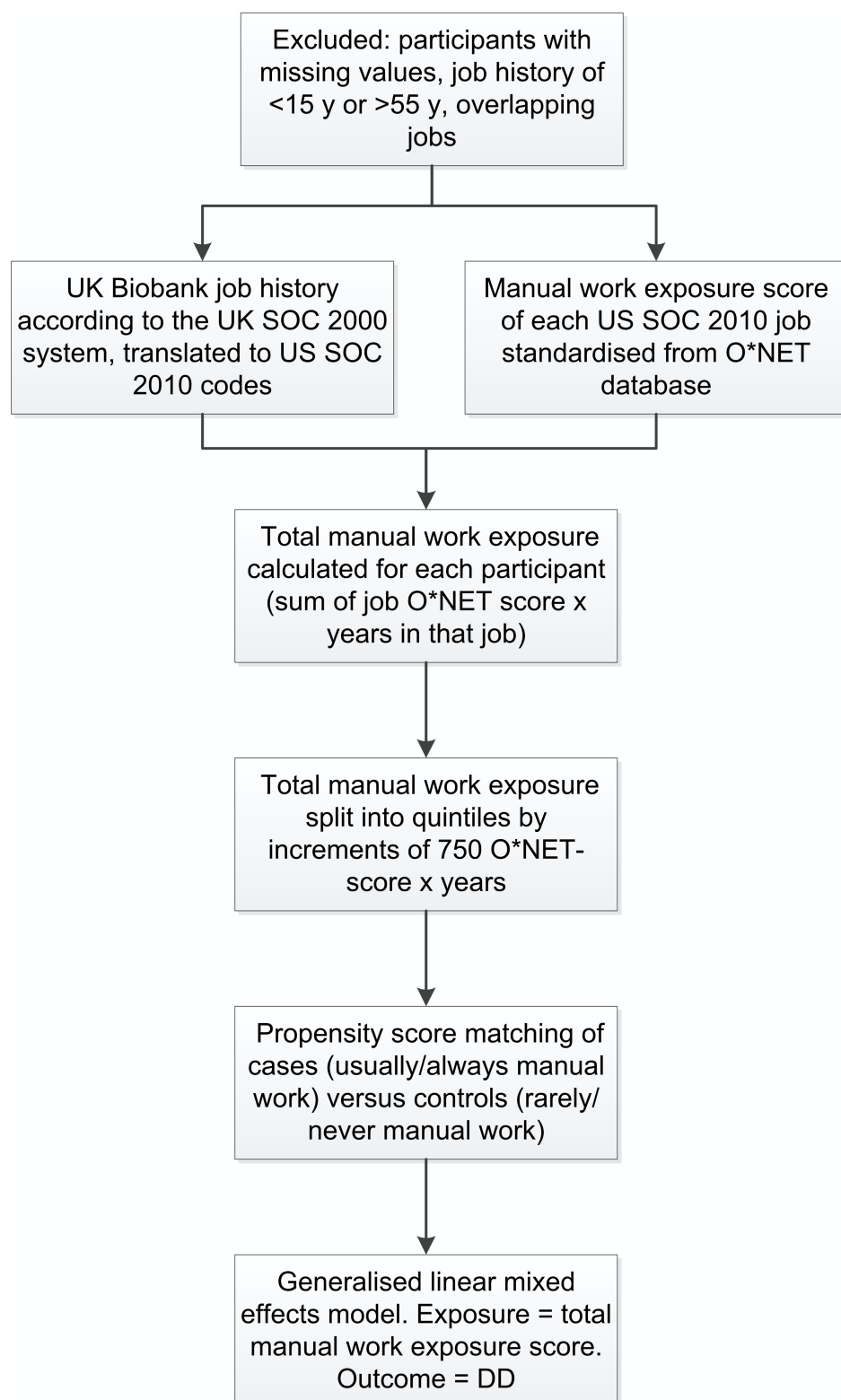
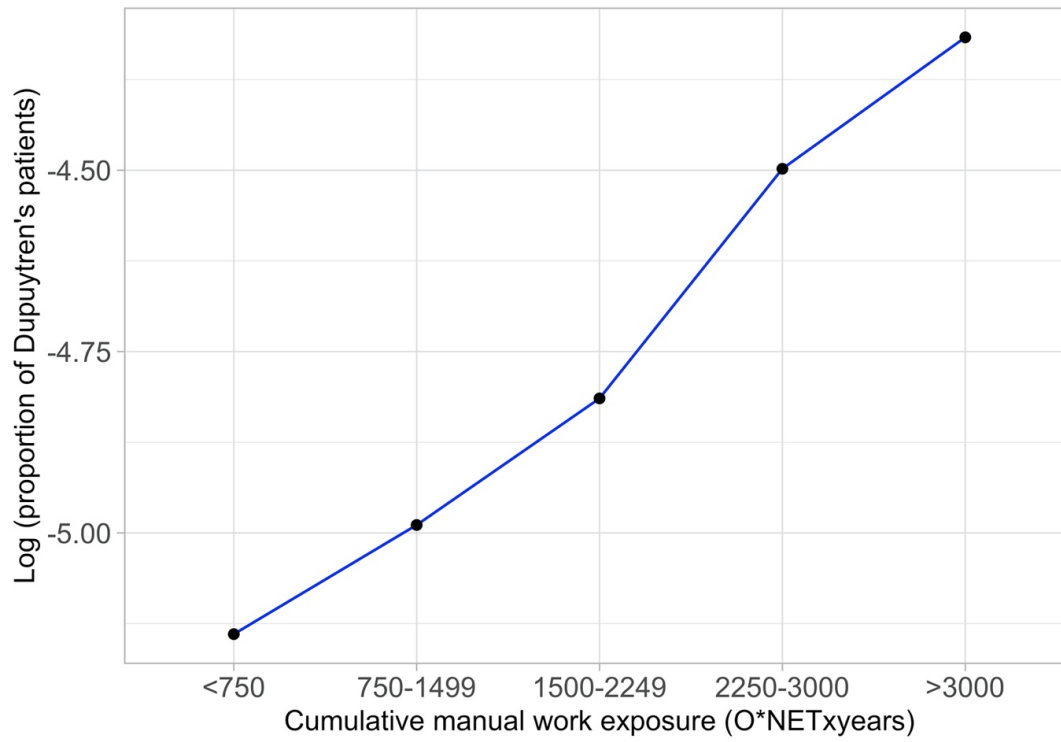
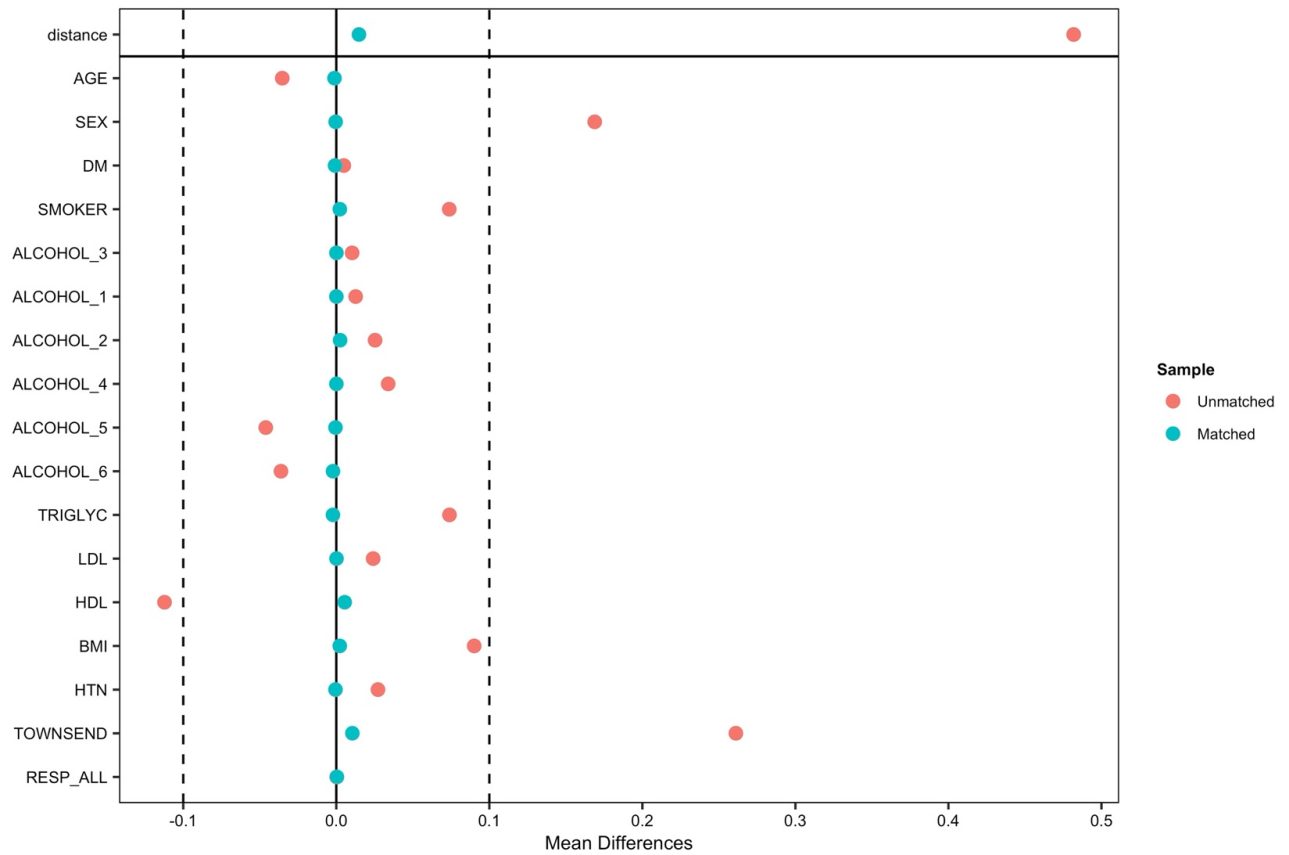


Supplementary figure 1: Flowchart of the steps involved in the dose-response analysis

Supplementary Figure 2: the relationship between Dupuytren's disease and manual work exposure

Supplementary figure 3a: Covariate balance before and after matching (current manual work response analysis)

Supplementary figure 3b: Covariate balance before and after matching (dose-response analysis)

