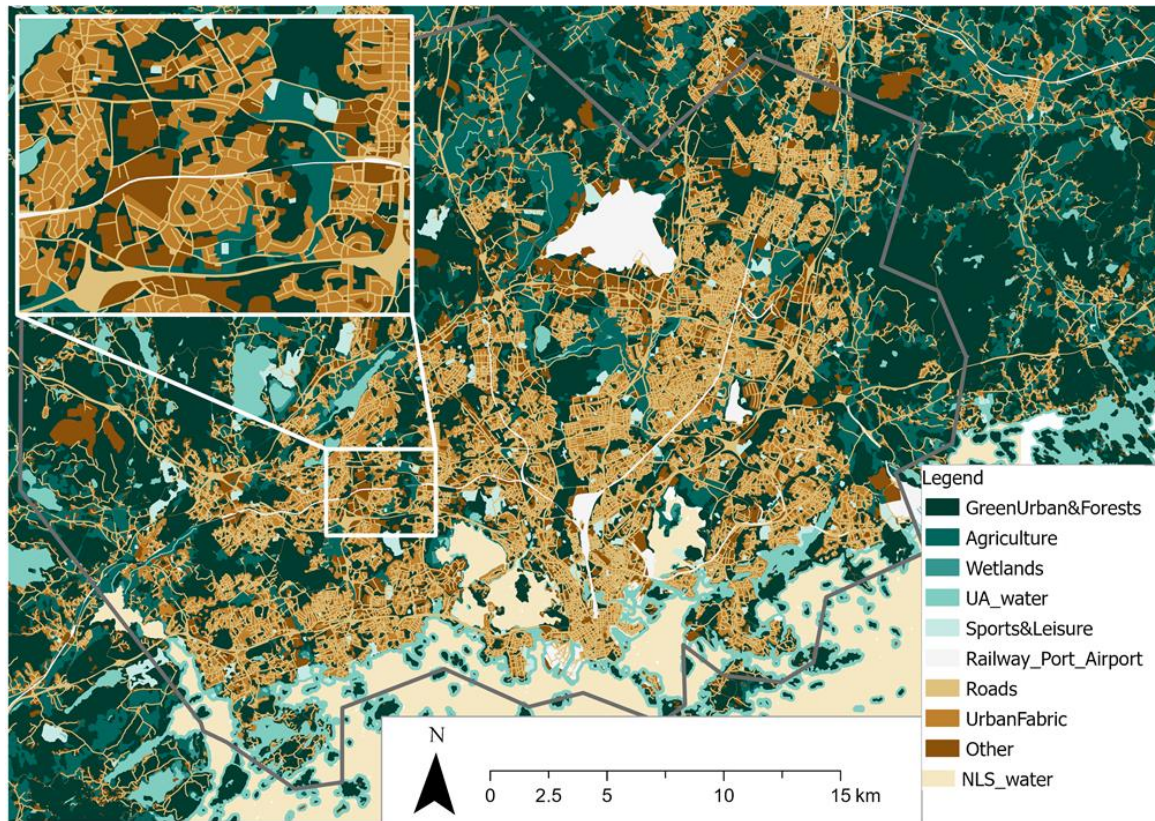
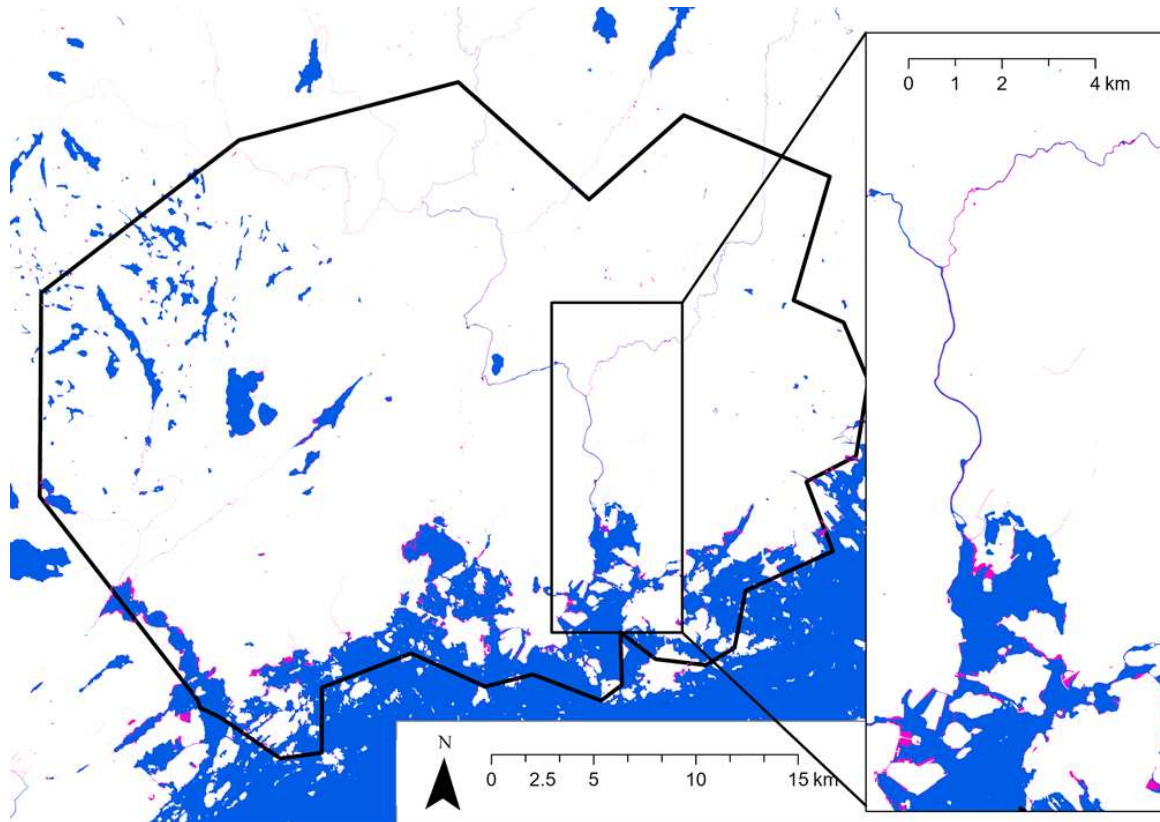


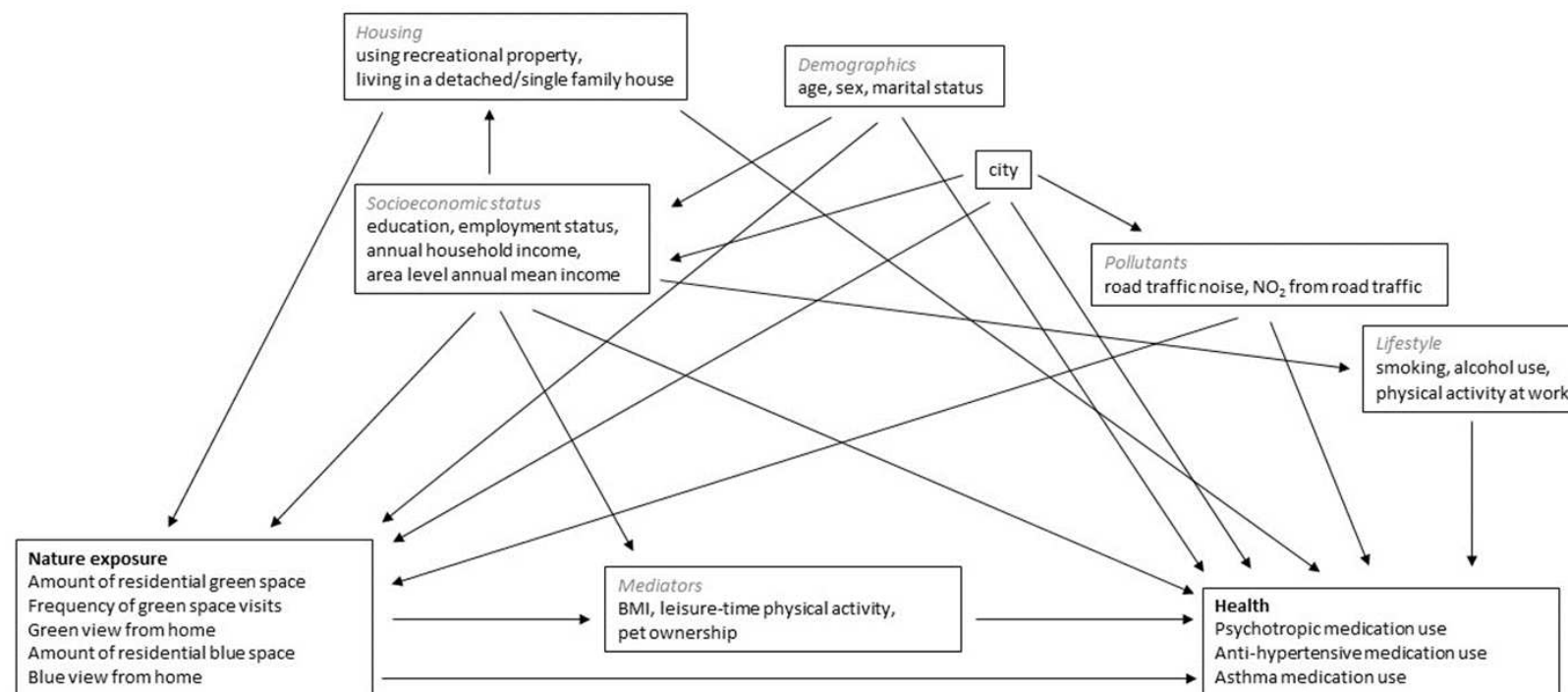
Supplemental material



Supplemental Figure S1. Area covering the 1 km buffers for all questionnaire respondents (address available for $n=7,316$) on top of a modified Urban Atlas map. Contains data from the Urban Atlas 2012 (European Union, Copernicus Land Monitoring Service 2012, European Environment Agency (EEA)) and the National Land Survey of Finland Topographic Database 12/2015 (water areas that are not included in the Urban Atlas 2012).



Supplemental Figure S2. Comparison between the calculated water class and water from the topographic database (11/2018) of National Land Survey of Finland in the area covering the 1 km buffers around the homes (black line). Pink areas are classified in other classes than water in the Urban Atlas 2012. Visual inspection of satellite images reveals that most of these areas are not open water, but wetlands. Contains data from the Urban Atlas 2012 (European Union, Copernicus Land Monitoring Service 2012, European Environment Agency (EEA)) and the National Land Survey of Finland Topographic Database 12/2015.



Supplemental Figure S3. Simplified directed acyclic graph for the association between nature exposure and medication use. Some variables have been grouped for readability. All potential associations between covariates have not been marked.

Supplemental Table S1. Pearson correlation coefficients between continuous exposures and SES indicators ($n=5,987$).

	Amount of residential green space	Amount of residential blue space	Traffic noise	NO ₂ from road traffic	Area level annual mean income
Amount of residential blue space	-0.31	1			
Road traffic noise	-0.12	-0.16	1		
NO ₂ from road traffic	-0.26	-0.10	0.49	1	
Area level annual mean income	-0.08	0.37	-0.05	-0.08	1
Area level unemployment rate	-0.07	-0.17	-0.03	0.01	-0.72

Supplemental Table S2. Continuous exposures, SES indicators, and BMI by the categories of green space visits ($n=5,886$).

	Frequency of green space visits							
	Never or less than once per week, $n=1,014$		1–2 times/week, $n=1,917$		3–4 times/week, $n=1,712$		≥5 times/week, $n=1,243$	
	Mean	SD	Mean	SD	Mean	SD	Mean	SD
Amount of residential green space, % ^a	24	12	25	11	25	11	26	11
Amount of residential blue space, % ^a	4.4	9.9	4.6	10	4.6	9.8	4.7	10
Road traffic noise, dB ^b	58	16	58	15	58	14	57	14
NO ₂ from road traffic, µg/m ³	7.4	4.5	7.3	4.3	7.3	4.4	7.0	4.1
Area level annual mean income, 1,000 €	27	6.1	27	5.6	28	6.1	28	6.5
Area level unemployment rate, %	6.1	1.7	6.0	1.6	5.9	1.6	5.8	1.6
Body mass index	27	5.7	26	4.4	25	4.0	25	4.0

^a Within a 1 km radius around the respondent's home^b Average sound pressure in decibels

Supplemental Table S3. Continuous exposures and SES indicators by the categories of green view from home ($n=5,939$).

	Green view from home					
	No, $n=1,397$		Yes, I look at it seldom or occasionally, $n=1,800$		Yes, I look at it often, $n=2,742$	
	Mean	SD	Mean	SD	Mean	SD
Amount of residential green space, % ^a	22	11	25	11	26	11
Amount of residential blue space, % ^a	4.4	9.4	4.6	10	4.6	9.8
Road traffic noise, dB ^b	59	15	57	14	57	14
NO ₂ from road traffic, $\mu\text{g}/\text{m}^3$	8.3	4.8	7.4	4.3	6.7	4.0
Area level annual mean income, 1,000 €	28	6.1	27	5.5	28	6.2
Area level unemployment rate, %	6.0	1.6	6.1	1.6	5.9	1.6

^a Within a 1 km radius around the respondent's home^b Average sound pressure in decibelsSupplemental Table S4. Continuous exposures and SES indicators by education ($n=5,987$).

	Education							
	Comprehensive school, $n=803$		Vocational or high school, $n=1,378$		College or university of applied sciences, $n=1,926$		University, $n=1,880$	
	Mean	SD	Mean	SD	Mean	SD	Mean	SD
Amount of residential green space, % ^a	26	10	25	11	26	12	23	11
Amount of residential blue space, % ^a	3.2	7.7	4.0	9.3	3.9	9.0	6.2	12
Road traffic noise, dB ^b	57	14	58	15	58	15	57	14
NO ₂ from road traffic, $\mu\text{g}/\text{m}^3$	6.8	4.0	7.0	4.2	7.2	4.3	7.8	4.5
Area level annual mean income, 1,000 €	26	4.7	26	4.9	27	5.6	29	7.1
Area level unemployment rate, %	6.4	1.6	6.2	1.6	6.0	1.6	5.6	1.5

^a Within a 1 km radius around the respondent's home^b Average sound pressure in decibels

Supplemental Table S5. Continuous exposures and SES indicators by annual household income (N=5,987).

	Annual household income							
	≤30 000 €, n=1,462		>30–50 000 €, n=1,527		>50–90 000 €, n=1,899		>90 000 €, n=1,099	
	Mean	SD	Mean	SD	Mean	SD	Mean	SD
Amount of residential green space, % ^a	25	11	25	11	25	12	25	12
Amount of residential blue space, % ^a	3.8	8.3	4.1	9.2	4.3	9.5	6.5	13
Road traffic noise, dB ^b	58	15	57	14	58	14	56	14
NO ₂ from road traffic, µg/m ³	7.9	4.6	7.3	4.2	7.3	4.3	6.5	4.0
Area level annual mean income, 1,000 €	26	5.2	27	5.2	28	5.9	30	7.2
Area level unemployment rate, %	6.4	1.6	6.2	1.6	5.8	1.6	5.3	1.4

^a Within a 1 km radius around the respondent's home

^b Average sound pressure in decibels

Supplemental Table S6. Categorical exposures and SES indicators and free-time physical activity by the categories of green space visits.

	Frequency of green space visits							
	Never or less than once per week		1–2 times/week		3–4 times/week		≥5 times/week	
	<i>n</i>	%	<i>n</i>	%	<i>n</i>	%	<i>n</i>	%
Green view from home, <i>n</i>=5,844								
No	311	31	473	25	373	22	228	18
Yes, I look at it seldom or occasionally	359	36	628	33	470	28	311	25
Yes, I look at it often	338	34	795	42	858	50	700	57
<i>Total</i>	<i>1,008</i>	<i>100</i>	<i>1,896</i>	<i>100</i>	<i>1,701</i>	<i>100</i>	<i>1,239</i>	<i>100</i>
Education, <i>n</i>=5,886								
Comprehensive school	187	18	227	12	198	11	157	13
Vocational or high school	268	27	444	23	354	21	284	23
College or university of applied sciences	301	30	618	32	564	33	421	34
University	258	25	628	33	596	35	381	30
<i>Total</i>	<i>1,014</i>	<i>100</i>	<i>1,917</i>	<i>100</i>	<i>1,712</i>	<i>100</i>	<i>1,243</i>	<i>100</i>
Annual household income, <i>n</i>=5,886								
≤30 000 €	300	29	433	23	375	22	306	24
>30–50 000 €	260	26	490	26	450	26	294	24
>50–90 000 €	293	29	623	32	544	32	423	34
>90 000 €	161	16	371	19	343	20	220	18
<i>Total</i>	<i>1,014</i>	<i>100</i>	<i>1,917</i>	<i>100</i>	<i>1,712</i>	<i>100</i>	<i>1,243</i>	<i>100</i>
Leisure-time physical activity, <i>n</i>=5,860								
Never or less than once per week	497	49	338	18	147	9	136	11
1–2 times per week	259	26	920	48	460	27	293	24
≥3 times per week	249	25	648	34	1102	64	811	65
<i>Total</i>	<i>1,005</i>	<i>100</i>	<i>1,906</i>	<i>100</i>	<i>1,709</i>	<i>100</i>	<i>1,240</i>	<i>100</i>

Supplemental Table S7. Categorical SES variables by the categories of green view from home.

	Green view from home					
	No		Yes, I look at it seldom or occasionally		Yes, I look at it often	
	<i>n</i>	%	<i>n</i>	%	<i>n</i>	%
Education, <i>n</i>=5,939						
Comprehensive school	147	11	236	13	408	15
Vocational or high school	330	23	439	24	594	22
College or university of applied sciences	460	33	579	32	876	32
University	460	33	546	31	864	31
<i>Total</i>	<i>1,397</i>	<i>100</i>	<i>1,800</i>	<i>100</i>	<i>2,742</i>	<i>100</i>
Annual household income, <i>n</i>=5,939						
≤30 000 €	368	26	400	22	671	25
>30–50 000 €	355	26	477	27	687	25
>50–90 000 €	436	31	593	33	857	31
>90 000 €	238	17	330	18	527	19
<i>Total</i>	<i>1,397</i>	<i>100</i>	<i>1,800</i>	<i>100</i>	<i>2,742</i>	<i>100</i>

Supplemental Table S8. Stratified analysis by SES indicators (performed when the *P*-value for the interaction term was <0.1).

	Model 3 ^a		Model 3 ^a		Model 3 ^a	
	OR	95% CI	OR	95% CI	OR	95% CI
PSYCHOTROPIC MEDICATION USE						
	Annual household income, ≤30,000 € <i>n</i> =1,414		Annual household income, >30–90,000 € <i>n</i> =3,377		Annual household income, >90,000 € <i>n</i> =1,095	
Frequency of green space visits						
Never/less than once per week	ref	ref	ref		ref	ref
1–2 times/week	0.70	0.50–0.97	0.73	0.56–0.96	1.51	0.89–2.56
3–4 times/week	0.52	0.36–0.73	0.72	0.55–0.95	1.00	0.57–1.74
≥5 times/week	0.60	0.41–0.87	0.85	0.63–1.13	1.18	0.64–1.15
	Comprehensive/vocational/high school <i>n</i> =2,181		College/polytechnic <i>n</i> =1,926		Academic training <i>n</i> =1,880	
Amount of residential blue space^b						
0%	ref	ref	ref		ref	ref
>0–10%	1.33	1.05–1.68	0.79	0.60–1.03	1.26	0.95–1.67
>10%	1.06	0.76–1.49	1.01	0.70–1.46	1.07	0.77–1.50
	Area level unemployment rate, 1 st tertile <i>n</i> =2,054		Area level unemployment rate, 2 nd tertile <i>n</i> =1,902		Area level unemployment rate, 3 rd tertile <i>n</i> =2,031	
Amount of residential of blue space^b						
0%	ref	ref	ref		ref	ref
>0–10%	1.03	0.79–1.36	1.12	0.86–1.46	1.11	0.87–1.42
>10%	1.28	0.96–1.71	1.04	0.70–1.54	0.69	0.47–1.02
ANTIHYPERTENSIVE MEDICATION USE						
	Area level annual mean income, 1 st tertile <i>n</i> =1,940		Area level annual mean income, 2 nd tertile <i>n</i> =2,049		Area level annual mean income, 3 rd tertile <i>n</i> =1,993	
Green view from home						
No	ref	ref	ref		ref	ref
Yes, I look at it seldom/occasionally	1.47	1.05–2.09	1.22	0.88–1.68	0.72	0.50–1.02
Yes, I look at it often	1.08	0.78–1.50	0.96	0.71–1.30	0.88	0.64–1.20

	Area level unemployment rate, 1 st tertile <i>n</i> =2,052		Area level unemployment rate, 2 nd tertile <i>n</i> =1,902		Area level unemployment rate, 3 rd tertile <i>n</i> =2,028	
Green view from home						
No	ref	ref	ref	ref	ref	ref
Yes, I look at it seldom/occasionally	0.77	0.54–1.10	1.15	0.81–1.62	1.37	0.99–1.89
Yes, I look at it often	0.87	0.64–1.19	1.03	0.75–1.43	0.96	0.71–1.30
	Area level annual mean income, 1 st tertile <i>n</i> =1,959		Area level annual mean income, 2 nd tertile <i>n</i> =2,064		Area level annual mean income, 3 rd tertile <i>n</i> =2,008	
Amount of residential green space^b	1.01	1.00–1.02	0.99	0.98–1.00	1.00	0.99–1.01
ASTHMA MEDICATION USE						
	Area level unemployment rate, 1 st tertile <i>n</i> =2,056		Area level unemployment rate, 2 nd tertile <i>n</i> =1,896		Area level unemployment rate, 3 rd tertile <i>n</i> =2,031	
Amount of residential blue space						
0%	ref	ref	ref		ref	ref
>0–10%	0.77	0.54–1.10	1.55	1.13–2.11	0.88	0.66–1.19
>10%	0.89	0.61–1.30	1.17	0.73–1.89	0.89	0.58–1.38

^a Model 3 (main) adjusted for age, sex, marital status, education, employment status, annual household income, smoking, alcohol use, physical activity at work, using recreational property during warm season, area level annual mean income, road traffic noise, and NO₂ from car traffic.

^b Within a 1 km radius around the respondent's home

Supplemental Table S9. The effect of BMI and leisure-time physical activity to the observed associations.

	Model 3 ^a		Model 3 ^a + BMI		Model 3 ^a + leisure-time physical activity	
	OR	95% CI	OR	95% CI	OR	95% CI
PSYCHOTROPIC MEDICATION USE						
Frequency of green space visits		<i>n</i> =5,886		<i>n</i> =5,800		<i>n</i> =5,860
Never/less than once per week	ref	ref	ref	ref	ref	ref
1–2 times/week	0.80	0.66–0.97	0.81	0.66–0.98	0.84	0.69–1.03
3–4 times/week	0.67	0.55–0.82	0.70	0.57–0.85	0.71	0.57–0.87
≥5 times/week	0.78	0.63–0.96	0.80	0.65–0.99	0.81	0.65–1.01
ANTIHYPERTENSIVE MEDICATION USE						
Frequency of green space visits		<i>n</i> =5,928		<i>n</i> =5,840		<i>n</i> =5,900
Never/less than once per week	ref	ref	ref	ref	ref	ref
1–2 times/week	0.84	0.69–1.02	0.98	0.80–1.21	0.84	0.69–1.03
3–4 times/week	0.64	0.52–0.78	0.82	0.67–1.02	0.70	0.57–0.87
≥5 times/week	0.59	0.48–0.74	0.80	0.64–1.01	0.65	0.52–0.82
ASTHMA MEDICATION USE						
Frequency of green space visits		<i>n</i> =5,983		<i>n</i> =5,796		<i>n</i> =5,857
Never/less than once per week	ref	ref	ref	ref	ref	ref
1–2 times/week	0.85	0.68–1.07	0.92	0.73–1.17	0.85	0.67–1.09
3–4 times/week	0.74	0.58–0.94	0.83	0.65–1.06	0.76	0.58–0.98
≥5 times/week	0.76	0.59–0.99	0.88	0.67–1.15	0.78	0.59–1.03

^a Model 3 (main) adjusted for age, sex, marital status, education, employment status, annual household income, smoking, alcohol use, physical activity at work, using recreational property during warm season, area level annual mean income, road traffic noise, and NO₂ from road traffic.