



OPEN ACCESS

Original research

Contact patterns of UK home delivery drivers and their use of protective measures during the COVID-19 pandemic: a cross-sectional study

Jessica R E Bridgen ,¹ Hua Wei ,² Carl Whitfield,³ Yang Han,⁴ Ian Hall,⁴ Chris P Jewell,⁵ Martie J A van Tongeren ,⁶ Jonathan M Read ¹

► Additional supplemental material is published online only. To view, please visit the journal online (<http://dx.doi.org/10.1136/oemed-2022-108646>).

¹Centre for Health Informatics, Computing and Statistics, Lancaster Medical School, Lancaster University, Lancaster, UK

²School of Health Sciences, University of Manchester, Manchester, UK

³Immunity and Respiratory Medicine, University of Manchester, Manchester, UK

⁴Department of Mathematics, University of Manchester, Manchester, UK

⁵Department of Mathematics and Statistics, Lancaster University, Lancaster, UK

⁶Academic Health Sciences Centre, University of Manchester, Manchester, UK

Correspondence to

Dr Jonathan M Read, Computing and Statistics, Lancaster University, Lancaster LA1 4YW, UK; jonathan.read@lancaster.ac.uk

Received 9 September 2022

Accepted 30 March 2023

Published Online First

13 April 2023

ABSTRACT

Objectives To quantify contact patterns of UK home delivery drivers and identify protective measures adopted during the pandemic.

Methods We conducted a cross-sectional online survey to measure the interactions of 170 UK delivery drivers during a working shift between 7 December 2020 and 31 March 2021.

Results Delivery drivers had a mean number of 71.6 (95% CI 61.0 to 84.1) customer contacts per shift and 15.0 (95% CI 11.2 to 19.2) depot contacts per shift. Maintaining physical distancing with customers was more common than at delivery depots. Prolonged contact (more than 5 min) with customers was reported by 5.4% of drivers on their last shift. We found 3.0% of drivers had tested positive for SARS-CoV-2 since the start of the pandemic and 16.8% of drivers had self-isolated due to a suspected or confirmed case of COVID-19. In addition, 5.3% (95% CI 2.3% to 10.2%) of participants reported having worked while ill with COVID-19 symptoms, or with a member of their household having a suspected or confirmed case of COVID-19.

Conclusion Delivery drivers had a large number of face-to-face customer and depot contacts per shift compared with other working adults during this time. However, transmission risk may be curtailed as contact with customers was of short duration. Most drivers were unable to maintain physical distance with customers and at depots at all times. Usage of protective items such as face masks and hand sanitiser was widespread.

INTRODUCTION

The delivery sector has been central in ensuring that services and supplies have remained available throughout the COVID-19 pandemic in the UK. There has been an unprecedented demand for home deliveries during the pandemic, rising sharply with the implementation of nationwide 'stay at home' orders.¹ The UK government classed delivery drivers as key workers, defined as workers critical to the COVID-19 response.² Shielding guidance for clinically extremely vulnerable individuals in January 2021 advised the use of food and prescription delivery services to minimise the need to leave home.³ As non-essential businesses were forced to close for extended periods of time in 2020 and 2021, many businesses relied on online sales to generate income.⁴

WHAT IS ALREADY KNOWN ON THIS TOPIC

- ⇒ Contact patterns are thought to drive occupational variation in risk of SARS-CoV-2 infection and workplace outbreaks.
- ⇒ The home delivery sector performed an important service to clinically vulnerable individuals shielding at home, however, the type and number of interactions made by delivery drivers has not been quantified.

WHAT THIS STUDY ADDS

- ⇒ Delivery drivers made a larger than average number of contacts per shift, when compared with the general workforce at this time, though contact with customers was of short duration.
- ⇒ Some drivers reported working while they or a household member were ill with or suspected of having COVID-19 for financial reasons.

HOW THIS STUDY MIGHT AFFECT RESEARCH, PRACTICE OR POLICY

- ⇒ Paid sick leave for delivery drivers may help to improve adherence to self-isolation and reduce SARS-CoV-2 infection risk to the workforce and customers.

Transmission of SARS-CoV-2, the virus that causes COVID-19, primarily occurs through airborne routes, however, indirect transmission may occur through contaminated surfaces.^{5 6} High contact occupations are thought to be associated with an increased likelihood of employees being exposed to SARS-CoV-2 and developing clusters of cases in the workplace.^{7 8} Reducing the number of social contacts, increasing ventilation and frequent hand-washing were advised methods to reduce workplace risk of exposure to SARS-CoV-2.⁹ Delivery drivers interact regularly with other employees at depots (or collection hubs) and with a large number of customers. To mitigate against infection, contact-free deliveries became widely available to minimise contact and reduce transmission risk between delivery drivers and customers.¹⁰

The study period, 7 December 2020 to 31 March 2021, coincides with the peak and gradual decline of the second wave of COVID-19 in the UK, following the emergence of the alpha variant.^{11 12} The UK also entered a period of lockdown during



© Author(s) (or their employer(s)) 2023. Re-use permitted under CC BY. Published by BMJ.

To cite: Bridgen JRE, Wei H, Whitfield C, et al. *Occup Environ Med* 2023;**80**:333–338.

this time, where 'stay at home' orders were in place, and non-essential businesses were closed to reduce transmission.¹³ We aimed to quantify the contact patterns of delivery drivers within their depot and with their customers, identifying the types of contact they were making.

METHODS

Survey methodology

We conducted a cross-sectional online survey between 7 December 2020 and 31 March 2021 to quantify behaviours thought to be associated with transmission risk of SARS-CoV-2. An anonymous online survey (the 'CoCoNet: Home Delivery Driver survey') was used for data collection. The survey design was adapted from a previous population-wide study.¹⁴ Study participants had to meet the following inclusion criteria: a resident in the UK at the time of the survey, working as a home delivery driver and aged 18 or over. The survey was promoted through university press releases, engagement with delivery driver groups on social media (LinkedIn and Facebook) and targeted Facebook advertisements.

Survey responses received between 7 December 2020 and 31 March 2021 were included in the analysis. Partial survey responses were analysed for all questions that had been displayed to the participant.

Age, sex, ethnicity, household size and other demographic information was collected from participants. Employment information was requested, including employment type, working hours, types of items typically delivered and sick pay eligibility. The survey included questions pertaining directly to COVID-19, such as whether participants had tested positive for SARS-CoV-2, if they had to self-isolate due to suspected or confirmed SARS-CoV-2 infection and if they had worked while being ill with COVID-19 symptoms. Participants were asked to recall specific details from their last shift working as a delivery driver, including the number of customers they met face to face, the number of individuals they had a face-to-face conversation with at their depot and their use of personal protective equipment (PPE). The survey questions can be found in online supplemental material and the dataset is publicly available.¹⁵

Primary and secondary outcome measurements

Our primary outcome measurement was the number of contacts delivery drivers have per shift. This was stratified into contact with customers and contact with individuals (employees or customers) at a delivery depot. A contact was defined as someone whom the participant had a face-to-face conversation with. Secondary outcome measurements were: the number of deliveries per shift, the type of contact drivers were having with customers, ability to maintain physical distance, use of protective items, COVID-19-related presenteeism, the frequency of self-isolation and COVID-19 infection.

Data analysis

Study representativeness was assessed by comparing participant demographics with the labour force survey (LFS) estimates for delivery drivers and couriers. Quarterly LFSs for the time period November 2020 to January 2022 were aggregated for comparison, due to the relatively small sample size of delivery drivers and couriers included in each individual survey.^{16–21} To assess representativeness, we compared the percentage distribution of each demographic variable from the LFS to the binomial CIs of our sample.

Table 1 Participant demographics and aggregated labour force survey estimates for 'delivery drivers and couriers'

	No of participants (percentage, 95% binomial CI)	Aggregated Quarterly labour force survey estimates for delivery drivers and couriers* ^{16–21} November 2020– January 2022 No of participants (percentage)
Age group	N=170†	N=1785
<18	–‡	5 (0.3%)
18–29	27 (15.9%, 10.74% to 22.26%)	230 (12.9%)
30–39	35 (20.6%, 14.78% to 27.45%)	245 (13.7%)
40–49	46 (27.1%, 20.54% to 34.39%)	338 (18.9%)
50–59	50 (29.4%, 22.68% to 36.87%)	530 (29.7%)
60–69	12 (7.1%, 3.70% to 12.01%)	384 (21.5%)
70+	0 (0.0%, 0.00% to 2.15%)	53 (3.0%)
Sex	N=170†	N=1785
Female	40 (23.5%, 17.37% to 30.63%)	181 (10.1%)
Male	128 (75.3%, 68.11% to 81.58%)	1604 (89.9%)
Prefer not to say	2 (1.2%, 0.14% to 4.19%)	–
Ethnicity	N=170	N=1785
White	156 (91.8%, 86.57% to 95.42%)	1648 (92.3%)
Mixed/multiple ethnic groups	5 (2.9%, 0.96% to 6.73%)	9 (0.5%)
Asian/Asian British	5 (2.9%, 0.96% to 6.73%)	88 (4.9%)
Black/African/Caribbean/Black British	1 (0.6%, 0.01% to 3.23%)	26 (1.5%)
Other ethnic groups	0 (0.0%, 0.00% to 2.15%)	14 (0.8%)
Prefer not to say	3 (1.8%, 0.37% to 5.07%)	–
No response	0.00 (0%, 0.00% to 2.15%)	0 (0.0%)
Nation	N=170†	N=1785
England	139 (81.8%, 75.13% to 87.26%)	1491 (83.5%)
Northern Ireland	3 (1.8%, 0.37% to 5.07%)	79 (4.4%)
Scotland	18 (10.6%, 6.40% to 16.22%)	114 (6.4%)
Wales	10 (5.9%, 2.86% to 10.55%)	101 (5.7%)

N is the number of participants who provided a response to the question.
*Main occupation of participant recorded as 'delivery drivers and couriers'.
†Question required a response from the participant.
‡Age group did not meet study inclusion criteria.

To identify occupational and personal characteristics associated with participants' interactions with customers, we fitted a negative binomial regression model to the number of customer contacts per shift. Explanatory variables included in the model were: age, sex, employment type, furthest distance travelled from the collection point to a delivery, weekly working hours and the type of items delivered. The model was assessed for multicollinearity by calculating the variance inflation factor for each independent variable. Statistical analyses were conducted by using R V.4.0.2.

RESULTS

Participant demographics

We received 170 survey responses between 9 December 2020 and 31 March 2021, which met our inclusion criteria. Male participants accounted for 75.3% (128/170) of the sample, our survey over sampled females when compared with the aggregated LFS (table 1). The majority of participants were aged 40–59 (56.5%, 96/170). Participants predominantly resided in England (81.8%, 139/170), with 1.8% (3/170) of participants residing in Northern Ireland, 10.6% (18/170) residing

in Scotland and 5.9% (10/170) residing in Wales. Our sample was representative by nation when compared with the LFS. The distribution of ethnicities in our sample is broadly reflective of the sector when compared with the LFS aggregated data. Most participants in our sample were white (91.8%, 156/170) which is comparable to the LFS (92.3%, 1648/1785), however we also have representation of other ethnicities (table 1).

Employment situation

The majority of participants reported their employment situation to be either self-employed and completely independent (54.3%, 95% CI 46.3% to 62.2%) or employed full time by one company (28.4%, 95% CI 21.6% to 36.0%) (see online supplemental table S1). Over half of delivery drivers (53.1%, 95% CI 45.1% to 61.0%) reported their weekly working hours to be between 31 and 50 hours, and 22.2% (95% CI 16.1% to 29.4%) of delivery drivers reported working more than 50 hours a week. The majority of participants reported their most recent working shift to be during the week of completing the survey (92.6%, 95% CI 87.4% to 96.1%). A small proportion of participants reported their most recent working shift to be more than a month before completing the survey (2.5%, 95% CI 0.7% to 6.2%). Most participants (68.2%, 95% CI 60.1% to 75.5%) reported that they did not receive statutory sick leave pay while working as delivery drivers.

Workplace interactions

The mean number of customer contacts was 71.6 (95% CI 61.0 to 84.1) per shift. We found 95.2% (95% CI 90.4% to 98.1%) of participants had brief face-to-face interactions (less than 5 min) with customers on their last shift, 5.4% (95% CI 2.4% to 10.4%) of participants had prolonged face-to-face interactions (more than 5 min) with customers and 8.2% (95% CI 4.3% to 13.8%) had entered a customer's property. We found that 61.9% (95% CI 53.5% to 69.8%) of participants were able to maintain physical distance with customers at all times during their last shift. A small proportion of participants (2.7%, 95% CI 0.7% to 6.8%) reported that they could not maintain physical distance at all on their last shift.

The mean number of contacts per shift in depot (where drivers collected items for delivery) was 27.9 (95% CI 12.2 to 55.8). This was reduced to 15.0 (95% CI 11.2 to 19.2) contacts per shift after excluding a single individual who reported making an

exceptionally large number of contacts. We found that 42.4% (95% CI 34.2% to 50.9%) of participants reported that they were able to maintain physical distance from contacts at the depot at all times during their last shift. Whereas 8.3% (95% CI 4.4% to 14.1%) of participants were unable to maintain physical distance at all on their previous shift.

We found 10.5% (95% CI 6.1% to 16.4%) of participants shared a vehicle with a colleague during their last working week, of which, 56.2% (95% CI 29.9% to 80.2%) reported sharing the vehicle with the same colleague throughout the week.

The number of contacts made per shift, including both customer and depot interactions, was positively correlated with the number of deliveries made per shift (figure 1A). Participants who reported typically delivering only large items (eg, large appliances, furniture) had the greatest number of customer and depot contacts per shift, making on average more customer contacts than deliveries per shift (figure 1B). While most drivers delivering large items only reported a one-to-one ratio of customer contacts and deliveries, one individual reported four times the number of customer contacts than deliveries.

Frequency and type of deliveries

We found that the mean number of deliveries per shift was 121.8 (95% CI 97.9 to 152.3). Approximately half of participants (51.0%, 95% CI 42.8% to 59.1%) reported that the furthest distance they travelled from a collection point to a delivery address during their last working week was under 20 miles. The majority of delivery drivers surveyed (52.5%, 95% CI 44.5% to 60.4%) reported that they typically delivered small parcels (including letters and mail). We found that drivers delivering small parcels and large items had the highest mean number of deliveries per shift, while takeaway and grocery delivery drivers had the lowest (figure 1B).

Predictors of customer contacts

A negative binomial model was fitted to the number of face-to-face customer interactions per shift. The variance inflation factor was less than five for all model coefficients indicating multicollinearity was not present. Participants aged 18–29 (adjusted incidence rate ratio (aIRR) 1.65, 95% CI 1.07 to 2.60) and aged 40–49 (aIRR 1.64, 95% CI 1.15 to 2.34) had a higher number of customer contacts per shift than those aged 50–59 (figure 2, online supplemental table S2). We found that delivery drivers

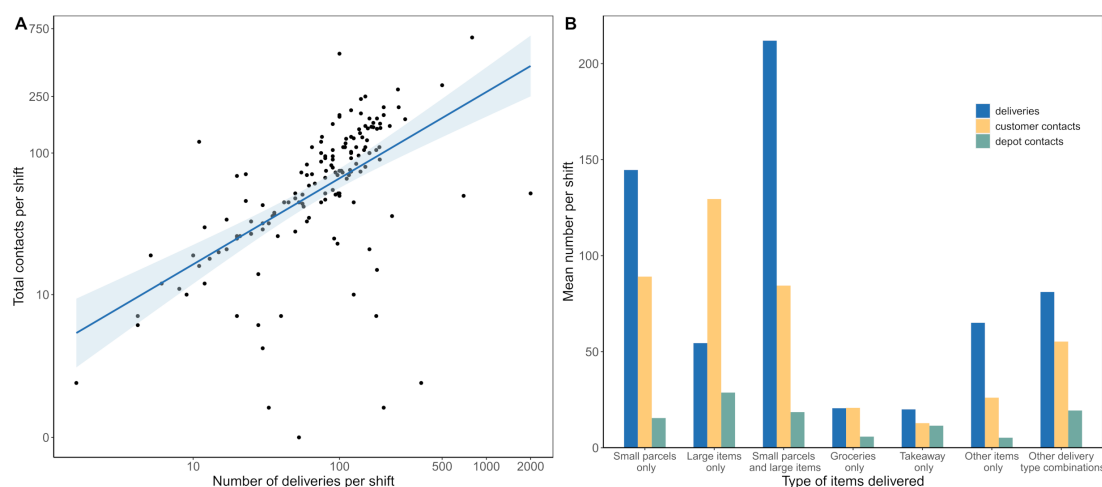


Figure 1 (A) Number of total contacts and deliveries made per shift. Note, x-axis and y-axis on \log_{10} -scale. Line and shaded area are a linear regression model. (B) Mean number of deliveries and contacts per shift by delivery type.

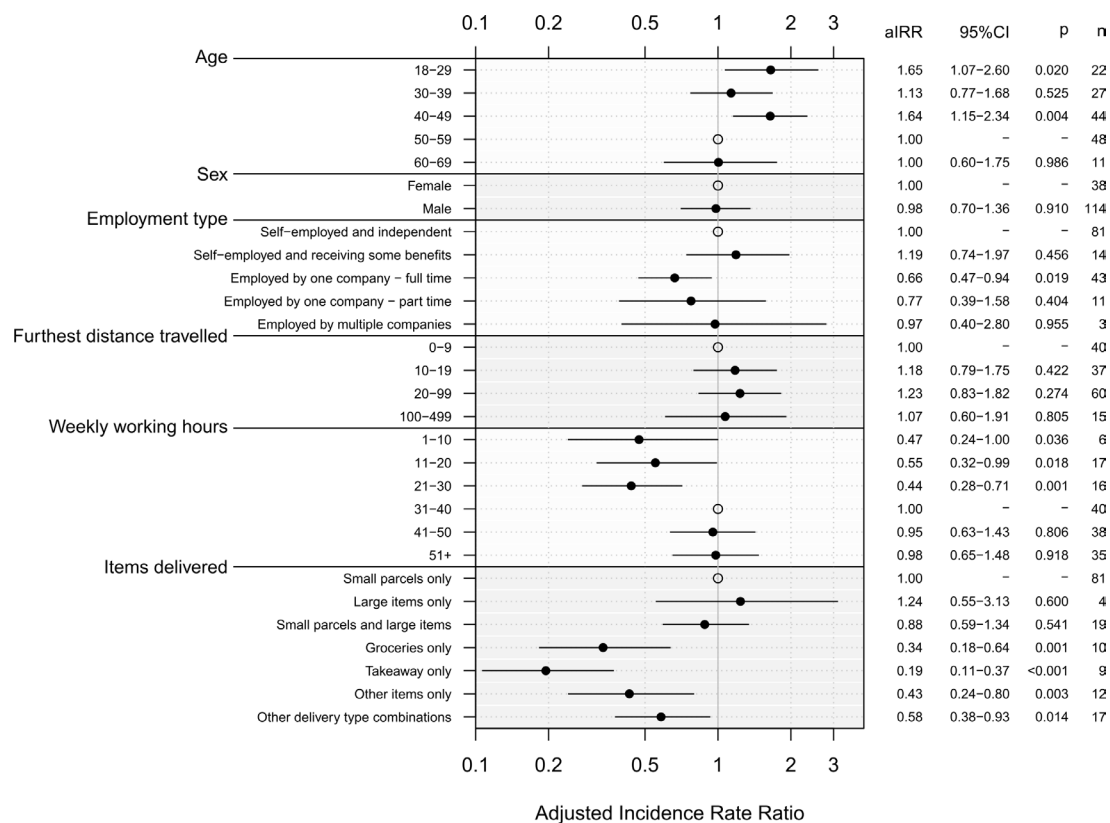


Figure 2 Adjusted incidence rate ratios (aIRR) for mean number of customer contacts reported for selected variables. Explanatory variables included in the model: age, sex, employment type, furthest distance travelled from the collection point to a delivery, weekly working hours and the type of items delivered. Open circles represent the reference group for each variable.

who were employed by one company full time had a lower number of customer contacts per shift than those self-employed and independent (aIRR 0.66, 95% CI 0.47 to 0.94). Participants who usually deliver only groceries (aIRR 0.34, 95% CI 0.18 to 0.64), deliver only takeaways (aIRR 0.19, 95% CI 0.11 to 0.37), deliver other unlisted items (aIRR 0.43, 95% CI 0.24 to 0.80) and those who deliver other combinations of items listed (aIRR 0.58, 95% CI 0.38 to 0.93) had fewer customer contacts than those that usually deliver only small parcels.

COVID-19 infection, self-isolation and presenteeism

We asked respondents about their COVID-19 infection status to date, as well as their behaviour following infection or potential exposure; we examined these aspects independently. We found that 3.0% (95% CI 1.0% to 6.9%) of delivery drivers surveyed reported that they had tested positive for COVID-19 since the start of the pandemic. In addition, 16.8% (95% CI 11.4% to 23.3%) of delivery drivers had self-isolated since the start of the pandemic due to a suspected or confirmed case of COVID-19. Approximately 1 in 20 drivers (5.3%, 95% CI 2.3% to 10.2%) reported that they have continued to work while either being ill with COVID-19 symptoms or with a member of their household having a suspected or confirmed case of COVID-19. In this situation, financial reasons were most often cited as a reason for continuing to work (85.7%, 95% CI 42.1% to 99.6%).

Protective measures

We found that 68.3% (95% CI 60.0% to 75.7%) of participants were provided with some PPE items by their employers or contracting companies. However, less than half of participants (48.3%, 95% CI 39.9% to 56.7%) felt that the PPE provided

effective protection. Face masks (82.4%, 95% CI 75.4% to 88.0%) and hand sanitiser (83.7%, 95% CI 76.8% to 89.1%) were the protective items most commonly used by delivery drivers on their last shift. Participants who shared a vehicle during their last working week most often reported using hand sanitiser to prevent infection when sharing a vehicle (81.2%, 95% CI 54.4% to 96.0%), with 50.0% (95% CI 24.7% to 75.3%) of participants reporting wearing a face mask and 50.0% (95% CI 24.7% to 75.3%) reporting keeping a window open.

DISCUSSION

We found that delivery drivers made a large number of contacts per shift both at their depot (15.0 per shift) and with customers (71.6 per shift). In comparison, Jarvis and Edmunds found that the mean number of contacts among the general population attending their workplace between January 2021 and March 2021 was between 3 and 10 contacts per day; this included contacts made outside of the workplace.²² This suggests delivery drivers have a very large number of contacts compared with the general workforce at this time, which may lead to a higher risk of SARS-CoV-2 infection. The importance of contact duration in respiratory virus transmission has been widely documented.²³⁻²⁷ Face-to-face interactions between delivery drivers and customers are likely to take place outside and to be very short in duration, with only 5.4% of drivers reporting any prolonged contact (more than 5 min) with customers during their last working shift. Therefore, while delivery drivers have a large number of contacts, this may pose only a small risk in terms of exposure and transmission of SARS-CoV-2. Similarly, sharing a vehicle with a colleague for deliveries may be a type of high-risk contact. Nevertheless, as we found most work-related vehicle sharing

was fixed-pairing (pair that share a vehicle is fixed) the risk of multiple transmission events is likely to be largely reduced. The duration of contacts made at the depot was not recorded.

The use of protective measures in the workplace was common. Most delivery drivers reported being able to maintain physical distance with customers and at the depot at least some of the time during their last shift, however, most drivers reported not being able to maintain distance at all times particularly when at the depot. Face masks and hand sanitiser were commonly used by drivers during their shift. While face masks offer varying levels of protection to the wearer they help to prevent transmission from an infected individual to others.²⁸ The majority of drivers received some protective items from their employers, however, less than half of drivers felt that they provided effective protection.

By 7 December 2020, there had been 1770619 confirmed cases of COVID-19 in the UK, accounting for approximately 2.6% of the UK population.^{11 29} We found 3.0% of delivery drivers surveyed had tested positive for SARS-CoV-2 since the start of the pandemic, slightly higher than the national estimate, and over a sixth of delivery drivers reported having to self-isolate due to a suspected or confirmed case of SARS-CoV-2. A small proportion of delivery drivers reported working with symptoms of COVID-19 or while a member of their household had a confirmed or suspected SARS-CoV-2 infection. The majority of drivers reported continuing to work in this situation due to financial reasons, this may be associated with statutory sick pay being unavailable for most drivers. Lack of access to paid sick leave is one of the main risk factors for respiratory infectious disease-related presenteeism.³⁰ Providing wider access to paid sick leave may, therefore, help to improve adherence to public health measures such as self-isolation. Delivery drivers were critical to the pandemic response, ensuring supplies were available and providing a service to clinically vulnerable individuals shielding at home, highlighting the importance of minimising exposure risk for workers and customers. Further consideration is needed on how key workers can be best supported and protected in future public health emergencies.

Participants self-reported how many face-to-face interactions they had with customers and at the depot on their last working shift as a delivery driver. For most participants, their last working shift was during the same week as completing the survey, but a small proportion (approximately 2.5%) were recalling from a shift over a month ago. There is some risk of uncertainty in recall particularly with the small proportion of participants recalling from a less recent shift. This study may suffer from recruitment bias, the survey was conducted online only without a strict recruitment process. Mean number of contacts were calculated per shift and therefore cannot be directly compared with other contact studies which calculate the number of contacts per hour or per day. Our definition of a contact is an adaptation of the definitions used by other social contact studies, rather than using a definition set by an international public health agency, such as WHO.^{14 25 31–33} To reduce participant burden when reporting a large number of contacts, we kept the definition of a contact relatively simple. One motivation of this study was to quantify behaviours thought to be associated with transmission risk of SARS-CoV-2 to inform modelling studies, we hence used a similar definition to other pandemic contact studies to allow for comparisons across studies.^{14 33}

Questions pertaining to SARS-CoV-2 infection and self-isolation referred to the time period from the start of the pandemic to completing the survey. Participants reported on their use of specific PPE items, however, we did not ask for any

further details such as type of face mask worn or duration of use. Vaccination status of participants was not collected due to the timing of the study, which was released 5 days after the initial roll-out of the COVID-19 vaccine in the UK. As the vaccine was only available to clinically vulnerable individuals at this time, it was unlikely to be offered to participants during the study period.³⁴ Delivery driver occupation was self-reported and not confirmed. However, this occupation was reported at the time of recruitment and before beginning the survey. We did not collect data on how long participants had been working as delivery drivers, therefore, estimations of the prevalence of SARS-CoV-2 infection and self-isolation among participants may not be an accurate representation of all delivery drivers.

Twitter Martie J A van Tongeren @martievt and Jonathan M Read @jonread15

Acknowledgements We would like to thank the participants of the study for their time and information.

Contributors JREB, HW, CW, YH, IH, CPJ, MJAVt and JMR all conceived and designed the study. JREB conducted the analysis and wrote the first draft of the manuscript. All authors edited the manuscript. JMR is guarantor of the article.

Funding HW, CW, YH, IH and MJAVt received funding from the UKRI COVID-19 Rapid Response call, Grant Ref: MC_PC_19083. JMR and CPJ were supported by UKRI through the JUNIPER modelling consortium, Grant Ref: MR/V038613/1. JREB is supported by a Lancaster University Faculty of Health and Medicine doctoral scholarship.

Competing interests None declared.

Patient consent for publication Not applicable.

Ethics approval This study involves human participants and was approved by Faculty of Health and Medicine Ethics Committee at Lancaster University, reference FHMREC20040. Participants gave informed consent to participate in the study before taking part.

Provenance and peer review Not commissioned; externally peer reviewed.

Data availability statement Data are available in a public, open access repository. The survey data are available from Lancaster University's research directory at: <https://doi.org/10.17635/lancaster/researchdata/553>. License: Creative Commons Attribution licence (CC BY). The code to reproduce the statistical analyses is available at: <https://doi.org/10.5281/zenodo.7517541>.

Supplemental material This content has been supplied by the author(s). It has not been vetted by BMJ Publishing Group Limited (BMJ) and may not have been peer-reviewed. Any opinions or recommendations discussed are solely those of the author(s) and are not endorsed by BMJ. BMJ disclaims all liability and responsibility arising from any reliance placed on the content. Where the content includes any translated material, BMJ does not warrant the accuracy and reliability of the translations (including but not limited to local regulations, clinical guidelines, terminology, drug names and drug dosages), and is not responsible for any error and/or omissions arising from translation and adaptation or otherwise.

Open access This is an open access article distributed in accordance with the Creative Commons Attribution 4.0 Unported (CC BY 4.0) license, which permits others to copy, redistribute, remix, transform and build upon this work for any purpose, provided the original work is properly cited, a link to the licence is given, and indication of whether changes were made. See: <https://creativecommons.org/licenses/by/4.0/>.

ORCID iDs

Jessica R E Bridgen <http://orcid.org/0000-0001-5497-2700>

Hua Wei <http://orcid.org/0000-0003-2617-7632>

Martie J A van Tongeren <http://orcid.org/0000-0002-1205-1898>

Jonathan M Read <http://orcid.org/0000-0002-9697-0962>

REFERENCES

- Office for National Statistics. Impact of the coronavirus (COVID-19) pandemic on retail sales in 2020. 2021. Available: <https://www.ons.gov.uk/economy/grossdomesticproductgdp/articles/impactofthecoronaviruscovid19pandemonretailsalesin2020/2021-01-28>
- GOV UK. Children of critical workers and vulnerable children who can access schools or educational settings. 2022. Available: <https://www.gov.uk/government/publications/coronavirus-covid-19-maintaining-educational-provision/guidance-for-schools-colleges-and-local-authorities-on-maintaining-educational-provision>
- Office for National Statistics. Coronavirus and clinically extremely vulnerable people in england. 2021. Available: <https://www.ons.gov.uk/peoplepopulationandcommunity/>

- healthandsocialcare/conditionsanddiseases/bulletins/coronavirusandclinicallyextremelyvulnerablepeopleinengland/11octoberto16october2021
- 4 Office for National Statistics. Coronavirus: how people and businesses have adapted to lockdowns. 2021. Available: <https://www.ons.gov.uk/economy/economicoutputandproductivity/output/articles/coronavirushowpeopleandbusinesseshaveadaptedtolockdowns/2021-03-19> [Accessed Jan 2022].
 - 5 World Health Organization. Transmission of SARS-cov-2: implications for infection prevention precautions. 2020. Available: <https://www.who.int/news-room/commentaries/detail/transmission-of-sars-cov-2-implications-for-infection-prevention-precautions>
 - 6 GOV UK. COVID-19: epidemiology, virology and clinical features. 2022. Available: <https://www.gov.uk/government/publications/wuhan-novel-coronavirus-background-information/wuhan-novel-coronavirus-epidemiology-virology-and-clinical-features>
 - 7 Office for National Statistics. Which occupations have the highest potential exposure to the coronavirus (COVID-19)? 2020. Available: <https://www.ons.gov.uk/employmentandlabourmarket/peopleinwork/employmentandemployeetypes/articles/whichoccupationshavethehighestpotentialexposuretothecoronaviruscovid19/2020-05-11>
 - 8 European Centre for Disease Prevention and Control. COVID-19 clusters and outbreaks in occupational settings in the EU/EEA and the UK. 2020. 2021. Available: <https://www.ecdc.europa.eu/en/publications-data/covid-19-clusters-and-outbreaks-occupational-settings-eueea-and-uk>
 - 9 Health and Safety Executive. Working safely during the coronavirus (COVID-19) pandemic. 2022. Available: <https://www.hse.gov.uk/coronavirus/working-safely/index.htm>
 - 10 Wei H, Daniels S, Whitfield CA, *et al.* Agility and sustainability: A qualitative evaluation of COVID-19 non-pharmaceutical interventions in the UK logistics sector. *Front Public Health* 2022;10:864506.
 - 11 Public Health England. Coronavirus(COVID-19) in the UK. 2020. Available: <https://coronavirus.data.gov.uk>
 - 12 Public Health England. Investigation of SARS-cov-2 variants of concern in england: technical briefing 6; 2021.
 - 13 GOV UK. Prime minister's address to the nation: 4january 2021. 2021. Available: <https://www.gov.uk/government/speeches/prime-ministers-address-to-the-nation-4-january-2021>
 - 14 Bridgen JR, Jewell C, Read JM. Social mixing patterns in the UK following the relaxation of COVID-19 pandemic restrictions, july-august 2020: a cross-sectional online survey. *BMJ Open* 2022;12:e059231.
 - 15 Bridgen JRE, Wei H, Whitfield C, *et al.* CoCoNet home delivery driver study data. 2022.
 - 16 Northern Ireland Statistics and Research Agency (NISRA), Office for National Statistics, Social Survey Division, UK Data Service. Quarterly labour force survey,november 2020-january, 2021. 2021.
 - 17 Office for National Statistics, Social Survey Division, Northern Ireland Statistics and Research Agency, Central Survey Unit, UK Data Service. Quarterly labour force survey, february -april 2021. 2021.
 - 18 Office for National Statistics, Northern Ireland Statistics and Research Agency, UK Data Service. Quarterly labour force survey, may - july 2021. 2021.
 - 19 Office for National Statistics, Northern Ireland Statistics and Research Agency,UK Data Service. Quarterly labour force survey, july - september 2021. 2021.
 - 20 Office for National Statistics, Northern Ireland Statistics and Research Agency,UK Data Service. November 2021.
 - 21 Northern Ireland Statistics and Research Agency (NISRA), Office for National Statistics, Social Survey Division, UK Data Service. Quarterly labour force survey, november, 2021 - january, 2022. 2022.
 - 22 Jarvis C, Edmunds J, CMMID COVID-19 Working Group. Social contacts in workplace the UK from the comix social contact survey. London School of Hygiene and Tropical Medicine; 2021. Available: <https://cmmid.github.io/topics/covid19/reports/comix/Comix%20Report%20contacts%20in%20the%20workplace.pdf>
 - 23 Read JM, Eames KTD, Edmunds WJ. Dynamic social networks and the implications for the spread of infectious disease. *J R Soc Interface* 2008;5:1001–7.
 - 24 Smieszek T. A mechanistic model of infection: why duration and intensity of contacts should be included in models of disease spread. *Theor Biol Med Model* 2009;6:25.
 - 25 Danon L, Read JM, House TA, *et al.* Social encounter networks: characterizing great britain. *Proc Biol Sci* 2013;280:20131037.
 - 26 Thompson HA, Mousa A, Dighe A, *et al.* Severe acute respiratory syndrome coronavirus 2 (SARS-cov-2) setting-specific transmission rates: a systematic review and meta-analysis. *Clin Infect Dis* 2021;73:e754–64.
 - 27 De Cao E, Zagheni E, Manfredi P, *et al.* The relative importance of frequency of contacts and duration of exposure for the spread of directly transmitted infections. *Biostatistics* 2014;15:470–83.
 - 28 Centers for Disease Control and Prevention. Masks and respirators. 2022. Available: <https://www.cdc.gov/coronavirus/2019-ncov/prevent-getting-sick/types-of-masks.html>
 - 29 Office for National Statistics. Population estimates. 2021. Available: <https://www.ons.gov.uk/peoplepopulationandcommunity/populationandmigration/populationestimates>
 - 30 Daniels S, Wei H, Han Y, *et al.* Risk factors associated with respiratory infectious disease-related presenteeism: a rapid review. *BMC Public Health* 2021;21:1955.
 - 31 Mossong J, Hens N, Jit M, *et al.* Social contacts and mixing patterns relevant to the spread of infectious diseases. *PLoS Med* 2008;5:e74.
 - 32 Klepac P, Kucharski AJ, Conlan AJ, *et al.* Contacts in context: large-scale setting-specific social mixing matrices from the BBC pandemic project. *Epidemiology* [Preprint] 2020.
 - 33 Jarvis CI, Van Zandvoort K, Gimma A, *et al.* Quantifying the impact of physical distance measures on the transmission of COVID-19 in the UK. *BMC Med* 2020;18:124.
 - 34 GOV UK. UK COVID-19 vaccines delivery plan. 2021. Available: <https://www.gov.uk/government/publications/uk-covid-19-vaccines-delivery-plan/uk-covid-19-vaccines-delivery-plan>

Supplementary Material - Contact patterns of UK home delivery drivers and their use of protective measures during the COVID-19 pandemic: a cross-sectional study

Jessica RE Bridgen; Centre for Health Informatics, Computing and Statistics, Lancaster Medical School, Lancaster University, Lancaster, UK
Hua Wei; School of Health Sciences Centre, University of Manchester, Manchester, UK
Carl Whitfield; Immunity and Respiratory Medicine, University of Manchester, Manchester, UK
Yang Han; Department of Mathematics, University of Manchester, Manchester, UK
Ian Hall; Department of Mathematics, University of Manchester, Manchester, UK
Chris P Jewell; Department of Mathematics and Statistics, Lancaster University, Lancaster, UK
Martie JA van Tongeren; Academic Health Sciences Centre, University of Manchester, Manchester, UK
Jonathan M Read; Centre for Health Informatics, Computing and Statistics, Lancaster Medical School, Lancaster University, Lancaster, UK
jonathan.read@lancaster.ac.uk (corresponding author)

Contents

Tables 2
Survey questions..... 5

Tables

Table S1: Participants' employment information. N is the number of participants who provided a response to the question.

	Number of participants (%)
Current employment situation (N = 162)	
Self-employed and completely independent	88 (54.3%)
Self-employed but receiving certain workers benefits	14 (8.6%)
Employed by one company - full time	46 (28.4%)
Employed by one company - part time	11 (6.8%)
Employed by multiple companies	3 (1.9%)
No response	0 (0.0%)
Current weekly working hours (N = 162) [†] *	
0	0 (0.0%)
1 - 10	6 (3.7%)
11 - 20	17 (10.5%)
21 - 30	17 (10.5%)
31 - 40	44 (27.2%)
41 - 50	42 (25.9%)
51 or more	36 (22.2%)
In receipt of statutory sick leave pay (N = 151) [†] *	
Yes	38 (25.2%)
No	103 (68.2%)
Not sure	10 (6.6%)

[†] Question required a response from the participant.

* As a delivery driver

Table S2: Adjusted incidence rate ratios for number of customer contacts per shift by select variables.

	Multivariable analysis	
	Adjusted Incidence Rate Ratio (95%CI)	p-value
Age		
18-29	1.65 (1.07-2.60)	0.020
30-39	1.13 (0.77-1.68)	0.525
40-49	1.64 (1.15-2.34)	0.004
50-59	1.00	-
60-69	1.00 (0.60-1.75)	0.986
Sex		
Female	1.00	-
Male	0.98 (0.70-1.36)	0.910
Employment type		
Self-employed and independent	1.00	-
Self-employed and receiving some benefits	1.19 (0.74-1.97)	0.456
Employed by one company - full time	0.66 (0.47-0.94)	0.019
Employed by one company - part time	0.77 (0.39-1.58)	0.404
Employed by multiple companies	0.97 (0.40-2.80)	0.955
Furthest distance from depot to delivery (miles)		
0-9	1.00	-
10-19	1.18 (0.79-1.75)	0.422
20-99	1.23 (0.83-1.82)	0.274
100-499	1.07 (0.60-1.91)	0.805
Weekly working hours		
1-10	0.47 (0.24-1.00)	0.036
11-20	0.55 (0.32-0.99)	0.018
21-30	0.44 (0.28-0.71)	0.001
31-40	1.00	-
41-50	0.95 (0.63-1.43)	0.806
51+	0.98 (0.65-1.48)	0.918
Items normally delivered		
Small parcels only	1.00	-
Large items only	1.24 (0.55-3.13)	0.600
Small parcels and large items	0.88 (0.59-1.34)	0.541
Groceries only	0.34 (0.18-0.64)	0.001

Takeaway only	0.19(0.11-0.37)	<0.001
Other items only	0.43(0.24-0.80)	0.003
Other delivery type combinations	0.58(0.38-0.93)	0.014

Survey questions

Q1a. Are you aged 18 or over?

☐ Yes

☐ No

Q1b. Do you work as a home delivery driver in the UK? (including mail, parcels, homeware, takeaway, groceries etc.)

☐ Yes

☐ No

Q1c.

Please make sure you agree to the following before continuing with the survey:

You currently live in the UK;

You are a home delivery driver;

You have read the [Participant Information Sheet](#) and fully understand what is expected of you within this study;

Your participation is voluntary, and you are aware that you can stop the survey at any point; You consent to Lancaster University keeping the anonymised data for a period of 10-years after the study has finished;

☐ **I consent to taking part in the CoCoNet: Home Delivery Driver study**

Q2. Where in the UK do you currently live?

☐ England

☐ Northern Ireland

☐ Scotland

☐ Wales

☐ I do not live in the UK

Q3. What is your age?

☐ 18 - 29 years old

☐ 30 - 39 years old

- ☐ 40 - 49 years old
- ☐ 50 - 59 years old
- ☐ 60 - 69 years old
- ☐ 70 - 79 years old
- ☐ Aged 80 or over

Q4. What is your sex?

The answer you give can be different from what is on your birth certificate.

- ☐ Female
- ☐ Male
- ☐ Prefer not to say

Q5. Which of the following best describes your ethnicity?

- ☐ English / Welsh / Scottish / Northern Irish / British
- ☐ Irish
- ☐ Gypsy or Irish Traveller
- ☐ Any other White background
- ☐ White and Black Caribbean
- ☐ White and Black African
- ☐ White and Asian
- ☐ Any other Mixed / Multiple ethnic background
- ☐ Indian
- ☐ Pakistani

- ☐ Bangladeshi
- ☐ Chinese
- ☐ Any other Asian background
- ☐ African
- ☐ Caribbean
- ☐ Any other Black / African / Caribbean background
- ☐ Arab
- ☐ Any other ethnic group
- ☐ Prefer not to say

Q6. What is the first part of your home postcode?

For example, if your home postcode was LA1 4YW then you would enter LA1.

Q7. What is your highest level of education?

- ☐ Higher education and professional/vocational equivalents
- ☐ A levels, vocational level 3 and equivalents
- ☐ Trade apprenticeships
- ☐ GCSE/ O level grade A*-C, vocational level 2 and equivalents
- ☐ Qualifications at level 1 and below
- ☐ Other qualifications
- ☐ No qualifications
- ☐ Not sure

Q8. Are you self-isolating or shielding because of COVID-19?

A vulnerable individual here refers to a clinically extremely vulnerable person.

- ☐ I am not self-isolating or shielding
 - ☐ Self Isolating - I have symptoms of COVID
 - ☐ Self Isolating - Someone in my household has symptoms of COVID
 - ☐ Self Isolating - Someone in my support bubble has symptoms of COVID
 - ☐ Self Isolating - Someone I have been in contact with has symptoms of COVID
 - ☐ Self Isolating - Told to do so by a contact tracer
 - ☐ Self Isolating - Told to do so by a contact tracing phone app
 - ☐ Self Isolating - In travel-related quarantine
 - ☐ Shielding - I am a vulnerable individual
 - ☐ Shielding - I live with a vulnerable individual
 - ☐ Other - *please do not include any identifying information*
-

☐ Not sure

Q9. Have you ever had to self-isolate due to COVID-19 infection (either suspected or confirmed)?

- ☐ Yes
- ☐ No

Q10. In which month(s) have you had to self-isolate? Tick all that apply.

- ☐ March 2020
- ☐ April 2020
- ☐ May 2020
- ☐ June 2020
- ☐ July 2020
- ☐ August 2020
- ☐ September 2020
- ☐ October 2020
- ☐ November 2020
- ☐ December 2020

- ☐ January 2021
- ☐ February 2021
- ☐ March 2021

Q11. Have you ever tested positive for COVID-19?

- ☐ Yes
- ☐ No

Q12. In which month(s) did you test positive? Tick all that apply.

- ☐ March 2020
- ☐ April 2020
- ☐ May 2020
- ☐ June 2020
- ☐ July 2020
- ☐ August 2020
- ☐ September 2020
- ☐ October 2020
- ☐ November 2020
- ☐ December 2020
- ☐ January 2021
- ☐ February 2021
- ☐ March 2021

Q13. How many other people currently live with you at home?

- ☐ 0 - I live alone
- ☐ 1
- ☐ 2
- ☐ 3
- ☐ 4
- ☐ 5 or more

Q14. How many people of each age group live with you at home?

Do not include yourself.

Drop down options of 0, 1, 2, 3, 4, 5 or more for each age group.

0 - 9 year olds
10 - 19 year olds
20 - 29 year olds
30 - 39 year olds
40 - 49 year olds
50 - 59 year olds
60 - 69 year olds
70 - 79 year olds
Aged 80 or over

Q15. What do you normally deliver?

- ☐ Letters and mail
- ☐ Small parcels
- ☐ Large items (e.g. large appliances, furniture)
- ☐ Takeaway food
- ☐ Groceries
- ☐ Other - please specify _____

Q16. What is your current employment situation?

- ☐ Self-employed and completely independent
- ☐ Self-employed but receiving certain workers benefits (e.g. holiday pay, sick pay). Please specify - do not include any identifying information

- ☐ Employed by one company - full time
- ☐ Employed by one company - part time
- ☐ Employed by multiple companies

Q17. How many hours do you currently work as a delivery driver per week?

- ☐ 0 hours
- ☐ 1 - 10 hours
- ☐ 11 - 20 hours

- ☐ 21 - 30 hours
- ☐ 31 - 40 hours
- ☐ 41 - 50 hours
- ☐ 51 hours or more

Q18. How many deliveries did you make during your last shift?

Q19. When was the last shift you worked as a delivery driver?

- ☐ This week
- ☐ Earlier this month
- ☐ Last month
- ☐ 2 months ago or more

Q20. Did you use your own vehicle to make deliveries on your last shift?

- ☐ Yes
- ☐ No

Q21. During your last shift, how many customers did you meet face-to-face?

Q22. On your last shift, which types of face-to-face contact did you make with customers? Tick all that apply.

- ☐ Brief face-to-face interaction with customer (less than 5 minutes)
- ☐ Prolonged face-to-face interaction with customer (more than 5 minutes)
- ☐ Entered a customer's property (e.g. for installation or to drop off a heavy item)
- ☐ Hand signature required from customer
- ☐ Other, please specify _____

Q23. Were you able to maintain social distance (at least 2 metres apart) from all of the customers you met on your last shift?

- ☐ Yes, all of the time
- ☐ More than half of the time
- ☐ Less than half of the time
- ☐ No, none of the time
- ☐ Not sure

Q24. During your last shift, how many people did you meet in the location where you collect items for delivery (e.g. depots or food outlets)?

Only include those you had a face-to-face conversation with.

Q25. Were you able to maintain social distance (at least 2 metres apart) from everyone you met in the location where you collect items for delivery last shift?

- ☐ Yes, all of the time
- ☐ More than half of the time (2)
- ☐ Less than half of the time
- ☐ No, none of the time
- ☐ Not sure

Q26. During your last working week, what was the furthest distance you travelled from a collection point (at a depot or restaurant) to a delivery address?

- ☐ 0 - 9 miles
- ☐ 10 - 19 miles
- ☐ 20 - 99 miles
- ☐ 100 - 499 miles
- ☐ 500 miles or more

Q27. During your last working week, did you share a vehicle with a colleague to make deliveries? (e.g. for large items)

☐ Yes

☐ No

Q28. During your last working week, did you always share a vehicle with the same colleague?

☐ Yes

☐ No

Q29. What measures have you taken to prevent infection when sharing a vehicle? Tick all that apply.

- ☐ Keeping windows open
- ☐ Wearing a facemask
- ☐ Using hand sanitiser
- ☐ Other, please specify _____

Q30. On your last shift, did you use any Personal Protective Equipment (PPE)? Tick all that apply.

- ☐ Facemask
- ☐ Gloves
- ☐ Hand sanitiser
- ☐ Other, please specify _____

Q31. Was the PPE provided by your employers or contracting companies/platforms?

☐ Yes

☐ No

☐ Not sure

Q32. Do you think they are effective protection?

☐ Yes

☐ No

☐ Not sure

Q33. Do you think you have adequate knowledge and information about workplace COVID-19 risk?

☐ Yes

☐ No

Q34. Where do you learn about workplace COVID-19 risk? Tick all that apply.

- ☐ Company/platform communications
- ☐ Government website
- ☐ News and social media
- ☐ Other, please specify _____

Q35. Do you receive statutory sick leave pay for your delivery occupation?

- ☐ Yes
- ☐ No
- ☐ Not sure

Q36. How would you cover your living expenses if you had to take time off work due to being ill with COVID-19 or COVID-19 symptoms? Tick all that apply.

- ☐ Special COVID-19 funding scheme provided by the contracting companies/platforms
- ☐ Government self-employment income support scheme
- ☐ Social benefits
- ☐ Other, please specify _____

Q37. Since March 2020, have you worked whilst being ill with COVID-19 symptoms, or with a member of your household having a suspected or confirmed case of COVID-19?
COVID-19 symptoms include: a high temperature, a new continuous cough, a loss or change to your sense of smell or taste

- ☐ Yes
- ☐ No
- ☐ Not sure

Q38. What was the main reason you still went to work? Tick all that apply.

- ☐ Financial reasons
- ☐ Unable to find someone to cover my shifts
- ☐ Asked to or encouraged to carry on working by my employers
- ☐ Other, please specify _____