



OPEN ACCESS

Original research

# Cross-sectional associations of different types of nature exposure with psychotropic, antihypertensive and asthma medication

Anu W Turunen ,<sup>1</sup> Jaana Halonen ,<sup>2</sup> Kalevi Korpela,<sup>3</sup> Ann Ojala,<sup>4</sup> Tytti Pasanen,<sup>1</sup> Taina Siponen,<sup>1</sup> Pekka Tiittanen,<sup>1</sup> Liisa Tyrväinen,<sup>4</sup> Tarja Yli-Tuomi,<sup>1</sup> Timo Lanki<sup>1,5,6</sup>

► Additional supplemental material is published online only. To view, please visit the journal online (<http://dx.doi.org/10.1136/oemed-2022-108491>).

<sup>1</sup>Department of Health Security, Finnish Institute for Health and Welfare, Kuopio, Finland

<sup>2</sup>Department of Health Security, Finnish Institute for Health and Welfare, Helsinki, Finland

<sup>3</sup>Faculty of Social Sciences (Psychology), Tampere University, Tampere, Finland

<sup>4</sup>Bioeconomy and Environment, Natural Resources Institute, Helsinki, Finland

<sup>5</sup>Department of Environmental and Biological Sciences, University of Eastern Finland, Kuopio, Finland

<sup>6</sup>School of Medicine, University of Eastern Finland, Kuopio, Finland

## Correspondence to

Dr Anu W Turunen, Department of Health Security, Finnish Institute for Health and Welfare, Kuopio, Finland; [anu.turunen@thl.fi](mailto:anu.turunen@thl.fi)

Received 24 May 2022

Accepted 5 December 2022

Published Online First

5 January 2023



© Author(s) (or their employer(s)) 2023. Re-use permitted under CC BY-NC. No commercial re-use. See rights and permissions. Published by BMJ.

**To cite:** Turunen AW, Halonen J, Korpela K, et al. *Occup Environ Med* 2023;**80**:111–118.

## ABSTRACT

**Background** Exposure to natural environments is thought to be beneficial for human health, but the evidence is inconsistent.

**Objective** To examine whether exposure to green and blue spaces in urban environments is associated with mental and physical health in Finland.

**Methods** The Helsinki Capital Region Environmental Health Survey was conducted in 2015–2016 in Helsinki, Espoo and Vantaa in Finland (n=7321). Cross-sectional associations of the amounts of residential green and blue spaces within 1 km radius around the respondent's home (based on the Urban Atlas 2012), green and blue views from home and green space visits with self-reported use of psychotropic (anxiolytics, hypnotics and antidepressants), antihypertensive and asthma medication were examined using logistic regression models. Indicators of health behaviour, traffic-related outdoor air pollution and noise and socioeconomic status (SES) were used as covariates, the last of these also as a potential effect modifier.

**Results** Amounts of residential green and blue spaces or green and blue views from home were not associated with medications. However, the frequency of green space visits was associated with lower odds of using psychotropic medication (OR=0.67, 95% CI 0.55 to 0.82 for 3–4 times/week; 0.78, 0.63 to 0.96 for ≥5 times/week) and antihypertensive (0.64, 0.52 to 0.78; 0.59, 0.48 to 0.74, respectively) and asthma (0.74, 0.58 to 0.94; 0.76, 0.59 to 0.99, respectively) medication use. The observed associations were attenuated by body mass index, but no consistent interactions with SES indicators were observed.

**Conclusions** Frequent green space visits, but not the amounts of residential green or blue spaces, or green and blue views from home, were associated with less frequent use of psychotropic, antihypertensive and asthma medication in urban environments.

## INTRODUCTION

Nature exposure (ie, exposure to green and blue spaces) is thought to be beneficial, especially for mental, cardiovascular and respiratory health.<sup>1–4</sup> For example, many reviews have reported an association between green space exposure and mental<sup>1 5</sup> and cardiovascular<sup>1 6–8</sup> health, mainly based on cross-sectional studies. However, reviews of longitudinal and experimental studies have evaluated the evidence as inconsistent or suggestive.<sup>9–12</sup>

## WHAT IS ALREADY KNOWN ON THIS TOPIC

⇒ Exposure to natural environments is thought to be beneficial for human health, but the evidence is inconsistent.

## WHAT THIS STUDY ADDS

⇒ In this cross-sectional study, higher frequency of green space visits was associated with lower frequency of psychotropic, antihypertensive and asthma medication use, and the association was not dependent on socioeconomic status. Amounts of residential green and blue spaces or green and blue views from home were not associated with psychotropic, antihypertensive and asthma medication use.

## HOW THIS STUDY MIGHT AFFECT RESEARCH, PRACTICE OR POLICY

⇒ Mounting scientific evidence supporting the health benefits of nature exposure is likely to increase the supply of high-quality green spaces in urban environments and promote their active use. This might be one way to improve health and welfare in cities.

In particular, findings for asthma have been inconsistent.<sup>11</sup> In addition to some protective associations, exposure to different types of green spaces has been linked to adverse asthma outcomes in some,<sup>13</sup> but not all,<sup>14</sup> studies. Regarding blue space exposure, a review of mainly cross-sectional studies suggests an association between exposure to blue space and mental well-being, while evidence regarding cardiovascular health is more limited.<sup>2</sup>

Inconsistent evidence may stem from differences, for example, in study designs; characteristics of green space exposure, such as definitions, quality and accessibility<sup>15</sup>; cultural and individual characteristics, such as environmental preferences<sup>4 16</sup> and intrinsic motivation to nature visits.<sup>17</sup> Therefore, it is possible that such associations do not exist in some populations. A majority of evidence on the association between green space and health is derived from objectively measured residential green space, and information on the actual active or passive use of green space is often lacking.<sup>5 18</sup> However, tentative evidence suggests that visiting green spaces or even having views over green

spaces may be more strongly associated with health and well-being than the mere amount of green space in the residential area.<sup>19</sup>

Despite inconsistent evidence, there are plausible pathways that can explain potential beneficial effects of nature exposure on physical and mental health and well-being, such as increased physical activity, reduced stress, social cohesion and beneficial immunological reactions,<sup>4 11 18 20–22</sup> but these mechanisms and the interlinkages between them are not yet fully understood.

Medication use indicates an illness that is serious enough to require the use of a prescribed drug. However, medications have rarely been used as indicators of health status in studies on the health effects of nature exposure. This study aimed to investigate whether the amounts of residential green and blue space, frequency of green space visits and green or blue views from home are separately associated with self-reported use of psychotropic (anxiolytics, hypnotics and antidepressants), anti-hypertensive and asthma medication in Finland. These medicine groups were chosen because mental health problems, insomnia, hypertension and asthma are major disease groups from a public health perspective, and information on the relationship between nature exposure and asthma is lacking. Another aim was to assess potential effect modification by socioeconomic status (SES) because there is some evidence that the health benefits of nature exposure might be most evident among lowest socioeconomic groups—for example, due to the lack of access to other health-promoting resources.<sup>23 24</sup>

## MATERIALS AND METHODS

The Finnish Institute for Health and Welfare conducted the Helsinki Capital Region Environmental Health Survey in Helsinki, Espoo and Vantaa between 2015 and 2016 using a mailed self-administered questionnaire.<sup>25</sup> These three cities comprise the capital region and largest urban area in Finland. The survey gathered information on how the urban population experiences exposure to various environmental factors in their living environment, related health risks and personal health status. The former Population Register Centre (currently Digital and Population Data Services Agency) provided three random samples from native Finnish-speaking residents aged 25 years or older in Helsinki (n=8000, data collected between May and August in 2015), Espoo (n=4000, June–August 2016) and Vantaa (n=4000, June–August 2016). The total eligible sample size was 16 000, and a response rate of 46% resulted in 7321 participants. To maximise the number of observations, each exposure–endpoint combination was allowed to have its own total number of observations (n=5881–6031).

In comparison with the general population of Helsinki in 2015 and Espoo and Vantaa in 2016, based on Statistics Finland's free-of-charge statistical databases, the proportion of women was higher among the questionnaire respondents (57% among the respondents vs 52% among the general population). Most respondents belonged to the age groups 45–54, 55–64 and 65–74 years. The proportion of respondents in the age group 45–54 years was similar to (19%), and slightly higher in age groups 55–64 years (20% vs 16%) and 65–74 years (20% vs 13%) than, that in the general population of Helsinki, Espoo and Vantaa. Additionally, the prevalence of medication use among the respondents was approximately similar to the prevalence of the corresponding diseases in Finland, based on the Duodecim online Health Library.

## Exposure variables

The amounts of residential green and blue spaces were calculated as proportions of green space (%) and blue space (%) in a buffer around the centre point coordinates of the respondent's residential building, based on high-resolution land use and land cover data from the Urban Atlas 2012<sup>26</sup> (online supplemental figure S1). The amount of green space within a 1 km radius around the respondent's home (%) was chosen as the main green space exposure variable because 1 km is a widely used approximation of a 10 min walking distance.<sup>27</sup> Green space consisted of the following Urban Atlas land use classes (class code): green urban areas, meaning public green areas for predominantly recreational use, such as gardens, zoos, parks, castle parks and cemeteries (14 100); forests (31 000); herbaceous vegetation associations, including natural grassland and moors (32 000); and wetlands (40 000). Arable land—for example, fields (21 000) and pastures (23 000), was excluded because it was not thought to be accessible. To help the interpretation of results of the logistic regression analyses, results on the amount of residential green space (used as continuous variable) were scaled to represent 10% increase in exposure. In the sensitivity analyses, the amount of green space within a 300 m radius around the respondent's home was used as an alternative exposure variable instead of 1 km because 300 m is a commonly used threshold for accessibility.<sup>27</sup>

In the Urban Atlas 2012, class 50 000 (water) includes the total area of lakes and rivers (minimum mapping unit of 1 ha). For sea areas, only coastal areas are included in class 50 000, whereas open sea areas are unclassified. Thus, open sea areas were taken from the National Land Survey of Finland Topographic Database 12/2015. If water data from the National Land Survey of Finland Topographic Database had been used instead of the Urban Atlas, 95 respondents out of 5987 would have been classified as blue space '>10%' instead of '>0–10%'. This difference is negligible (1.6% of the respondents) (online supplemental figure 2). More than half (54%) of the respondents had no blue space around their homes; thus, the amount of blue space within 1 km radius around the respondents' home (%) was categorised (0%, >0%–10%, >10%). Cut-off points for the categories were selected to ensure a sufficient number of observations in each category.

To assess the frequency of green space visits, respondents were asked how often they spent time or exercised outdoors in green spaces (parks, forests, meadows, etc) during the warm season (May–September). The response options were: (1) never; (2) <1 time per week; (3) 1–2 times per week; (4) 3–4 times per week and (5) ≥5 times per week. The first two options were combined for the analyses.

Information about green and blue views from home was obtained by asking the respondents whether they had a view of green or blue space from any of the windows of their dwelling. In the questionnaire, green areas were defined as forests, parks, fields, meadows, boglands and rocks (and any playgrounds and play fields in them), and blue areas as sea, lakes and rivers. The response options were: (1) no; (2) yes, I look at it seldom; (3) yes, I look at it occasionally and (4) yes, I look at it often. Options 2 and 3 were combined for the analyses.

## Outcome variables

Self-reported use of psychotropic medication (anxiolytics, hypnotics and antidepressants), antihypertensives and asthma medications was used as outcomes. Other medicine groups enquired in the questionnaire were analgesics for different purposes, hypnotics, hay fever medication, acetosalicylic acid for the prevention of myocardial infarction, anticoagulants and

antibiotics. The respondents were asked about the last time they had used different medicine groups, and the response options were: (1) within the last week; (2) 1–4 weeks ago; (3) 1–12 months ago; (4) more than a year ago and (5) never. For the analyses, medication use was dichotomised by combining the first three options (yes) and the last two options (no). Self-reports on doctor-diagnosed depression, hypertension and asthma were used as alternative outcomes in sensitivity analyses. A vast majority (95%) of the respondents had congruent responses between anti-hypertensive medication use and doctor-diagnosed hypertension and asthma medication use and doctor-diagnosed asthma. There were no comparable disease questions in the questionnaire about the use of psychotropic medication.

### Covariates

Variables likely to be associated with exposure and outcome were selected a priori based on published literature<sup>5 6 9</sup> or rational judgement and included as covariates (online supplemental figure 3). Details of age, sex, marital status, education, employment status, annual household income, smoking, alcohol use, physical activity at work and use of recreational property (ie, spending time at holiday houses, secondary residences and summer cottages) during the warm season (weeks per year) were obtained from the questionnaire. The zip area-level annual mean income (€) and unemployment rate (%; used in sensitivity analyses) were acquired from Statistics Finland. Variables that might be mediators of the examined associations (body mass index (BMI) and leisure-time physical activity,<sup>28</sup> and pet ownership) or have less often been examined as potential confounders (living in a detached/single family house and living longer than 1 year in the current apartment) were introduced into model 3 in the sensitivity analyses.

Residential exposure to traffic noise ( $L_{den}$  dB) was estimated based on façade noise maps from the Sito Consulting Company. Calculations for 2017 were carried out in accordance with the Environmental Noise Directive 2002/49/EC using the Common Noise Assessment Methods in Europe (CNOSSOS-EU) and data from 2016.

Residential outdoor levels of  $NO_2$  from road traffic ( $\mu g/m^3$ ) were based on emission and dispersion modelling.<sup>29</sup> The dispersion model used was the ‘Contaminants in the Air from a Road-Finnish Meteorological Institute’ (CAR-FMI),<sup>30</sup> which considers the chemical reactions causing nitrogen oxides to become oxidised. The highest modelled annual average concentration in 2010–2014 at the nearest outdoor receptor point was used as a proxy for the home outdoor concentration. This was the only indicator available, but it was not expected to have a significant effect on the spatial variability of the estimated exposures. The grid size for  $NO_2$  varied from 25 m, close to the major roads, to 500 m in rural areas.

### Statistical analyses

All statistical analyses were performed using SAS Enterprise Guide 7.15 HF8. Means, frequencies and Pearson’s correlation coefficients were calculated using univariate and bivariate analyses.

Multivariate associations between green and blue space indicators and medication use were modelled using a logistic generalised additive model (GAMPL procedure in SAS). Thin-plate regression splines were used to explore whether the exposure–response relationships were linear. Based on the non-linear curves in these analyses, age and BMI (in the sensitivity analyses) were added to the models as splines.

In the logistic regression analyses, the crude model was adjusted for age and sex (model 1), and the second model (model 2) was additionally adjusted for socioeconomic indicators (marital status, employment status, education, annual household income and area-level annual mean income), health behaviour (alcohol use, smoking and physical activity at work) and recreational property during the warm season. Finally, other environmental exposures (traffic noise and  $NO_2$  from road traffic) were added (model 3). The results are presented as OR estimates and their 95% confidence intervals (95% CIs).

Respondents with missing values for any of the variables used in model 3 were excluded from all the analyses to produce comparable results from models 1–3. To test the potential effect of exclusions, model 1 was run without excluding all exposure–outcome pairs. The ORs and their CIs remained essentially similar to the results from model 1 with exclusions.

To explore the potential effect modification by SES, the interaction term between each of the exposure variables and SES indicators was included in model 3 for all the four exposures and three outcomes. For the interaction analyses, education and annual household income were compressed into three categories instead of the original four, and continuous area-level annual mean income and area-level unemployment rate were categorised into tertiles. If the p value for the interaction term was  $<0.10$ , a stratified analysis was performed. To produce an overall p value for the interaction term, a logistic regression model (the LOGISTIC procedure in SAS) was used instead of a logistic generalised additive model; thus, age was categorised (25–34, 35–44, 45–54, 55–64, 65–74 and  $\geq 75$  years) instead of treating it as a spline.

To assess the consistency and robustness of the findings, various alternative and additional variables were introduced individually into the model 3 for the sensitivity analyses. First, we tested alternative exposure variables: the amounts of green and blue space within a 300 m buffer (instead of a 1 km buffer), all green spaces (including fields and pastures that were not included in the original variable) within 1 km of the respondent’s home and all natural spaces (the sum of all green and blue spaces) within 1 km of the respondent’s home. Second, self-reported doctor-diagnosed depression, hypertension and asthma were used as the alternative outcomes. Third, the following alternative covariates were used: area-level unemployment rate (%; instead of area-level annual mean income), categorised area-level annual mean income (instead of continuous) and categorised  $NO_2$  from road traffic (instead of continuous). Fourth, additional covariates were included in model 3 individually: BMI (as a spline), leisure-time physical activity, pet ownership, living in a detached/single family house and city. Finally, model 3 analyses were restricted to those who had lived longer than 1 year in their current apartment (93% of the respondents).

## RESULTS

### Univariate and bivariate analyses

The characteristics of the study population are presented in tables 1 and 2, respectively. The Pearson correlation coefficients between continuous environmental exposures and SES indicators, means of continuous exposures and SES indicators by categorical exposures and SES indicators, and frequencies of categorical exposures by SES indicators are presented in online supplemental tables S1–S7. For example, those who reported visiting green spaces often had a slightly higher amount of residential green spaces around their home (online supplemental table 2), but the differences between the categories were negligible.

**Table 1** Characteristics of the study population (n=5987): categorical variables

Characteristics	No	%
Sex (n=5987)		
Female	3418	57
Male	2569	43
Marital status (n=5987)		
Single	1025	17
Married, cohabiting or in a registered partnership	3947	66
Divorced, separated or widowed	1015	17
Education (n=5987)		
Comprehensive school	803	13
Vocational or high school	1378	23
College or university of applied sciences	1926	32
University	1880	32
Employment status (n=5987)		
Working full time	3176	53
Working part time	352	6
Retired	1960	33
Unemployed	291	5
Other (incl. student, at home mother/father)	208	3
Annual household income (before taxes) (n=5987)		
≤€30 000	1462	24
>€30 000–50,000	1527	26
>€50 000–90,000	1899	32
>€90 000	1099	18
Smoking (n=5987)		
No	4785	80
Yes, <1 unit per day	280	5
Yes, 1–9 units per day	387	6
Yes, ≥10 units per day	535	9
Alcohol use (during the last week) (n=5987)		
Not at all	1889	32
1–6 portions	2995	50
≥7 portions	1103	18
Physical activity at work (n=5987)		
High, my work is physically strenuous	698	12
Moderate	1196	20
Low, my work is mainly sedentary OR not working	4093	68
Using recreational property during warm season (n=5987)		
Not at all/<2 weeks per year	3944	66
2–8 weeks per year	1517	25
> 8 weeks per year	526	9
Psychotropic medication use (n=5987)		
Yes	1195	20
No	4792	80
Antihypertensive medication use (n=6031)		
Yes	1625	27
No	4406	73
Asthma medication use (n=5983)		
Yes	699	12
No	5284	88
Frequency of green space visits (n=5886)		
Never/<1 time per week	1014	17
1–2 times/week	1917	33
3–4 times/week	1712	29
≥5 times/week	1243	21
Green view from home (n=5939)		

continued

**Table 1** continued

Characteristics	No	%
No	1397	24
Yes, I look at it seldom/occasionally	1800	30
Yes, I look at it often	2742	46
Blue view from home (n=5949)		
No	5234	88
Yes, I look at it seldom/occasionally	248	4
Yes, I look at it often	467	8
Amount of residential blue space (n=5987)		
0%	3245	54
>0%–10%	1781	30
>10%	961	16

**Multivariate analyses**

Amounts of residential green and blue spaces were not associated with self-reported use of psychotropic (table 3), antihypertensive (table 4), or asthma (table 5) medications, although OR estimates for the amount of residential green space and asthma medication use (OR=1.06, 95% CI 0.99 to 1.14) and amount of residential blue space >0–10% and psychotropic medication (1.10, 0.95 to 1.28) were >1. Similarly, green or blue views from home were not associated with medication use (tables 3–5), but the OR estimates were >1 for looking at the green view seldom or occasionally and both antihypertensive (1.07, 0.88 to 1.30) and asthma (1.11, 0.88 to 1.39) medications.

The frequency of green space visits was associated with decreased odds of medication use. In the main model, when the reference was <1 green space visit per week, the odds for psychotropic medication use were 0.67 (95% CI 0.55 to 0.82) for those visiting green spaces 3–4 times per week and 0.78 (0.63 to 0.96) for those visiting green spaces at least five times per week (table 3). The respective odds for antihypertensive medication use were 0.64 (0.52 to 0.78) and 0.59 (0.48 to 0.74) (table 4), and for asthma medication use, 0.74 (0.58 to 0.94) and 0.76 (0.59 to 0.99) (table 5). Overall, the effect estimates remained essentially similar for the different models with different sets of confounders.

The only indication of effect modification based on the p value and consistency of effect estimates across categories was observed between the frequency of green space visits and annual household income in the model for psychotropic medication use. The effects of visiting green spaces were stronger among those reporting lowest annual household income (<€30 000), whereas these associations were non-existent among those reporting highest annual household income (>€90 000) (online supplemental table 8).

**Sensitivity analyses**

The results remained essentially similar when using alternative exposure, outcome, SES and air pollution variables, as well as additional covariates. Adding BMI to the main model attenuated the associations regarding antihypertensive and asthma medication use (online supplemental table 9).

**DISCUSSION**

In this cross-sectional study in the Helsinki capital region of Finland, a higher frequency of green space visits was associated with a lower frequency of psychotropic, antihypertensive and asthma medication use, and the association was not dependent on SES. The amounts of residential green and blue spaces or green

**Table 2** Characteristics of the study population (n=5987): continuous variables

Characteristics	Mean	SD	Median	Minimum	Maximum
Age, years	54	16	54	25	100
Area-level annual mean income, €1000	27	6	26	12	69
Arealevel unemployment rate, %	6.0	1.6	6.0	1.6	14
Amount of residential green space, %	25	5	24	2	82
Road traffic noise, dB*	58	14	50	30	75
NO <sub>2</sub> from road traffic, µg/m <sup>3</sup>	7.3	4.3	6.3	0	31

\*Average sound pressure in decibels.

and blue views from home were not associated with medication use, although there were some increased estimates, and due to limited sample size, associations cannot be ruled out.

Previous evidence on the effects of nature exposure on mental, cardiovascular and respiratory health is somewhat mixed.<sup>1 2 5-12</sup> In line with our results for the association between nature exposure and mental health, in a survey across 18 countries (n=16 703), no clear associations were observed between green or blue space exposure indicators and antidepressive or anxiety medication use,<sup>31</sup> and in a cross-sectional study of ageing cohorts in four European studies (n=16 189), no association between distance to the nearest green space and self-reported depressed affect was observed.<sup>32</sup> In contrast to our results, a recent longitudinal study from Finland (n=19 851) observed an association between high residential greenness and low risk of doctor-diagnosed depression<sup>33</sup>; however, no information on visits to green space were used. Contrary to our results, a Spanish cross-sectional study (n=958) found that surrounding greenness was associated with decreased odds of self-reported benzodiazepine use.<sup>34</sup>

For hypertension, a cross-sectional study using data from Barcelona and Brussels (n=5735) reported an association between distance to the nearest green space and self-reported hypertension in Barcelona but not in Brussels.<sup>35</sup> Another cross-sectional study from Brazil (n=3418) found a beneficial association between increased number of street trees and decreased distance from urban parks and decreased prevalence of hypertension diagnosis.<sup>36</sup>

The associations between nature exposure and respiratory diseases, such as asthma, are thought to be bidirectional. Vegetation can improve air quality and is a source of beneficial microbial agents; however, it is also a source of allergens, which may exacerbate allergic responses and interact with air pollution.<sup>37</sup> Additionally, beneficial effects have been observed mainly in children and adolescents.<sup>38</sup> When studying asthma, the results can be affected by geographical study area, types of vegetation and other environmental exposures, as well as seasonality.<sup>11</sup> A review of mainly cross-sectional studies reported a suggestive association between increased green space exposure and decreased incidence

**Table 3** Odds ratios (OR) and 95% confidence intervals (CIs) for the association between nature exposure and psychotropic medication use

	Psychotropic medication use*					
	Model 1†		Model 2‡		Model 3§	
	OR	95% CI	OR	95% CI	OR	95% CI
Amount of residential green space¶ (n=5987)	0.94	0.89 to 1.00	0.96	0.90 to 1.01	0.96	0.90 to 1.02
Frequency of green space visits (n=5886)						
Never/<1 time per week	ref	ref	ref	ref	ref	ref
1–2 times/week	0.76	0.63 to 0.91	0.80	0.66 to 0.97	0.80	0.66 to 0.97
3–4 times/week	0.64	0.53 to 0.78	0.67	0.55 to 0.82	0.67	0.55 to 0.82
≥5 times/week	0.74	0.60 to 0.91	0.77	0.63 to 0.95	0.78	0.63 to 0.96
Green view from home (n=5939)						
No	ref	ref	ref	ref	ref	ref
Yes, I look at it seldom/occasionally	0.94	0.79 to 1.13	0.96	0.80 to 1.16	0.97	0.81 to 1.17
Yes, I look at it often	0.93	0.79 to 1.10	0.97	0.82 to 1.15	0.98	0.83 to 1.16
Amount of residential blue space (n=5987)						
0%	ref	ref	ref	ref	ref	ref
>0%–10%	1.10	0.95 to 1.27	1.11	0.95 to 1.28	1.10	0.95 to 1.28
>10%	1.04	0.87 to 1.25	1.04	0.86 to 1.27	1.03	0.85 to 1.26
Blue view from home (n=5949)						
No	ref	ref	ref	ref	ref	ref
Yes, I look at it seldom/occasionally	1.02	0.74 to 1.42	1.03	0.74 to 1.44	1.03	0.74 to 1.43
Yes, I look at it often	1.00	0.79 to 1.26	1.03	0.81 to 1.32	1.03	0.80 to 1.31

\*Anxiolytics, hypnotics and antidepressants, based on the question 'When was the last time you used the following medication?' Within the last week/1–4 weeks ago/1–12 months ago=YES; never/more than a year ago=NO.

†Model 1 (crude) adjusted for age and sex.

‡Model 2 adjusted for age, sex, marital status, education, employment status, annual household income, smoking, alcohol use, physical activity at work, using recreational property during warm season and area-level annual mean income.

§Model 3 (main) adjusted for age, sex, marital status, education, employment status, annual household income, smoking, alcohol use, physical activity at work, using recreational property during warm season, area-level annual mean income, road traffic noise and NO<sub>2</sub> from road traffic.

¶Within a 1 km radius around the respondent's home, calculated for 10% increase.

**Table 4** Odds ratios (OR) and 95% confidence intervals (CIs) for the association between nature exposure and antihypertensive medication use

	Antihypertensive medication use*					
	Model 1†		Model 2‡		Model 3§	
	OR	95% CI	OR	95% CI	OR	95% CI
Amount of residential green space¶ (n=6031)	1.01	0.95 to 1.07	0.99	0.94 to 1.06	0.99	0.93 to 1.05
Frequency of green space visits (n=5928)						
Never/<1 time per week	ref	ref	ref	ref	ref	ref
1–2 times/week	0.83	0.69 to 1.00	0.84	0.70 to 1.02	0.84	0.69 to 1.02
3–4 times/week	0.63	0.52 to 0.76	0.64	0.53 to 0.78	0.64	0.52 to 0.78
≥5 times/week	0.60	0.49 to 0.74	0.60	0.48 to 0.74	0.59	0.48 to 0.74
Green view from home (n=5982)						
No	ref	ref	ref	ref	ref	ref
Yes, I look at it seldom/occasionally	1.07	0.89 to 1.30	1.08	0.89 to 1.31	1.07	0.88 to 1.30
Yes, I look at it often	0.94	0.79 to 1.12	0.95	0.80 to 1.14	0.94	0.79 to 1.13
Amount of residential blue space (n=6031)						
0%	ref	ref	ref	ref	ref	ref
>0%–10%	1.02	0.88 to 1.19	1.03	0.89 to 1.19	1.03	0.88 to 1.19
>10%	0.93	0.78 to 1.12	1.00	0.82 to 1.21	0.97	0.80 to 1.19
Blue view from home (n=5993)						
No	ref	ref	ref	ref	ref	ref
Yes, I look at it seldom/occasionally	0.83	0.59 to 1.17	0.86	0.61 to 1.21	0.85	0.60 to 1.21
Yes, I look at it often	0.83	0.66 to 1.05	0.88	0.69 to 1.12	0.86	0.68 to 1.10

\*Based on the question 'When was the last time you used the following medication?' Within the last week/1–4 weeks ago/1–12 months ago=YES; never/more than a year ago=NO.  
†Model 1 (crude) adjusted for age and sex.  
‡Model 2 adjusted for age, sex, marital status, education, employment status, annual household income, smoking, alcohol use, physical activity at work, using recreational property during warm season and area-level annual mean income.  
§Model 3 (main) adjusted for age, sex, marital status, education, employment status, annual household income, smoking, alcohol use, physical activity at work, using recreational property during warm season, area-level annual mean income, road traffic noise and NO<sub>2</sub> from road traffic.  
¶Within a 1 km radius around the respondent's home, calculated for 10% increase.

of asthma.<sup>8</sup> In the present study, more frequent green space visits were associated with less frequent asthma medication use, but this association was attenuated after adjusting for BMI. This might be explained by the fact that obesity is a known risk factor for asthma.<sup>39</sup> In contrast, in the present study the OR estimate for asthma medication use increased with increasing amounts of residential green space. Similar increased estimates have been previously observed—for example, in a Spanish cross-sectional study among children (n=3178), regarding proximity to green space and self-reported current asthma.<sup>14</sup>

In the present study, the frequency of green space visits was the only type of nature exposure that showed an inverse association with medication use. This finding is in line with tentative evidence emphasising the importance of actual use of green space in relation to mental health,<sup>19, 31</sup> and it suggests that the same holds true for other health conditions, such as asthma and hypertension. The absence of an association between objectively evaluated nature exposure and health in this and some earlier studies can be explained, for instance, by the lack of information on the quality of green areas,<sup>40</sup> or the fact that a mere amount of accessible green space does not necessarily indicate an actual interaction between the individual and surrounding environment.<sup>10, 41</sup> It is also possible that in certain populations, an association between nature exposure and health cannot be observed. It should also be noted that Finland has a high forest coverage, high frequency of nature visits and the majority of outdoor recreation occurs in municipality-owned areas.<sup>42, 43</sup> In addition, Finnish cities are relatively green<sup>44, 45</sup>; thus, it is possible that the amount of green space is not a limiting factor in this study, but that those willing to use green space can access it with minimal effort.

For blue space exposure, there is suggestive evidence of an association with better mental well-being.<sup>2</sup> For example, a recent cross-sectional study conducted in the UK (n=21 097) observed an inverse association between residential freshwater coverage and mental health,<sup>28</sup> whereas a Spanish cross-sectional study did not.<sup>34</sup>

Evidence regarding green or blue views from homes is scarce. Contrary to our results, a small Spanish cross-sectional study (n=465) suggests that enjoying a view of green space from home could decrease the risk of self-reported depression.<sup>21</sup>

In the present study, many of the observed associations between residential green spaces and medications were attenuated when BMI was included in the models, indicating that the potential association is likely mediated, at least partially, by BMI. This was also reflected in the observation that those who reported visiting green spaces often had a slightly lower BMI than those who visited green spaces less often.

No consistent effect modification by SES was observed in this study, and there was practically no variation in the frequency of green space visits or the amount of residential green space according to SES. However, in line with previous findings, it was observed that the inverse association between the frequency of green space visits and psychotropic medication use was most evident among those reporting the lowest annual household income. In addition to differences in, for example, study populations and designs, the lack of a consistent effect modification could be explained by the fact that in Europe, public green spaces, such as parks, have better quality in lower-SES neighbourhoods compared with, for example, those in North America.<sup>24</sup> Similar inconsistent effect modification by SES was observed in a recent

**Table 5** Odds ratios (OR) and 95% confidence intervals (CIs) for the association between nature exposure and asthma medication use

	Asthma medication use*					
	Model 1†		Model 2‡		Model 3§	
	OR	95% CI	OR	95% CI	OR	95% CI
Amount of residential green space¶ (n=5983)	1.07	1.01 to 1.16	1.07	0.99 to 1.14	1.06	0.99 to 1.14
Frequency of green space visits (n=5881)						
Never/<1 time per week	ref	ref	ref	ref	ref	ref
1–2 times/week	0.81	0.65 to 1.02	0.85	0.68 to 1.07	0.85	0.68 to 1.07
3–4 times/week	0.69	0.54 to 0.87	0.74	0.58 to 0.95	0.74	0.58 to 0.94
≥5 times/week	0.72	0.56 to 0.93	0.76	0.59 to 0.99	0.76	0.59 to 0.99
Green view from home (n=5937)						
No	ref	ref	ref	ref	ref	ref
Yes, I look at it seldom/occasionally	1.13	0.90 to 1.41	1.11	0.89 to 1.39	1.11	0.88 to 1.39
Yes, I look at it often	1.08	0.87 to 1.33	1.10	0.90 to 1.36	1.10	0.89 to 1.36
Amount of residential blue space (n=5983)						
0%	ref	ref	ref	ref	ref	ref
>0%–10%	1.03	0.86 to 1.23	1.03	0.86 to 1.23	1.03	0.86 to 1.23
>10%	0.93	0.74 to 1.17	1.00	0.79 to 1.28	0.99	0.77 to 1.26
Blue view from home (n=5946)						
No	ref	ref	ref	ref	ref	ref
Yes, I look at it seldom/occasionally	0.80	0.51 to 1.24	0.81	0.52 to 1.26	0.80	0.52 to 1.26
Yes, I look at it often	1.00	0.75 to 1.34	1.07	0.80 to 1.44	1.06	0.79 to 1.43

\*Based on the question 'When was the last time you used the following medication?' Within the last week/1–4 weeks ago/1–12 months ago=YES; never/more than a year ago=NO.  
†Model 1 (crude) adjusted for age and sex.  
‡Model 2 adjusted for age, sex, marital status, education, employment status, annual household income, smoking, alcohol use, physical activity at work, using recreational property during warm season and area-level annual mean income.  
§Model 3 (main) adjusted for age, sex, marital status, education, employment status, annual household income, smoking, alcohol use, physical activity at work, using recreational property during warm season, area-level annual mean income, road traffic noise and NO<sub>2</sub> from road traffic.  
¶Within a 1 km radius around the respondent's home, calculated for 10% increase.

Finnish longitudinal study on residential greenness and doctor-diagnosed depression.<sup>33</sup>

### Strengths and limitations

One of the strengths of the present study is the combination of objective and self-reported information on nature exposure that reflects different aspects of exposure (ie, amount/availability vs use of green space, active vs passive use of green space, and accessible vs non-accessible green space). In addition, the questionnaire data enabled extensive confounder control in the statistical analyses. Another strength is the availability of individual-level data on exposure to traffic noise and traffic-related air pollution.

One of the limitations is that healthy individuals are typically more likely to answer self-administered questionnaires than those with health problems or problems with other aspects of life,<sup>46</sup> which might bias the results. Nevertheless, the response rate of the questionnaire was 46%, which is relatively high nowadays.<sup>47–48</sup> Furthermore, detailed data on the quality of green space (for example, size and type) and data covering private green areas are lacking. In Helsinki, having a short distance to at least a middle-sized green area and high nature-relatedness are important for participation in green exercise.<sup>40</sup> For blue space exposure, we had no self-reported information on visits to blue spaces, and the amount of residential blue space did not cover blue spaces that were <1 hectare in size. The latter limitation had only a minor effect on the results.

A major limitation that complicates the drawing of conclusions in this study is the cross-sectional design. Especially, when exposure variables describe the active use of green spaces, such as visiting green spaces, and the temporal order is not evident, it is

possible that the findings reflect the fact that better health enables a person to spend more time outdoors. Finally, it should also be noted that medication use indicates a serious, diagnosed illness that requires a prescribed drug, but it is not a perfect indicator of current health status, especially when the symptoms are less severe.

### CONCLUSION

More frequent visits to green spaces were associated with less frequent use of psychotropic, antihypertensive and asthma medications in the Helsinki capital region. However, amounts of residential green and blue spaces and having a green or blue views from home were not associated with these health indicators. The observed associations were partially explained by BMI. No consistent effect modification by SES indicators was observed.

**Twitter** Jaana Halonen @jaana\_halonen

**Acknowledgements** The authors thank researcher Marjo Neuvonen for her input in the design of the questionnaire.

**Contributors** TL designed the study, and TL, LT, KK, AO and PT designed the questionnaire. TYT produced the exposure data. TL, PT, JH and AWT drafted the analysis plan, and AWT analysed the data and drafted the manuscript. TL, PT, JH and AWT interpreted the results. All authors revised the draft and approved the manuscript before submission. TL and AWT act as the guarantors of the work.

**Funding** This work was supported by the Academy of Finland (Decision No. 255440), and the Ministry of the Environment as a part of Lähiöohjelma 2020–2022 (Document No. VN/10679/2020-YM-3).

**Competing interests** None declared.

**Patient consent for publication** Not applicable.

**Ethics approval** This study involves human participants but according to Finnish legislation, no ethical permission is needed for a questionnaire which includes only adults. Answering a self-administered questionnaire is a consent.

**Provenance and peer review** Not commissioned; externally peer reviewed.

**Data availability statement** No data available based on General Data Protection Regulation.

**Supplemental material** This content has been supplied by the author(s). It has not been vetted by BMJ Publishing Group Limited (BMJ) and may not have been peer-reviewed. Any opinions or recommendations discussed are solely those of the author(s) and are not endorsed by BMJ. BMJ disclaims all liability and responsibility arising from any reliance placed on the content. Where the content includes any translated material, BMJ does not warrant the accuracy and reliability of the translations (including but not limited to local regulations, clinical guidelines, terminology, drug names and drug dosages), and is not responsible for any error and/or omissions arising from translation and adaptation or otherwise.

**Open access** This is an open access article distributed in accordance with the Creative Commons Attribution Non Commercial (CC BY-NC 4.0) license, which permits others to distribute, remix, adapt, build upon this work non-commercially, and license their derivative works on different terms, provided the original work is properly cited, appropriate credit is given, any changes made indicated, and the use is non-commercial. See: <http://creativecommons.org/licenses/by-nc/4.0/>.

#### ORCID iDs

Anu W Turunen <http://orcid.org/0000-0002-4958-3599>

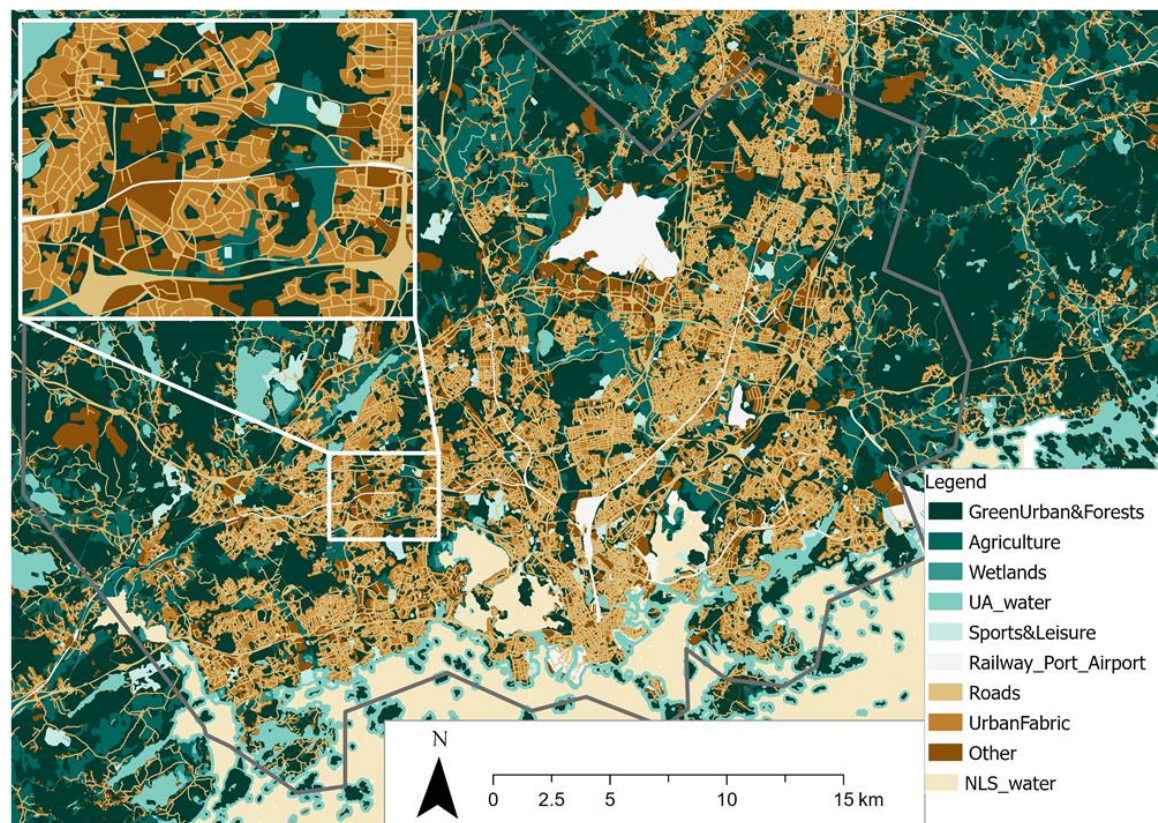
Jaana Halonen <http://orcid.org/0000-0003-1142-0388>

#### REFERENCES

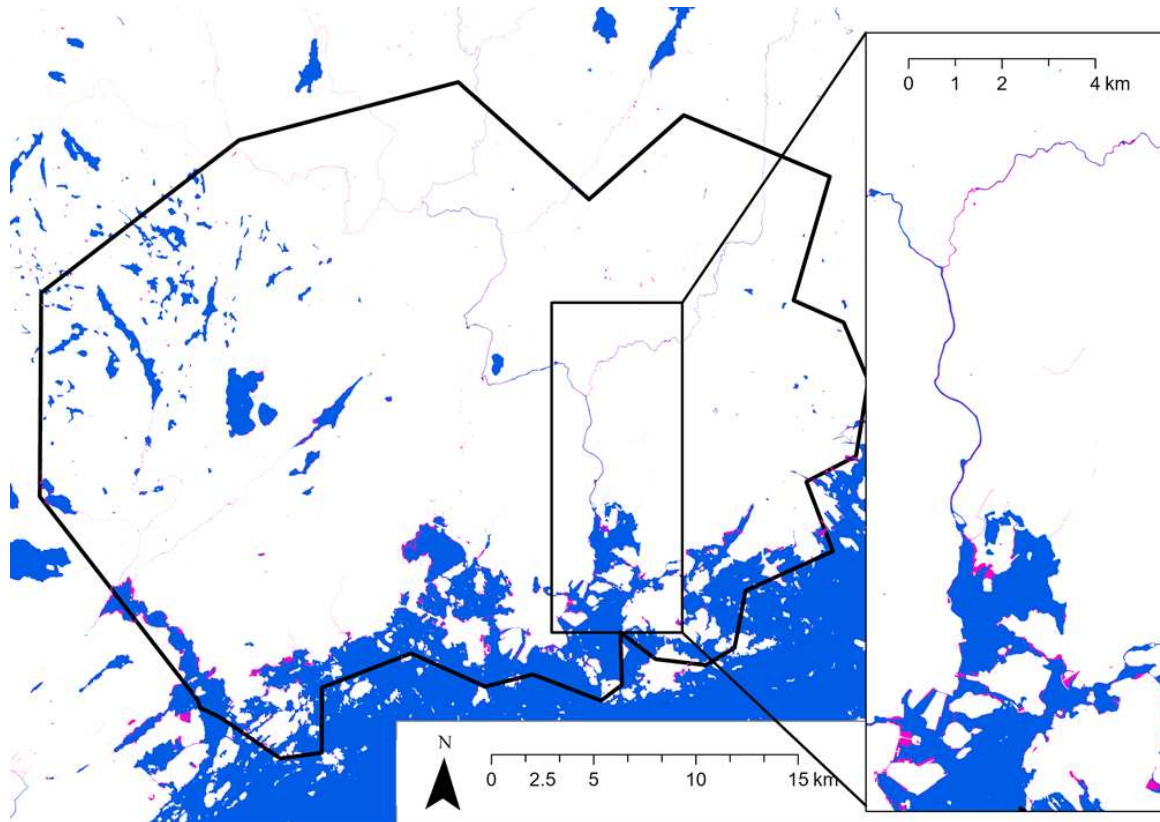
- 1 Nguyen P-Y, Astell-Burt T, Rahimi-Ardabili H, et al. Green space quality and health: a systematic review. *Int J Environ Res Public Health* 2021;18:11028.
- 2 Gascon M, Zijlema W, Vert C, et al. Outdoor blue spaces, human health and well-being: a systematic review of quantitative studies. *Int J Hyg Environ Health* 2017;220:1207–21.
- 3 Nieuwenhuijsen MJ, Khreis H, Triguero-Mas M, et al. Fifty shades of green: pathway to healthy urban living. *Epidemiology* 2017;28:63–71.
- 4 Hartig T, Mitchell R, de Vries S, et al. Nature and health. *Annu Rev Public Health* 2014;35:207–28.
- 5 Houlden V, Weich S, Porto de Albuquerque J, et al. The relationship between green space and the mental wellbeing of adults: a systematic review. *PLoS One* 2018;13:e0203000.
- 6 Liu X-X, Ma X-L, Huang W-Z, et al. Green space and cardiovascular disease: a systematic review with meta-analysis. *Environ Pollut* 2022;301:118990.
- 7 Jimenez MP, DeVille NV, Elliott EG, et al. Associations between nature exposure and health: a review of the evidence. *Int J Environ Res Public Health* 2021;18:4790.
- 8 Twohig-Bennett C, Jones A. The health benefits of the great outdoors: a systematic review and meta-analysis of greenspace exposure and health outcomes. *Environ Res* 2018;166:628–37.
- 9 Geneshka M, Coventry P, Cruz J, et al. Relationship between green and blue spaces with mental and physical health: a systematic review of longitudinal observational studies. *Int J Environ Res Public Health* 2021;18:9010.
- 10 Gianfredi V, Buffoli M, Rebecchi A, et al. Association between urban greenspace and health: a systematic review of literature. *Int J Environ Res Public Health* 2021;18:5137.
- 11 Fong KC, Hart JE, James P. A review of epidemiologic studies on greenness and health: updated literature through 2017. *Curr Environ Health Rep* 2018;5:77–87.
- 12 Kondo MC, Fluehr JM, McKeon T, et al. Urban green space and its impact on human health. *Int J Environ Res Public Health* 2018;15:445.
- 13 Aerts R, Dujardin S, Nemery B, et al. Residential green space and medication sales for childhood asthma: a longitudinal ecological study in Belgium. *Environ Res* 2020;189:109914.
- 14 Dadvand P, Villanueva CM, Font-Ribera L, et al. Risks and benefits of green spaces for children: a cross-sectional study of associations with sedentary behavior, obesity, asthma, and allergy. *Environ Health Perspect* 2014;122:1329–35.
- 15 Klompaker JO, Hoek G, Bloemsmas LD, et al. Green space definition affects associations of green space with overweight and physical activity. *Environ Res* 2018;160:531–40.
- 16 Ojala A, Korpela K, Tyrväinen L, et al. Restorative effects of urban green environments and the role of urban-nature orientedness and noise sensitivity: a field experiment. *Health Place* 2019;55:59–70.
- 17 Tester-Jones M, White MP, Elliott LR, et al. Results from an 18 country cross-sectional study examining experiences of nature for people with common mental health disorders. *Sci Rep* 2020;10:19408–9.
- 18 Markevych I, Schoierer J, Hartig T, et al. Exploring pathways linking greenspace to health: theoretical and methodological guidance. *Environ Res* 2017;158:301–17.
- 19 White MP, Pahl S, Wheeler BW, et al. Natural environments and subjective wellbeing: different types of exposure are associated with different aspects of wellbeing. *Health Place* 2017;45:77–84.
- 20 Nieuwenhuijsen MJ. Green infrastructure and health. *Annu Rev Public Health* 2021;42:317–28.
- 21 Braçe O, Garrido-Cumbrera M, Foley R, et al. Is a view of green spaces from home associated with a lower risk of anxiety and depression? *Int J Environ Res Public Health* 2020;17:7014.
- 22 de Bell S, Graham H, Jarvis S, et al. The importance of nature in mediating social and psychological benefits associated with visits to freshwater blue space. *Landsc Urban Plan* 2017;167:118–27.
- 23 Halonen JJ, Pulakka A, Pentti J, et al. Cross-sectional associations of neighbourhood socioeconomic disadvantage and greenness with accelerometer-measured leisure-time physical activity in a cohort of ageing workers. *BMJ Open* 2020;10:e038673.
- 24 Rigolon A, Browning MHEM, McAnirlin O, et al. Green space and health equity: a systematic review on the potential of green space to reduce health disparities. *Int J Environ Res Public Health* 2021;18:2563.
- 25 Okokon EO, Yli-Tuomi T, Turunen AW, et al. Traffic noise, noise annoyance and psychotropic medication use. *Environ Int* 2018;119:287–94.
- 26 European Union. *Mapping guide for a European urban atlas*. European Union, 2016. <https://land.copernicus.eu/user-corner/technical-library/urban-atlas-mapping-guide>
- 27 Smith G, Cirach M, Swart W, et al. Characterisation of the natural environment: quantitative indicators across Europe. *Int J Health Geogr* 2017;16:16-z.
- 28 Pasanen TP, White MP, Wheeler BW, et al. Neighbourhood blue space, health and wellbeing: the mediating role of different types of physical activity. *Environ Int* 2019;131:105016.
- 29 Hannuniemi H, Salmi J, Rasila T. Autoliikenteen, energiantuotannon, laivaliikenteen JA lentoliikenteen typenoksid-, pienhiukkas- JA rikkioksidipäästöjen leviämismallinnus. *Ilmatieteen Laitos* 2016.
- 30 Kukkonen J, Härkönen J, Walden J, et al. Evaluation of the CAR-FMI model against measurements near a major road. *Atmos Environ* 2001;35:949–60.
- 31 White MP, Elliott LR, Grellier J, et al. Associations between green/blue spaces and mental health across 18 countries. *Sci Rep* 2021;11:8903-0.
- 32 Noordzij JM, Beenackers MA, Oude Groeniger J, et al. Green spaces, subjective health and depressed affect in middle-aged and older adults: a cross-country comparison of four European cohorts. *J Epidemiol Community Health* 2021;75:470–6.
- 33 Gonzales-Inca C, Pentti J, Stenholm S, et al. Residential greenness and risks of depression: longitudinal associations with different greenness indicators and spatial scales in a Finnish population cohort. *Health Place* 2022;74:102760.
- 34 Gascon M, Sánchez-Benavides G, Dadvand P, et al. Long-term exposure to residential green and blue spaces and anxiety and depression in adults: a cross-sectional study. *Environ Res* 2018;162:231–9.
- 35 Bauwelinck M, Zijlema WL, Bartoll X, et al. Residential urban greenspace and hypertension: a comparative study in two European cities. *Environ Res* 2020;191:110032.
- 36 Moreira TCL, Polizel JL, Santos IdeS, et al. Green spaces, land cover, street trees and hypertension in the megacity of São Paulo. *Int J Environ Res Public Health* 2020;17:725.
- 37 De Roos AJ, Kenyon CC, Zhao Y, et al. Ambient daily pollen levels in association with asthma exacerbation among children in Philadelphia, Pennsylvania. *Environ Int* 2020;145:106138.
- 38 Dong Y, Liu H, Zheng T. Association between green space structure and the prevalence of asthma: a case study of Toronto. *Int J Environ Res Public Health* 2021;18:5852.
- 39 Peters U, Dixon AE, Forno E. Obesity and asthma. *J Allergy Clin Immunol* 2018;141:1169–79.
- 40 Pykä R, Neuvonen M, Kangas K, et al. Individual and environmental factors associated with green exercise in urban and suburban areas. *Health Place* 2019;55:20–8.
- 41 Holland I, DeVille NV, Browning MHEM, et al. Measuring nature contact: a narrative review. *Int J Environ Res Public Health* 2021;18:4092.
- 42 Neuvonen M, Lankia T, Kangas K, et al. Luonnon virkistyskäyttö 2020. Luonnonvara-JA biotalouden tutkimus 41/2022. *Luonnonvarakeskus*. In Press.
- 43 Pauleit S, Jones N, Nyhuus S, et al. Urban forest resources in European cities. In: Konijnendijk C, Nilsson K, Randrup T, et al, eds. *Urban forests and trees. A reference book.*: Springer-Verlag Berlin Heidelberg, 2005.
- 44 Kabisch N, Strohbach M, Haase D, et al. Urban green space availability in European cities. *Ecol Indic* 2016;70:586–96.
- 45 Maes J, Zulian G, Günther S. *Enhancing resilience of urban ecosystems through green infrastructure (EnRoute). final report Eur 29630 en*. European Union, 2019.
- 46 Cheung KL, Ten Klooster PM, Smit C, et al. The impact of non-response bias due to sampling in public health studies: a comparison of voluntary versus mandatory recruitment in a Dutch national survey on adolescent health. *BMC Public Health* 2017;17:276–8.
- 47 Connelly NA, Brown TL, Decker DJ. Factors affecting response rates to natural resource - focused mail surveys: Empirical evidence of declining rates over time. *Soc Nat Resour* 2003;16:541–9.
- 48 Harrison S, Alderdice F, Quigley MA. External validity of prevalence estimates from the national maternity surveys in England: the impact of response rate. *PLoS One* 2020;15:e0242815.



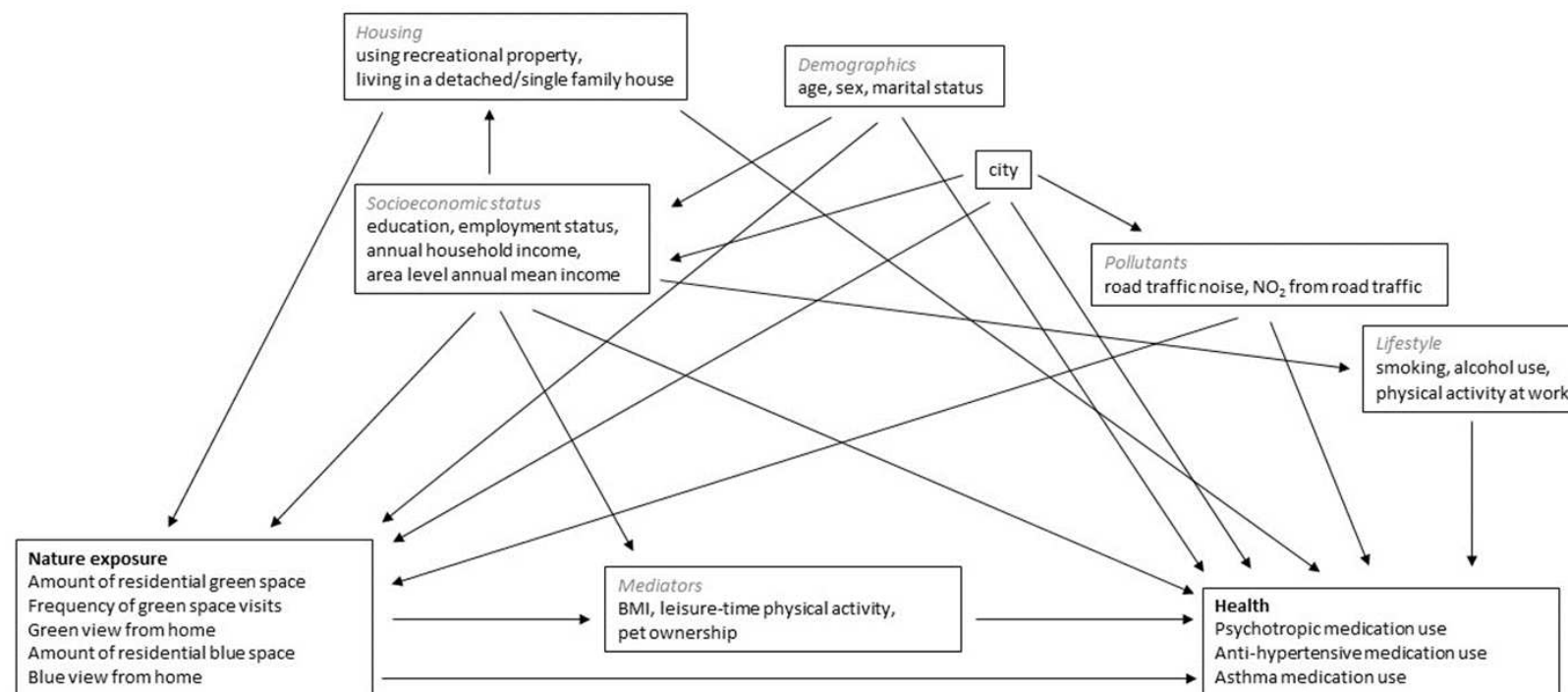
## Supplemental material



Supplemental Figure S1. Area covering the 1 km buffers for all questionnaire respondents (address available for  $n=7,316$ ) on top of a modified Urban Atlas map. Contains data from the Urban Atlas 2012 (European Union, Copernicus Land Monitoring Service 2012, European Environment Agency (EEA)) and the National Land Survey of Finland Topographic Database 12/2015 (water areas that are not included in the Urban Atlas 2012).



Supplemental Figure S2. Comparison between the calculated water class and water from the topographic database (11/2018) of National Land Survey of Finland in the area covering the 1 km buffers around the homes (black line). Pink areas are classified in other classes than water in the Urban Atlas 2012. Visual inspection of satellite images reveals that most of these areas are not open water, but wetlands. Contains data from the Urban Atlas 2012 (European Union, Copernicus Land Monitoring Service 2012, European Environment Agency (EEA)) and the National Land Survey of Finland Topographic Database 12/2015.



Supplemental Figure S3. Simplified directed acyclic graph for the association between nature exposure and medication use. Some variables have been grouped for readability. All potential associations between covariates have not been marked.

Supplemental Table S1. Pearson correlation coefficients between continuous exposures and SES indicators ( $n=5,987$ ).

	Amount of residential green space	Amount of residential blue space	Traffic noise	NO <sub>2</sub> from road traffic	Area level annual mean income
Amount of residential blue space	-0.31	1			
Road traffic noise	-0.12	-0.16	1		
NO <sub>2</sub> from road traffic	-0.26	-0.10	0.49	1	
Area level annual mean income	-0.08	0.37	-0.05	-0.08	1
Area level unemployment rate	-0.07	-0.17	-0.03	0.01	-0.72

Supplemental Table S2. Continuous exposures, SES indicators, and BMI by the categories of green space visits ( $n=5,886$ ).

	Frequency of green space visits							
	Never or less than once per week, $n=1,014$		1–2 times/week, $n=1,917$		3–4 times/week, $n=1,712$		≥5 times/week, $n=1,243$	
	Mean	SD	Mean	SD	Mean	SD	Mean	SD
Amount of residential green space, % <sup>a</sup>	24	12	25	11	25	11	26	11
Amount of residential blue space, % <sup>a</sup>	4.4	9.9	4.6	10	4.6	9.8	4.7	10
Road traffic noise, dB <sup>b</sup>	58	16	58	15	58	14	57	14
NO <sub>2</sub> from road traffic, µg/m <sup>3</sup>	7.4	4.5	7.3	4.3	7.3	4.4	7.0	4.1
Area level annual mean income, 1,000 €	27	6.1	27	5.6	28	6.1	28	6.5
Area level unemployment rate, %	6.1	1.7	6.0	1.6	5.9	1.6	5.8	1.6
Body mass index	27	5.7	26	4.4	25	4.0	25	4.0

<sup>a</sup> Within a 1 km radius around the respondent's home<sup>b</sup> Average sound pressure in decibels

Supplemental Table S3. Continuous exposures and SES indicators by the categories of green view from home ( $n=5,939$ ).

	Green view from home					
	No, $n=1,397$		Yes, I look at it seldom or occasionally, $n=1,800$		Yes, I look at it often, $n=2,742$	
	Mean	SD	Mean	SD	Mean	SD
Amount of residential green space, % <sup>a</sup>	22	11	25	11	26	11
Amount of residential blue space, % <sup>a</sup>	4.4	9.4	4.6	10	4.6	9.8
Road traffic noise, dB <sup>b</sup>	59	15	57	14	57	14
NO <sub>2</sub> from road traffic, $\mu\text{g}/\text{m}^3$	8.3	4.8	7.4	4.3	6.7	4.0
Area level annual mean income, 1,000 €	28	6.1	27	5.5	28	6.2
Area level unemployment rate, %	6.0	1.6	6.1	1.6	5.9	1.6

<sup>a</sup> Within a 1 km radius around the respondent's home<sup>b</sup> Average sound pressure in decibelsSupplemental Table S4. Continuous exposures and SES indicators by education ( $n=5,987$ ).

	Education							
	Comprehensive school, $n=803$		Vocational or high school, $n=1,378$		College or university of applied sciences, $n=1,926$		University, $n=1,880$	
	Mean	SD	Mean	SD	Mean	SD	Mean	SD
Amount of residential green space, % <sup>a</sup>	26	10	25	11	26	12	23	11
Amount of residential blue space, % <sup>a</sup>	3.2	7.7	4.0	9.3	3.9	9.0	6.2	12
Road traffic noise, dB <sup>b</sup>	57	14	58	15	58	15	57	14
NO <sub>2</sub> from road traffic, $\mu\text{g}/\text{m}^3$	6.8	4.0	7.0	4.2	7.2	4.3	7.8	4.5
Area level annual mean income, 1,000 €	26	4.7	26	4.9	27	5.6	29	7.1
Area level unemployment rate, %	6.4	1.6	6.2	1.6	6.0	1.6	5.6	1.5

<sup>a</sup> Within a 1 km radius around the respondent's home<sup>b</sup> Average sound pressure in decibels

Supplemental Table S5. Continuous exposures and SES indicators by annual household income (N=5,987).

	Annual household income							
	≤30 000 €, n=1,462		>30–50 000 €, n=1,527		>50–90 000 €, n=1,899		>90 000 €, n=1,099	
	Mean	SD	Mean	SD	Mean	SD	Mean	SD
Amount of residential green space, % <sup>a</sup>	25	11	25	11	25	12	25	12
Amount of residential blue space, % <sup>a</sup>	3.8	8.3	4.1	9.2	4.3	9.5	6.5	13
Road traffic noise, dB <sup>b</sup>	58	15	57	14	58	14	56	14
NO <sub>2</sub> from road traffic, µg/m <sup>3</sup>	7.9	4.6	7.3	4.2	7.3	4.3	6.5	4.0
Area level annual mean income, 1,000 €	26	5.2	27	5.2	28	5.9	30	7.2
Area level unemployment rate, %	6.4	1.6	6.2	1.6	5.8	1.6	5.3	1.4

<sup>a</sup> Within a 1 km radius around the respondent's home

<sup>b</sup> Average sound pressure in decibels

Supplemental Table S6. Categorical exposures and SES indicators and free-time physical activity by the categories of green space visits.

	Frequency of green space visits							
	Never or less than once per week		1–2 times/week		3–4 times/week		≥5 times/week	
	<i>n</i>	%	<i>n</i>	%	<i>n</i>	%	<i>n</i>	%
<b>Green view from home, <i>n</i>=5,844</b>								
No	311	31	473	25	373	22	228	18
Yes, I look at it seldom or occasionally	359	36	628	33	470	28	311	25
Yes, I look at it often	338	34	795	42	858	50	700	57
<i>Total</i>	<i>1,008</i>	<i>100</i>	<i>1,896</i>	<i>100</i>	<i>1,701</i>	<i>100</i>	<i>1,239</i>	<i>100</i>
<b>Education, <i>n</i>=5,886</b>								
Comprehensive school	187	18	227	12	198	11	157	13
Vocational or high school	268	27	444	23	354	21	284	23
College or university of applied sciences	301	30	618	32	564	33	421	34
University	258	25	628	33	596	35	381	30
<i>Total</i>	<i>1,014</i>	<i>100</i>	<i>1,917</i>	<i>100</i>	<i>1,712</i>	<i>100</i>	<i>1,243</i>	<i>100</i>
<b>Annual household income, <i>n</i>=5,886</b>								
≤30 000 €	300	29	433	23	375	22	306	24
>30–50 000 €	260	26	490	26	450	26	294	24
>50–90 000 €	293	29	623	32	544	32	423	34
>90 000 €	161	16	371	19	343	20	220	18
<i>Total</i>	<i>1,014</i>	<i>100</i>	<i>1,917</i>	<i>100</i>	<i>1,712</i>	<i>100</i>	<i>1,243</i>	<i>100</i>
<b>Leisure-time physical activity, <i>n</i>=5,860</b>								
Never or less than once per week	497	49	338	18	147	9	136	11
1–2 times per week	259	26	920	48	460	27	293	24
≥3 times per week	249	25	648	34	1102	64	811	65
<i>Total</i>	<i>1,005</i>	<i>100</i>	<i>1,906</i>	<i>100</i>	<i>1,709</i>	<i>100</i>	<i>1,240</i>	<i>100</i>

Supplemental Table S7. Categorical SES variables by the categories of green view from home.

	Green view from home					
	No		Yes, I look at it seldom or occasionally		Yes, I look at it often	
	<i>n</i>	%	<i>n</i>	%	<i>n</i>	%
<b>Education, <i>n</i>=5,939</b>						
Comprehensive school	147	11	236	13	408	15
Vocational or high school	330	23	439	24	594	22
College or university of applied sciences	460	33	579	32	876	32
University	460	33	546	31	864	31
<i>Total</i>	<i>1,397</i>	<i>100</i>	<i>1,800</i>	<i>100</i>	<i>2,742</i>	<i>100</i>
<b>Annual household income, <i>n</i>=5,939</b>						
≤30 000 €	368	26	400	22	671	25
>30–50 000 €	355	26	477	27	687	25
>50–90 000 €	436	31	593	33	857	31
>90 000 €	238	17	330	18	527	19
<i>Total</i>	<i>1,397</i>	<i>100</i>	<i>1,800</i>	<i>100</i>	<i>2,742</i>	<i>100</i>



Supplemental Table S8. Stratified analysis by SES indicators (performed when the *P*-value for the interaction term was <0.1).

	Model 3 <sup>a</sup>		Model 3 <sup>a</sup>		Model 3 <sup>a</sup>	
	OR	95% CI	OR	95% CI	OR	95% CI
<b>PSYCHOTROPIC MEDICATION USE</b>						
	Annual household income, ≤30,000 € <i>n</i> =1,414		Annual household income, >30–90,000 € <i>n</i> =3,377		Annual household income, >90,000 € <i>n</i> =1,095	
<b>Frequency of green space visits</b>						
Never/less than once per week	ref	ref	ref		ref	ref
1–2 times/week	0.70	0.50–0.97	0.73	0.56–0.96	1.51	0.89–2.56
3–4 times/week	0.52	0.36–0.73	0.72	0.55–0.95	1.00	0.57–1.74
≥5 times/week	0.60	0.41–0.87	0.85	0.63–1.13	1.18	0.64–1.15
	Comprehensive/vocational/high school <i>n</i> =2,181		College/polytechnic <i>n</i> =1,926		Academic training <i>n</i> =1,880	
<b>Amount of residential blue space<sup>b</sup></b>						
0%	ref	ref	ref		ref	ref
>0–10%	1.33	1.05–1.68	0.79	0.60–1.03	1.26	0.95–1.67
>10%	1.06	0.76–1.49	1.01	0.70–1.46	1.07	0.77–1.50
	Area level unemployment rate, 1 <sup>st</sup> tertile <i>n</i> =2,054		Area level unemployment rate, 2 <sup>nd</sup> tertile <i>n</i> =1,902		Area level unemployment rate, 3 <sup>rd</sup> tertile <i>n</i> =2,031	
<b>Amount of residential of blue space<sup>b</sup></b>						
0%	ref	ref	ref		ref	ref
>0–10%	1.03	0.79–1.36	1.12	0.86–1.46	1.11	0.87–1.42
>10%	1.28	0.96–1.71	1.04	0.70–1.54	0.69	0.47–1.02
<b>ANTIHYPERTENSIVE MEDICATION USE</b>						
	Area level annual mean income, 1 <sup>st</sup> tertile <i>n</i> =1,940		Area level annual mean income, 2 <sup>nd</sup> tertile <i>n</i> =2,049		Area level annual mean income, 3 <sup>rd</sup> tertile <i>n</i> =1,993	
<b>Green view from home</b>						
No	ref	ref	ref		ref	ref
Yes, I look at it seldom/occasionally	1.47	1.05–2.09	1.22	0.88–1.68	0.72	0.50–1.02
Yes, I look at it often	1.08	0.78–1.50	0.96	0.71–1.30	0.88	0.64–1.20

	Area level unemployment rate, 1 <sup>st</sup> tertile <i>n</i> =2,052		Area level unemployment rate, 2 <sup>nd</sup> tertile <i>n</i> =1,902		Area level unemployment rate, 3 <sup>rd</sup> tertile <i>n</i> =2,028	
<b>Green view from home</b>						
No	ref	ref	ref	ref	ref	ref
Yes, I look at it seldom/occasionally	0.77	0.54–1.10	1.15	0.81–1.62	1.37	0.99–1.89
Yes, I look at it often	0.87	0.64–1.19	1.03	0.75–1.43	0.96	0.71–1.30
	Area level annual mean income, 1 <sup>st</sup> tertile <i>n</i> =1,959		Area level annual mean income, 2 <sup>nd</sup> tertile <i>n</i> =2,064		Area level annual mean income, 3 <sup>rd</sup> tertile <i>n</i> =2,008	
<b>Amount of residential green space<sup>b</sup></b>	1.01	1.00–1.02	0.99	0.98–1.00	1.00	0.99–1.01
<b>ASTHMA MEDICATION USE</b>						
	Area level unemployment rate, 1 <sup>st</sup> tertile <i>n</i> =2,056		Area level unemployment rate, 2 <sup>nd</sup> tertile <i>n</i> =1,896		Area level unemployment rate, 3 <sup>rd</sup> tertile <i>n</i> =2,031	
<b>Amount of residential blue space</b>						
0%	ref	ref	ref		ref	ref
>0–10%	0.77	0.54–1.10	1.55	1.13–2.11	0.88	0.66–1.19
>10%	0.89	0.61–1.30	1.17	0.73–1.89	0.89	0.58–1.38

<sup>a</sup> Model 3 (main) adjusted for age, sex, marital status, education, employment status, annual household income, smoking, alcohol use, physical activity at work, using recreational property during warm season, area level annual mean income, road traffic noise, and NO<sub>2</sub> from car traffic.

<sup>b</sup> Within a 1 km radius around the respondent's home

Supplemental Table S9. The effect of BMI and leisure-time physical activity to the observed associations.

	Model 3 <sup>a</sup>		Model 3 <sup>a</sup> + BMI		Model 3 <sup>a</sup> + leisure-time physical activity	
	OR	95% CI	OR	95% CI	OR	95% CI
<b>PSYCHOTROPIC MEDICATION USE</b>						
<b>Frequency of green space visits</b>		<i>n</i> =5,886		<i>n</i> =5,800		<i>n</i> =5,860
Never/less than once per week	ref	ref	ref	ref	ref	ref
1–2 times/week	0.80	0.66–0.97	0.81	0.66–0.98	0.84	0.69–1.03
3–4 times/week	0.67	0.55–0.82	0.70	0.57–0.85	0.71	0.57–0.87
≥5 times/week	0.78	0.63–0.96	0.80	0.65–0.99	0.81	0.65–1.01
<b>ANTIHYPERTENSIVE MEDICATION USE</b>						
<b>Frequency of green space visits</b>		<i>n</i> =5,928		<i>n</i> =5,840		<i>n</i> =5,900
Never/less than once per week	ref	ref	ref	ref	ref	ref
1–2 times/week	0.84	0.69–1.02	0.98	0.80–1.21	0.84	0.69–1.03
3–4 times/week	0.64	0.52–0.78	0.82	0.67–1.02	0.70	0.57–0.87
≥5 times/week	0.59	0.48–0.74	0.80	0.64–1.01	0.65	0.52–0.82
<b>ASTHMA MEDICATION USE</b>						
<b>Frequency of green space visits</b>		<i>n</i> =5,983		<i>n</i> =5,796		<i>n</i> =5,857
Never/less than once per week	ref	ref	ref	ref	ref	ref
1–2 times/week	0.85	0.68–1.07	0.92	0.73–1.17	0.85	0.67–1.09
3–4 times/week	0.74	0.58–0.94	0.83	0.65–1.06	0.76	0.58–0.98
≥5 times/week	0.76	0.59–0.99	0.88	0.67–1.15	0.78	0.59–1.03

<sup>a</sup> Model 3 (main) adjusted for age, sex, marital status, education, employment status, annual household income, smoking, alcohol use, physical activity at work, using recreational property during warm season, area level annual mean income, road traffic noise, and NO<sub>2</sub> from road traffic.