

Supplement: Subgroup analyses report

Abbrev.: IBBIS: Integreret Behandlings- og BeskaeftigelsesIndsats til Sygedagpengemodtagere (English translation: Integrated Health Care and Vocational Rehabilitation for Sick Leave Benefit Recipients); HR: Hazard Ratio; INT: Integrated intervention; MHC: Mental health care; RCT: Randomized controlled trial; RTW: Return to work; SAU: Service as usual; OR: Odds Ratio; RR: Relative risk; FUn: n-month follow-up

Table legends: “Est.”: Estimate “p”: p-value “low/high CI”: Low vs. high bounds of the 98.3% Confidence Interval of the estimate.

Subgroup abbrev.:

The following abbreviations reflects subgroups including only participants with following characteristics:

- “depr”: Depression,
- “anx”: Anxiety,
- “emp”: Employment (at baseline),
- “vac”: Unemployed (at baseline),
- “north”: Team North,
- “city”: Team City (Copenhagen),
- “first”: All participants randomized in the first temporal half of the RCT,
- “last”: All participants randomized in the last temporal half of the RCT,
- “interaction”: Analyses adjusted for the diagnosis x treatment arm interaction
- “intempl”: Analyses adjusted for the employment status (employed vs uempl.) x treatment arm interaction
- “intteam”: Analyses adjusted for the intervention-team (Team North vs. City) x treatment arm interaction
- “inttemp”: Analyses adjusted for the time (first vs. last trial period half) x treatment arm interaction

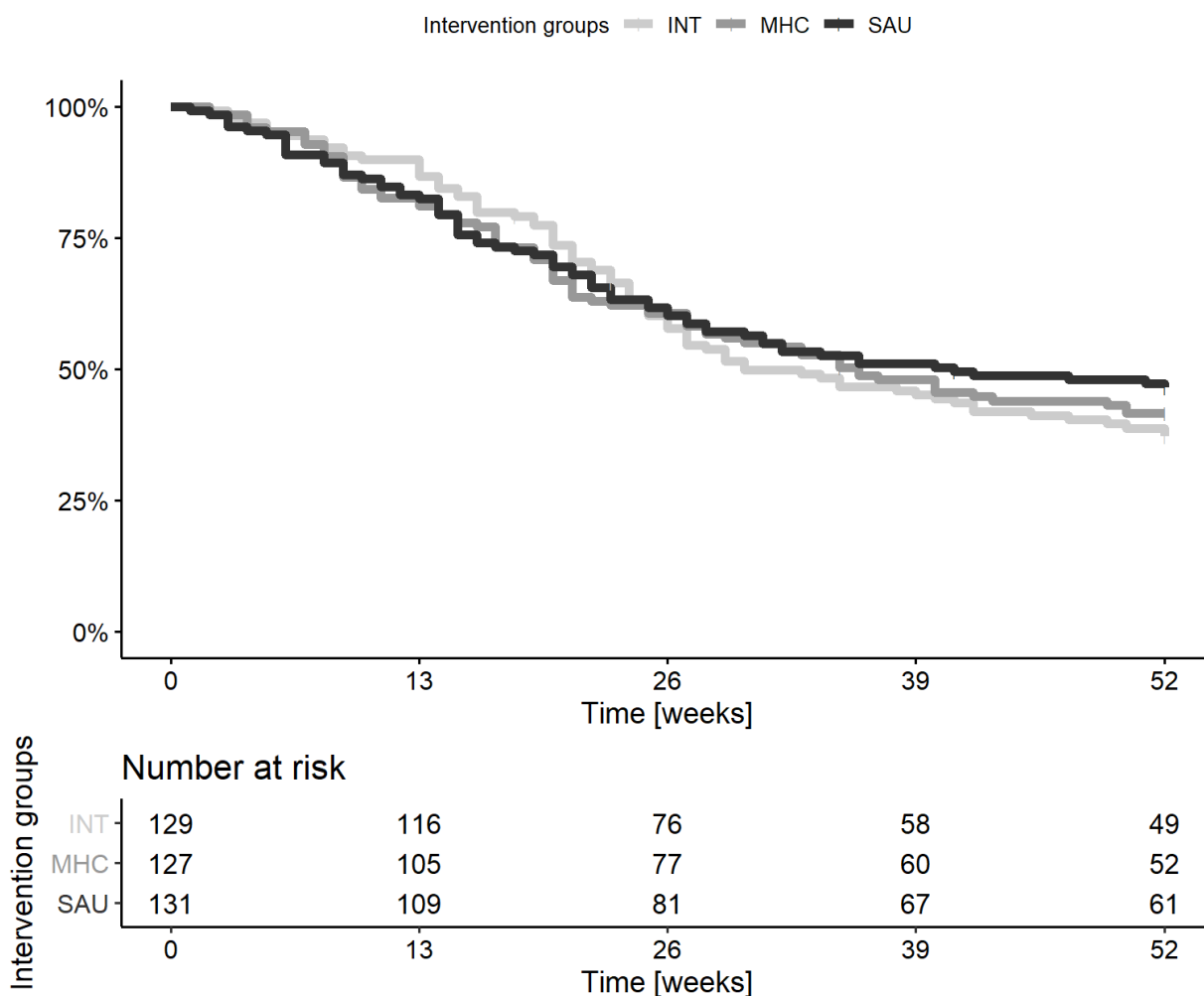
Legend: *: $0,05 > p > 0,016667$ | **: $p < 0,016667$

This report chapter systematically displays all results from the IBBIS RCT trial covering diagnoses of anxiety and depression.

Analyses regarding: >depr<

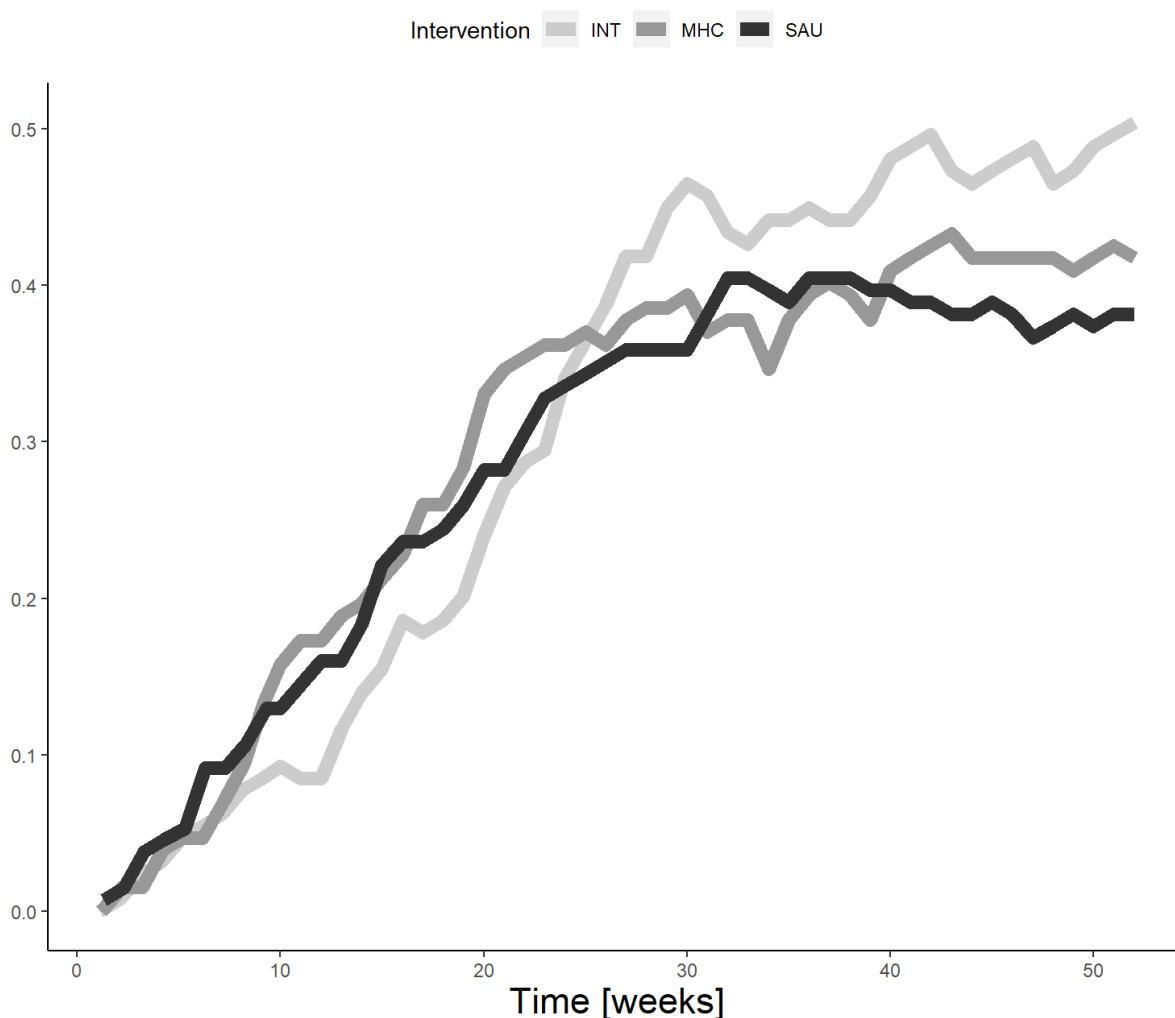
Kaplan Meier-curve at 12-month follow-up regarding: depr

Time to stable return-to-work



Proportion over time-curve at 12-month follow-up regarding: depr<

Proportion in stable work, per week



Vocational outcomes at 12-month follow-up from subgroup >depr< in RCT1

	Group values			SAU-MHC			SAU-INT			MHC-INT		
	INT	MHC	SAU	Est.	p	low CI:high CI	Est.	p	low CI:high CI	Est.	p	low CI:high CI
RTW, FU12 [weeks, HR]	30.0	36.0	41.0	0.90	0.54	0.60 1.35	0.87	0.41	0.59 1.30	0.96	0.80	0.65 1.42
RTW, FU6 [HR]				1.00	0.98	0.62 1.61	0.99	0.95	0.62 1.58	1.00	0.99	0.62 1.60
PROP, FU12 [% , OR]	51.6	42.1	38.5	0.86	0.55	0.45 1.61	0.56	*0.0305	0.30 1.07	0.66	0.12	0.35 1.25
WEEKS, FU12 [weeks, RR]	16.4	15.9	15.2	0.95	0.68	0.70 1.29	0.93	0.54	0.68 1.25	0.98	0.86	0.73 1.32

Self-reported outcomes at 6- and 12-month follow-up regarding: depr

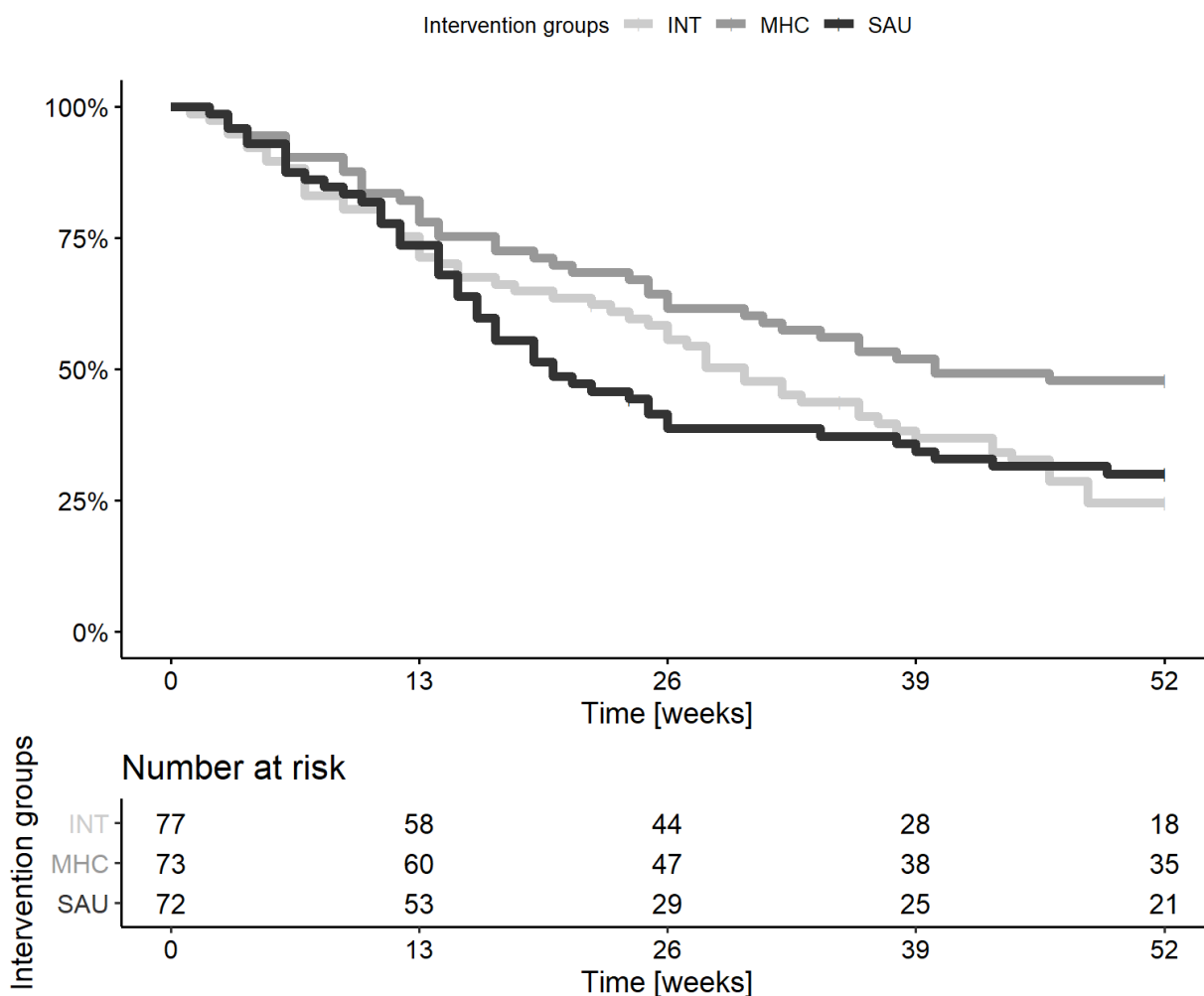
	Group values			SAU-MHC				SAU-INT				MHC-INT			
	INT (SD)	MHC (SD)	SAU (SD)	Est.	p	low CI	high CI	Est.	p	low CI	high CI	Est.	p	low CI	high CI
BAI [FU6]	12.66 (9.01)	12.06 (9.2)	14.18 (9.51)	1.76	0.16	-1.22	4.74	1.07	0.38	-1.85	4	-0.68	0.57	-3.57	2.21
BDI [FU6]	13.48 (9.45)	14.27 (9.96)	16.12(11.58)	1.48	0.25	-1.6	4.56	1.9	0.14	-1.17	4.98	0.49	0.68	-2.43	3.42
PSS [FU6]	16.86 (7.85)	16.65 (6.97)	18.76 (7.3)	1.69	*0.0446	-0.33	3.71	1.52	0.09	-0.63	3.67	-0.18	0.84	-2.27	1.91
KES [FU6]	66.79(18.36)	68.79(18.91)	71.61(19.13)	2.51	0.2	-2.19	7.21	3.99	*0.0432	-0.74	8.73	1.52	0.45	-3.33	6.37
DSQ-som. [FU6]	8.7 (6.2)	9.46 (7.13)	10.54 (7.06)	0.95	0.29	-1.2	3.11	1.33	0.12	-0.7	3.36	0.4	0.66	-1.76	2.55
DSQ-distr. [FU6]	13.38 (8.03)	14.49 (7.88)	15.01 (8.84)	0.61	0.5	-1.59	2.82	1.58	0.09	-0.66	3.82	0.98	0.28	-1.18	3.15

	Group values			SAU-MHC				SAU-INT				MHC-INT			
	INT (SD)	MHC (SD)	SAU (SD)	Est.	p	low CI	high CI	Est.	p	low CI	high CI	Est.	p	low CI	high CI
DSQ-anx. [FU6]	3.51 (4.48)	3.65 (4.73)	4.63 (5.64)	0.97		0.17	-0.71 2.65	0.91		0.2	-0.78 2.6	-0.05		0.94	-1.68 1.58
DSQ-depr. [FU6]	1.8 (2.67)	2.14 (2.65)	3.01 (3.54)	0.61		0.14	-0.38 1.59	0.95	*0.02	0.05	-0.03 1.93	0.36		0.37	-0.6 1.32
WSAS [FU6]	14.83(10.46)	15.94(10.72)	16.73(10.73)	0.49		0.68	-2.39 3.38	1.43		0.24	-1.48 4.35	0.96		0.42	-1.88 3.8
SPS [FU6]	19.65 (2.95)	19.53 (2.8)	19.61 (3.96)	0.14		0.65	-0.61 0.89	0.12		0.69	-0.6 0.84	-0.02		0.93	-0.69 0.64
IPQ [FU6]	16.81 (3.35)	16.49 (3.85)	15.58 (3.81)	-0.7		0.15	-1.88 0.47	-1.11	*0.01	0.185	-2.24 0.02	-0.39		0.42	-1.53 0.76
GSS [FU6]	26.26 (7.08)	25.68 (6.88)	25.28 (6.66)	-0.37		0.67	-2.47 1.73	-0.97		0.27	-3.1 1.15	-0.63		0.48	-2.77 1.51
RTW-SE [FU6]	25.12 (9.74)	23.16 (9.44)	22.5 (9.94)	-0.32		0.77	-2.9 2.26	-2.15	*0.04	0.85	-4.76 0.46	-1.84		0.09	-4.42 0.75
QoLs [FU6]	68.79(15.21)	69.15(14.76)	66.79(16.23)	-1.78		0.32	-6.12 2.55	-1.39		0.44	-5.77 2.99	0.26		0.89	-4.14 4.65
EQ5 [FU6]	0.78 (0.15)	0.78 (0.14)	0.76 (0.16)	-0.02		0.32	-0.07 0.03	-0.02		0.38	-0.06 0.03	0		0.92	-0.05 0.05
IS [FU6]	26.76 (4.48)	24.85 (5.18)	20.45 (5.8)	-3.24	**1e-04	-5.14	-1.34	-4.83	**0	-6.66	-3.01	-1.63	*0.02	11	-3.32 0.06
BAI [FU12]	12.56 (9.77)	10.73 (8.49)	11.8 (8.78)	1.27		0.3	-1.68 4.21	-0.02		0.99	-2.88 2.84	-1.27		0.29	-4.15 1.61
BDI [FU12]	13.15(11.47)	12.29(10.47)	13.66(12.01)	1.19		0.38	-2.07 4.46	0.78		0.56	-2.42 3.98	-0.34		0.79	-3.44 2.76
PSS [FU12]	16.58 (7.96)	15.84 (7.46)	15.97 (7.73)	0.41		0.66	-1.88 2.71	-0.02		0.98	-2.29 2.25	-0.45		0.64	-2.74 1.84
KES [FU12]	60.53(18.97)	59.11(19.93)	62.65(20.68)	2.65		0.24	-2.71 8.02	1.05		0.63	-4.17 6.28	-1.58		0.47	-6.81 3.64
DSQ-som. [FU12]	10.54 (7.41)	9.36 (6.57)	9.32 (6.72)	0.25		0.78	-1.92 2.42	-0.52		0.54	-2.58 1.53	-0.75		0.39	-2.85 1.35
DSQ-distr. [FU12]	13.66 (8.32)	13.29 (8.06)	13.59 (8.96)	0.16		0.87	-2.2 2.52	0.02		0.98	-2.35 2.39	-0.13		0.89	-2.42 2.16
DSQ-anx. [FU12]	3.43 (4.52)	2.94 (4.31)	3.53 (4.97)	0.65		0.34	-0.97 2.28	0.23		0.73	-1.4 1.86	-0.42		0.52	-1.99 1.14
DSQ-depr. [FU12]	1.9 (2.75)	1.99 (2.38)	2.44 (3.56)	0.41		0.31	-0.56 1.39	0.38		0.34	-0.59 1.36	-0.01		0.97	-0.94 0.91
WSAS [FU12]	13.8(10.44)	12.2 (10.4)	13.62(11.08)	0.99		0.44	-2.11 4.08	0.17		0.89	-2.89 3.23	-0.8		0.53	-3.86 2.27
SPS [FU12]	20.21 (3.1)	19.95 (3.1)	19.64 (3.7)	0.02		0.96	-0.92 0.96	-0.37		0.32	-1.26 0.52	-0.37		0.29	-1.22 0.47
IPQ [FU12]	16.51 (4.31)	16.58 (4.02)	15.94 (4.2)	-0.45		0.38	-1.7 0.79	-0.56		0.28	-1.79 0.68	-0.08		0.87	-1.33 1.16
GSS [FU12]	27.51 (6.83)	27.88 (7.09)	27.01 (8.11)	-0.72		0.45	-3.03 1.58	-0.67		0.49	-2.96 1.63	0.03		0.97	-2.14 2.21
RTW-SE [FU12]	26.79 (9.85)	26.27 (9.44)	26.27 (9.9)	-0.34		0.76	-3.1 2.41	-0.75		0.52	-3.54 2.04	-0.42		0.71	-3.13 2.28
QoLs [FU12]	71.17(16.22)	72.17(15.12)	70.52(17.55)	-1.59		0.41	-6.27 3.08	-0.37		0.85	-5.18 4.43	1.15		0.55	-3.52 5.83
EQ5 [FU12]	0.77 (0.17)	0.78 (0.16)	0.79 (0.18)	-0.01		0.8	-0.05 0.04	0.01		0.81	-0.05 0.06	0.01		0.61	-0.04 0.06

Analyses regarding: >anx<

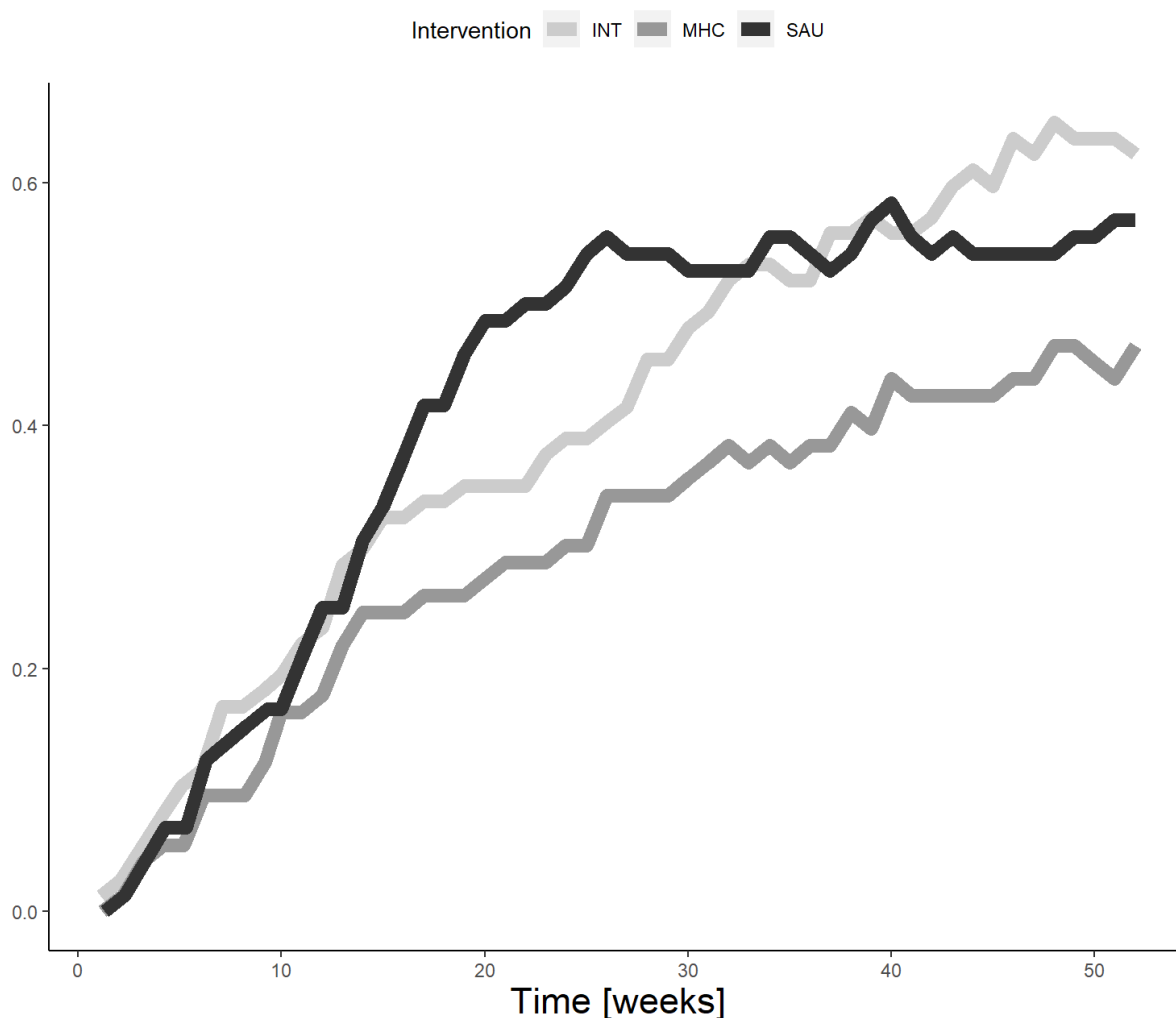
Kaplan Meier-curve at 12-month follow-up regarding: anx

Time to stable return-to-work



Proportion over time-curve at 12-month follow-up regarding: anx<

Proportion in stable work, per week



Vocational outcomes at 12-month follow-up from subgroup >anx< in RCT1

	Group values			SAU-MHC				SAU-INT				MHC-INT				
	INT	MHC	SAU	Est.	p	low CI	high CI	Est.	p	low CI	high CI	Est.	p	low CI	high CI	
RTW, FU12 [weeks, HR]	30.0	40.0	20.0	1.65	*0.0199	0.98	2.79	1.04	0.83	0.65	1.67	0.62	*0.0259	0.37	1.04	
RTW, FU6 [HR]				1.89	**0.0088	1.05	3.40	1.54	0.06	0.88	2.69	0.85		0.53	0.46	1.58
PROP, FU12 [% , OR]	64.0	46.6	56.9	1.59		0.18	0.69	0.75	0.41	0.33	1.73	0.46	*0.0282	0.20	1.08	
WEEKS, FU12 [weeks, RR]	21.4	15.8	22.1	1.42	*0.028	0.96	2.09	1.03	0.83	0.74	1.42	0.73		0.05	0.50	1.08

Self-reported outcomes at 6- and 12-month follow-up regarding: anx

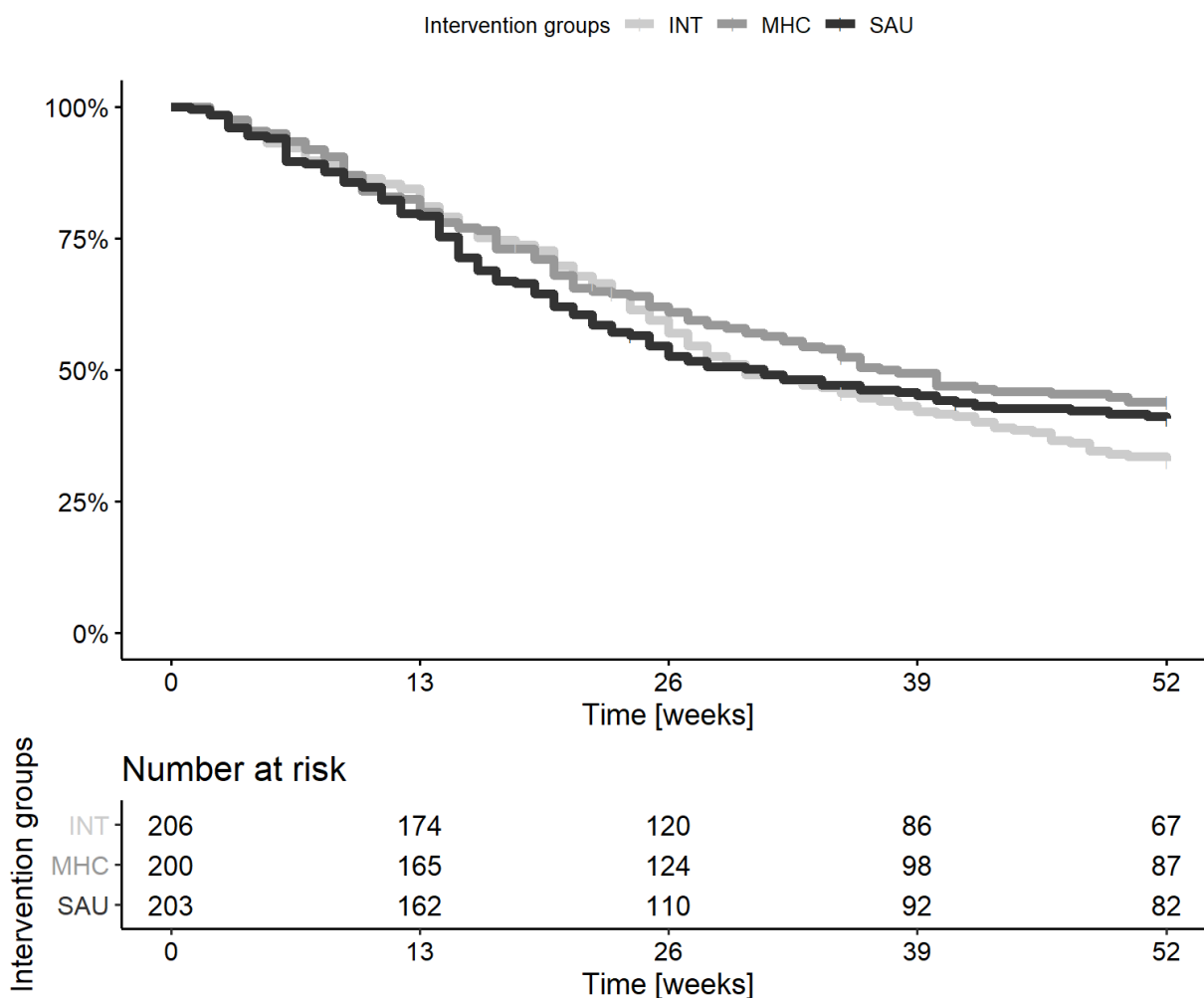
	Group values			SAU-MHC				SAU-INT				MHC-INT					
	INT (SD)	MHC (SD)	SAU (SD)	Est.	p	low CI	high CI	Est.	p	low CI	high CI	Est.	p	low CI	high CI		
BAI [FU6]	12.44 (7.9)	14.2 (8.73)	14.16 (9.31)	0.24		0.88	-3.54	4.01	1.81	0.22	-1.76	5.38	1.6		0.26	-1.78	4.98
BDI [FU6]	11.02 (8.19)	10.58 (9.18)	11.63 (9.73)	1.1		0.5	-2.79	5	0.55	0.72	-3.09	4.18	-0.59		0.69	-4.11	2.93
PSS [FU6]	15.99 (6.64)	15.83 (7.14)	17.63 (7.39)	1.67		0.14	-1.04	4.37	1.44	0.17	-1.1	3.97	-0.26		0.8	-2.67	2.16
KES [FU6]	64.31(16.96)	65.28(16.06)	67.22(18.13)	1.44		0.59	-4.94	7.81	3.03	0.26	-3.37	9.43	1.63		0.5	-4.19	7.45
DSQ-som. [FU6]	10.02 (6.29)	9.3 (5.46)	9.44 (6.13)	0.39		0.72	-2.21	3	-0.36	0.74	-2.99	2.28	-0.67		0.51	-3.12	1.78

	Group values			SAU-MHC			SAU-INT			MHC-INT							
	INT (SD)	MHC (SD)	SAU (SD)	Est.	p	low CI	high CI	Est.	p	low CI	high CI	Est.	p	low CI	high CI		
DSQ-distr. [FU6]	12.51 (7.63)	12.55 (7.4)	12.84 (8.06)	-0.07	0.96	-3.03	2.89	-0.18	0.88	-3.15	2.79	-0.05		0.97	-2.81	2.72	
DSQ-anx. [FU6]	4.46 (4.81)	5.29 (5.24)	4.27 (4.73)	-0.72	0.44	-2.98	1.54	0.03	0.97	-2.12	2.19	0.82		0.35	-1.31	2.94	
DSQ-depr. [FU6]	1.61 (2.54)	1.35 (2.55)	2.03 (3)	0.57	0.23	-0.57	1.71	0.19	0.69	-0.97	1.36	-0.36		0.43	-1.44	0.73	
WSAS [FU6]	11.32 (8.8)	13.4(10.32)	12.22(10.15)	-0.96	0.54	-4.75	2.84	0.89	0.55	-2.69	4.48	1.78		0.22	-1.7	5.26	
SPS [FU6]	19.48 (2.92)	20.27 (2.44)	19.54 (3.61)	0.14	0.65	-0.61	0.89	0.12	0.69	-0.6	0.84	-0.02		0.93	-0.69	0.64	
IPQ [FU6]	18.14 (3.06)	17.48 (3.39)	16.3 (4.5)	-0.94	0.14	-2.48	0.59	-1.59	**0.01	-3.07	-0.11	-0.62		0.28	-1.98	0.75	
GSS [FU6]	27.49 (6.08)	27.2 (6.47)	26.12 (7.86)	-0.99	0.38	-3.7	1.72	-1.35	0.22	-3.97	1.27	-0.42		0.68	-2.88	2.05	
RTW-SE [FU6]	26.6 (7.89)	25.23 (8.57)	26.55 (9.07)	1.19	0.39	-2.11	4.49	-0.15	0.91	-3.4	3.1	-1.3		0.3	-4.29	1.69	
QoLs [FU6]	71.51(13.99)	70.28(15.51)	70.25 (15.6)	0.35	0.88	-5.31	6.01	-0.47	0.83	-5.77	4.84	-0.93		0.66	-6.08	4.21	
EQ5 [FU6]	0.8 (0.15)	0.78 (0.17)	0.78 (0.16)	0	0.93	-0.06	0.07	-0.02	0.48	-0.08	0.04	-0.02		0.4	-0.08	0.04	
IS [FU6]	26.94 (4.51)	26.16 (4.86)	19.35 (6.54)	-5.38	**0	-7.98	-2.79	-6.1	**0	-8.58	-3.62	-0.71		0.41	-2.79	1.36	
BAI [FU12]	11.26 (7.77)	13.91 (9.32)	13.33 (9.98)	0.15	0.93	-3.79	4.08	2.25	0.14	-1.46	5.96	2.15		0.13	-1.29	5.6	
BDI [FU12]	8.04 (8.21)	11.68 (9.08)	10.5 (10.5)	-0.86	0.61	-4.88	3.16	2.16	0.18	-1.69	6.01	3.03	*	0.04	37-0.57	6.62	
PSS [FU12]	13.9 (7.38)	16.29 (6.87)	15.88 (7.55)	-0.1	0.93	-3.13	2.93	1.83	0.14	-1.14	4.79	1.92		0.09	-0.82	4.67	
KES [FU12]	53.53(18.56)	60.49(17.53)	57.04(18.32)	-1.93	0.5	-8.83	4.97	4.04	0.16	-2.82	10.89	6.03	*	0.02	51-0.42	12.48	
DSQ-som. [FU12]	8.78 (6.2)	9.48 (6.14)	10.09 (6.46)	0.83	0.45	-1.84	3.5	1.31	0.23	-1.33	3.95	0.57		0.59	-1.95	3.08	
DSQ-distr. [FU12]	10.37 (7.39)	12.73 (6.97)	11.73 (8.13)	-0.69	0.58	-3.72	2.33	1.18	0.35	-1.85	4.22	1.94		0.1	-0.9	4.79	
DSQ-anx. [FU12]	3.33 (3.55)	5.55 (5.5)	3.67 (4.28)	-1.32	0.15	-3.49	0.86	0.4	0.63	-1.6	2.39	1.77	*	0.03	89-0.28	3.82	
DSQ-depr. [FU12]	1.1 (2.4)	1.45 (2.4)	1.54 (2.56)	0	0.99	-1.11	1.1	0.25	0.58	-0.86	1.37	0.28		0.52	-0.76	1.32	
WSAS [FU12]	8.85 (7.94)	13.73(10.95)	9.73 (9.15)	-3.13	0.06	-7.18	0.92	1.09	0.48	-2.65	4.84	4.19	**	0.00	69	0.48	7.89
SPS [FU12]	18.58 (3.49)	19.76 (3.53)	18.91 (3.72)	0.02	0.96	-0.92	0.96	-0.37	0.32	-1.26	0.52	-0.37		0.29	-1.22	0.47	
IPQ [FU12]	18.28 (3.78)	17.75 (4.11)	17.17 (3.59)	-0.64	0.36	-2.32	1.04	-1.09	0.09	-2.65	0.46	-0.44		0.49	-1.96	1.08	
GSS [FU12]	29.31 (7.01)	26.82 (7.36)	27.57 (7.46)	0.36	0.77	-2.56	3.29	-1.79	0.13	-4.62	1.04	-2.21		0.05	-4.92	0.5	
RTW-SE [FU12]	30.12 (7.86)	26.26(10.19)	29.52 (7.59)	2.92	0.06	-0.74	6.58	-0.74	0.6	-4.14	2.66	-3.65	**	0.00	87-6.97	-0.32	
QoLs [FU12]	76.32(14.38)	71.33(17.37)	72.43(15.09)	1.36	0.59	-4.67	7.4	-2.76	0.24	-8.38	2.86	-4.25		0.07	-9.95	1.45	
EQ5 [FU12]	0.84 (0.13)	0.78 (0.16)	0.8 (0.13)	0.02	0.55	-0.05	0.08	-0.03	0.25	-0.09	0.03	-0.05		0.07	-0.11	0.01	

Analyses regarding: >interaction<

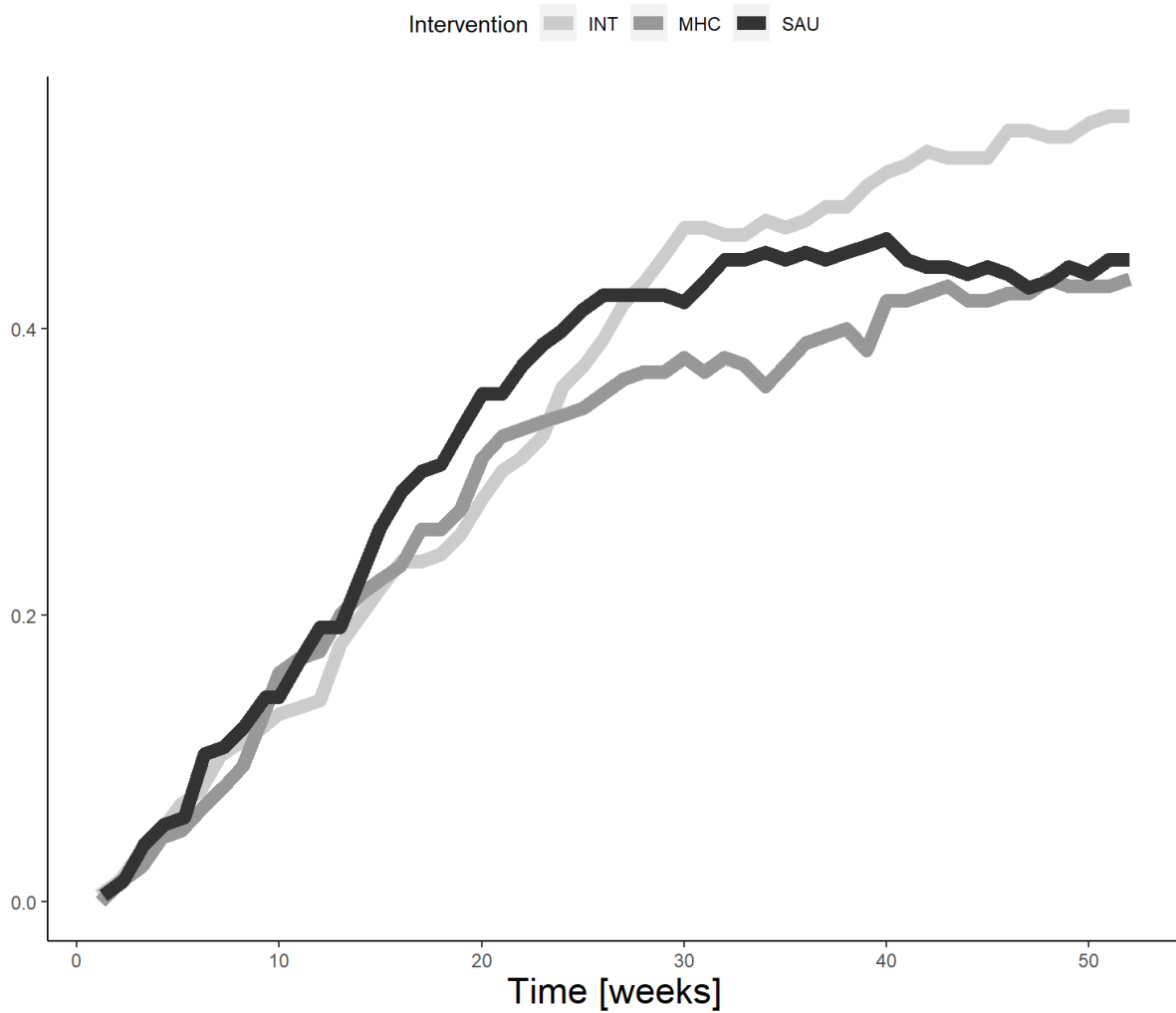
Kaplan Meier-curve at 12-month follow-up regarding: interaction

Time to stable return-to-work



Proportion over time-curve at 12-month follow-up regarding: interaction<

Proportion in stable work, per week



Vocational outcomes at 12-month follow-up from subgroup >interaction< in RCT1

	Group values			SAU-MHC				SAU-INT				MHC-INT						
	INT	MHC	SAU	Est.	p	low CI	high CI	Est.	p	low CI	high CI	Est.	p	low CI	high CI			
RTW, FU12 [weeks, HR]	30.0	37.0	31.0	1.69	**	0.0153	1.00	2.83	1.10	0.62	0.69	1.76	0.64	*	0.0324	0.38	1.06	
RTW, FU12 [weeks, HR]:stratdiagdepr				0.53	*	0.0209			0.78	0.34			1.50		0.13			
RTW, FU6 [HR]				1.89	**	0.0087	1.05	3.38	1.61	*	0.0389	0.93	2.78	0.85		0.53	0.46	1.57
RTW, FU6 [HR]:stratdiagdepr				0.53	*	0.0405			0.62	0.11			1.17		0.63			
PROP, FU12 [% , OR]	56.2	43.7	45.0	1.60			0.17	0.70	3.65	0.77	0.44	0.33	1.77	0.48	*	0.0338	0.21	1.10
PROP, FU12 [% , OR]:stratdiagdepr				-0.62			0.15			-0.29	0.5			0.33		0.45		
WEEKS, FU12 [weeks, RR]	18.3	15.8	17.6	1.42	*	0.0296	0.96	2.08	1.04	0.8	0.75	1.43	0.73		0.05	0.50	1.08	
WEEKS, FU12 [weeks, RR]:stratdiagdepr				-0.40			0.05			-0.11	0.55			0.29		0.15		

Self-reported outcomes at 6- and 12-month follow-up regarding: interaction

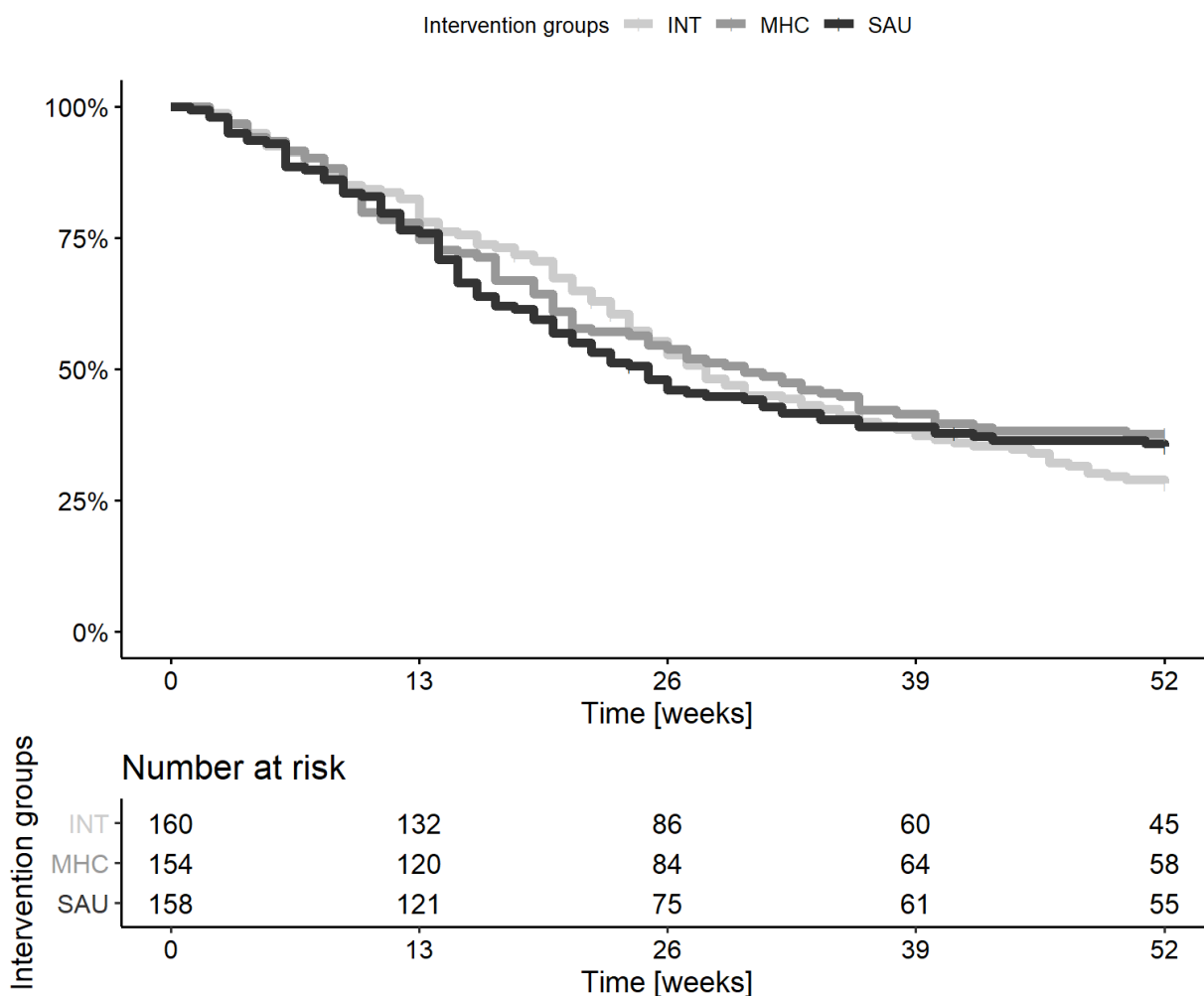
	Group values			SAU-MHC				SAU-INT				MHC-INT						
	INT (SD)	MHC (SD)	SAU (SD)	Est.	p	low CI	high CI	Est.	p	low CI	high CI	Est.	p	low CI	high CI			
BAI [FU6]	12.57 (8.56)	12.89 (9.06)	14.17 (9.41)	0.24				0.87	-3.27	3.76	1.94	0.16	-1.38	5.27	1.72	0.2	-1.5	4.94

	Group values			SAU-MHC			SAU-INT			MHC-INT					
	INT (SD)	MHC (SD)	SAU (SD)	Est.	p	low CI	high CI	Est.	p	low CI	high CI	Est.	p	low CI	high CI
BDI [FU6]	12.5 (9.03)	12.83 (9.8)	14.39(11.09)	1.36	0.35	-2.11	4.84	0.99	0.48	-2.36	4.34	-0.42	0.76	-3.66	2.82
PSS [FU6]	16.51 (7.38)	16.33 (7.03)	18.33 (7.33)	1.88*	0.0487	-0.41	4.17	1.56	0.1	-0.73	3.86	-0.32	0.73	-2.51	1.88
KES [FU6]	65.82(17.82)	67.4(17.87)	69.92(18.81)	2.03	0.38	-3.49	7.56	3.94	0.09	-1.58	9.46	1.92	0.39	-3.42	7.26
DSQ-som. [FU6]	9.22 (6.25)	9.4 (6.5)	10.12 (6.72)	0.81	0.44	-1.72	3.34	0.7	0.48	-1.7	3.09	-0.07	0.94	-2.47	2.33
DSQ-distr. [FU6]	13.04 (7.87)	13.75 (7.74)	14.18 (8.59)	0.22	0.83	-2.33	2.77	0.37	0.73	-2.17	2.91	0.15	0.88	-2.29	2.59
DSQ-anx. [FU6]	3.9 (4.62)	4.3 (4.99)	4.49 (5.29)	-0.47	0.59	-2.53	1.59	0.46	0.58	-1.53	2.45	0.93	0.25	-1.01	2.86
DSQ-depr. [FU6]	1.72 (2.62)	1.83 (2.63)	2.64 (3.37)	0.73	0.11	-0.37	1.84	0.38	0.4	-0.71	1.48	-0.35	0.43	-1.42	0.71
WSAS [FU6]	13.44 (9.96)	14.96(10.61)	15.05(10.71)	-0.49	0.72	-3.77	2.79	0.78	0.55	-2.37	3.93	1.21	0.34	-1.85	4.27
SPS [FU6]	19.58 (2.93)	19.82 (2.68)	19.58 (3.77)	0.93	0.42	-1.85	3.71	0.41	0.68	-2.01	2.83	-0.42	0.65	-2.66	1.81
IPQ [FU6]	17.34 (3.29)	16.88 (3.7)	15.85 (4.08)	-1.04	0.07	-2.4	0.32	-1.63**	0.0025	-2.91	-0.34	-0.57	0.28	-1.84	0.69
GSS [FU6]	26.74 (6.72)	26.29 (6.74)	25.6 (7.12)	-1.2	0.24	-3.62	1.23	-1.77	0.08	-4.19	0.65	-0.59	0.55	-2.92	1.75
RTW-SE [FU6]	25.7 (9.06)	23.97 (9.14)	24.04 (9.79)	0.88	0.45	-1.92	3.69	-0.43	0.72	-3.27	2.42	-1.3	0.24	-3.97	1.36
QoLs [FU6]	69.89(14.75)	69.6(15.03)	68.14(16.02)	-0.29	0.89	-5.44	4.86	-0.9	0.67	-5.9	4.1	-0.58	0.78	-5.52	4.36
EQ5 [FU6]	0.79 (0.15)	0.78 (0.16)	0.77 (0.16)	0	0.84	-0.06	0.05	-0.03	0.21	-0.08	0.03	-0.02	0.31	-0.08	0.03
IS [FU6]	26.83 (4.48)	25.36 (5.09)	20.03 (6.1)	-5.36	**0	-7.86	-2.85	-6.03	**0	-8.41	-3.66	-0.71	0.42	-2.82	1.4
BAI [FU12]	12.05 (9.03)	11.96 (8.92)	12.34 (9.22)		0.8				0.7				0.45		
BDI [FU12]	11.14(10.58)	12.05 (9.92)	12.54(11.56)		0.83				0.29				0.4		
PSS [FU12]	15.52 (7.82)	16.01 (7.22)	15.93 (7.64)		0.67				0.28				0.47		
KES [FU12]	57.73(19.05)	59.64(18.98)	60.62(19.97)	-0.12	0.96	-6.03	5.78	2.86	0.24	-2.99	8.7	3	0.21	-2.72	8.72
DSQ-som. [FU12]	9.85 (6.99)	9.41 (6.38)	9.6 (6.61)	0.58	0.57	-1.88	3.03	0.49	0.62	-1.9	2.88	-0.04	0.96	-2.41	2.32
DSQ-distr. [FU12]	12.35 (8.1)	13.07 (7.62)	12.93 (8.69)	-0.49	0.65	-3.08	2.1	0.25	0.82	-2.36	2.86	0.75	0.47	-1.76	3.25
DSQ-anx. [FU12]	3.39 (4.15)	3.98 (4.97)	3.58 (4.72)	-1.06	0.19	-3	0.89	0.19	0.81	-1.66	2.04	1.25	0.1	-0.59	3.09
DSQ-depr. [FU12]	1.59 (2.64)	1.78 (2.4)	2.12 (3.25)	0.25	0.57	-0.81	1.32	0.11	0.81	-0.96	1.18	-0.14	0.73	-1.14	0.85
WSAS [FU12]	11.85 (9.81)	12.8(10.61)	12.22(10.55)		0.25				0.83				0.15		
SPS [FU12]	19.53 (3.35)	19.88 (3.25)	19.35 (3.7)	0.28	0.84	-3.04	3.59	-0.53	0.66	-3.45	2.39	-0.73	0.51	-3.34	1.89
IPQ [FU12]	17.21 (4.19)	17.04 (4.09)	16.38 (4.02)	-0.76	0.2	-2.19	0.66	-1.09	*0.0482	-2.41	0.23	-0.32	0.57	-1.65	1.01
GSS [FU12]	28.22 (6.93)	27.46 (7.19)	27.21 (7.86)	-0.44	0.67	-2.91	2.04	-1.72	0.09	-4.18	0.74	-1.31	0.18	-3.68	1.06
RTW-SE [FU12]	28.1 (9.24)	26.26 (9.7)	27.43 (9.25)	2	0.11	-1.01	5.01	-0.08	0.95	-3.05	2.89	-2.1	0.08	-4.93	0.74
QoLs [FU12]	73.19(15.68)	71.84(15.98)	71.21(16.67)	0.5	0.82	-4.77	5.76	-1.73	0.42	-6.88	3.43	-2.21	0.3	-7.32	2.9
EQ5 [FU12]	0.8 (0.16)	0.78 (0.16)	0.79 (0.16)	0.01	0.59	-0.04	0.07	-0.02	0.35	-0.08	0.03	-0.03	0.13	-0.09	0.02

Analyses regarding: >emp<

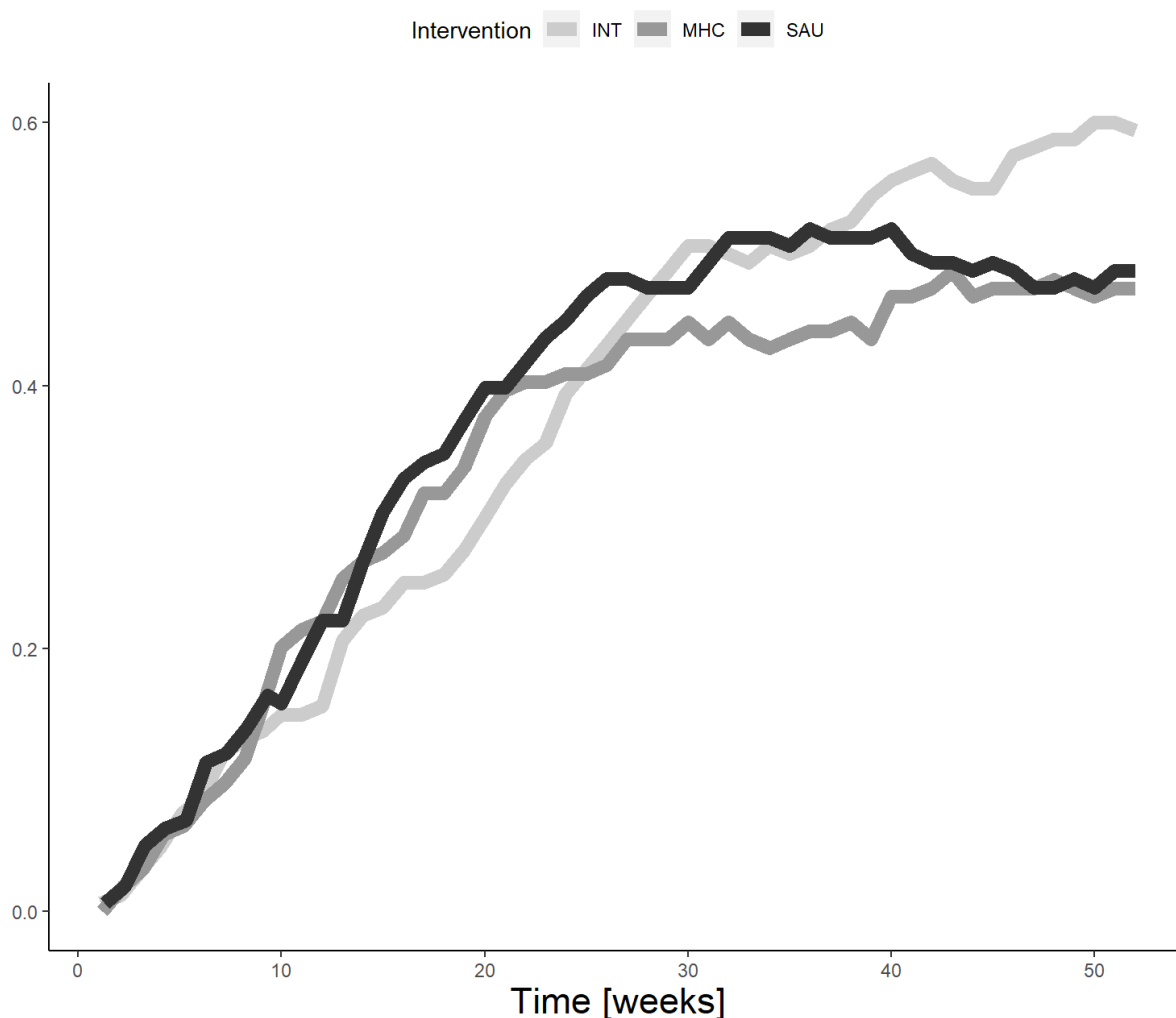
Kaplan Meier-curve at 12-month follow-up regarding: emp

Time to stable return-to-work



Proportion over time-curve at 12-month follow-up regarding: emp<

Proportion in stable work, per week



Vocational outcomes at 12-month follow-up from subgroup >emp< in RCT1

	Group values			SAU-MHC				SAU-INT				MHC-INT			
	INT	MHC	SAU	Est.	p	low CI	high CI	Est.	p	low CI	high CI	Est.	p	low CI	high CI
RTW, FU12 [weeks, HR]	28.0	30.0	25.0	1.11	0.48	0.79	1.56	0.99	0.96	0.71	1.38	0.88	0.38	0.63	1.24
RTW, FU6 [HR]				1.24	0.19	0.84	1.82	1.27	0.14	0.86	1.85	1.02	0.89	0.69	1.52
PROP, FU12 [% , OR]	60.9	47.4	49.0	1.10	0.69	0.63	1.93	0.62	*0.041	0.35	1.09	0.56	**0.0148	0.32	0.99
WEEKS, FU12 [weeks, RR]	19.8	18.4	19.8	1.09	0.42	0.85	1.40	1.01	0.94	0.80	1.27	0.93	0.46	0.73	1.18

Self-reported outcomes at 6- and 12-month follow-up regarding: emp

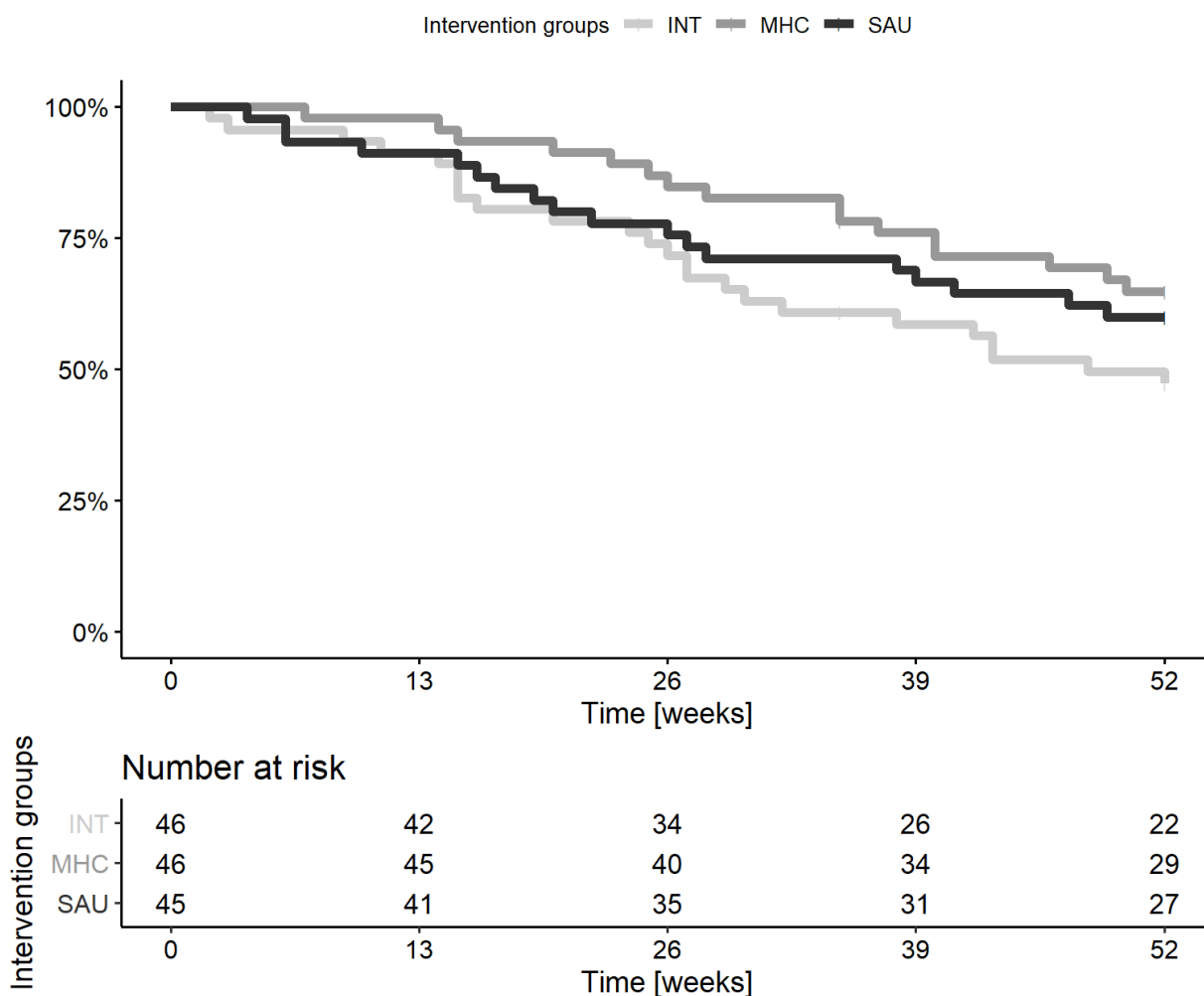
	Group values			SAU-MHC				SAU-INT				MHC-INT			
	INT (SD)	MHC (SD)	SAU (SD)	Est.	p	low CI	high CI	Est.	p	low CI	high CI	Est.	p	low CI	high CI
BAI [FU6]	12.76 (8.61)	12.67 (8.77)	13.83 (9.14)	0.94		0.39	-1.67 3.55	0.63		0.55	-1.91 3.17	-0.26		0.8	-2.75 2.22
BDI [FU6]	12.49 (9.09)	12.39 (9.69)	14.13(10.96)	1.39		0.22	-1.36 4.15	1.18		0.29	-1.52 3.89	-0.21		0.84	-2.8 2.37
PSS [FU6]	16.17 (7.35)	16.27 (6.84)	18.22 (7.23)	1.6	*0.0344	-0.21	3.41	1.64	*0.0345	-0.22	3.49	0.05		0.95	-1.73 1.82
KES [FU6]	65.33(18.13)	66.72(16.98)	69.03(18.16)	1.93		0.27	-2.28 6.14	3.28		0.07	-1.01 7.57	1.38		0.44	-2.88 5.64
DSQ-som. [FU6]	9.38 (6.34)	9.19 (6.37)	10.13 (6.63)	0.82		0.29	-1.06 2.71	0.57		0.44	-1.21 2.35	-0.23		0.76	-2.08 1.61

	Group values			SAU-MHC				SAU-INT				MHC-INT			
	INT (SD)	MHC (SD)	SAU (SD)	Est.	p	low CI	high CI	Est.	p	low CI	high CI	Est.	p	low CI	high CI
DSQ-distr. [FU6]	12.61 (7.75)	13.57 (7.46)	14 (8.49)	0.23		0.78-1.77	2.24	1.06		0.21-0.97	3.09	0.82		0.31-1.11	2.75
DSQ-anx. [FU6]	3.73 (4.46)	4.27 (4.9)	4.07 (5.02)	-0.02		0.97-1.51	1.47	0.34		0.57 -1.1	1.79	0.39		0.52-1.06	1.84
DSQ-depr. [FU6]	1.59 (2.4)	1.7 (2.5)	2.37 (3.13)	0.48		0.17-0.36	1.31	0.58		0.1-0.26	1.41	0.09		0.78-0.71	0.9
WSAS [FU6]	13.1 (9.73)	14.8 (10.7)	14.32 (9.96)	-0.37		0.73-2.94	2.2	1.1		0.29-1.43	3.64	1.46		0.16-1.01	3.93
SPS [FU6]	19.51 (2.82)	19.85 (2.78)	19.82 (3.45)	0.11		0.72-0.64	0.87	0.12		0.68 -0.6	0.85	0		1-0.67	0.67
IPQ [FU6]	17.5 (3.21)	16.91 (3.77)	16.06 (4.01)	-0.7		0.11-1.75	0.35	-1.25**	0.0027	-2.24-0.25		-0.55		0.18-1.52	0.42
GSS [FU6]	26.76 (6.8)	26.5 (6.7)	26.03 (7.07)	-0.57		0.47-2.46	1.32	-0.77		0.33-2.66	1.11	-0.21		0.79-2.05	1.63
RTW-SE [FU6]	25.76 (9.12)	24.54 (8.94)	24.28 (9.39)	-0.08		0.93-2.34	2.19	-1.3		0.17-3.58	0.99	-1.22		0.18-3.42	0.98
QoLs [FU6]	70.03(14.66)	69.78(15.18)	68.67(15.61)	-0.8		0.62-4.73	3.12	-0.9		0.57 -4.7	2.89	-0.12		0.94-4.01	3.76
EQ5 [FU6]	0.79 (0.15)	0.78 (0.17)	0.78 (0.15)	-0.01		0.75-0.05	0.04	-0.01		0.51-0.05	0.03	-0.01		0.73-0.05	0.04
IS [FU6]	26.87 (4.33)	25.57 (5.19)	20.53 (5.89)	-3.8		**0-5.54	-2.06	-5		**0-6.63	-3.37	-1.2*	0.0485	-2.67	0.26
BAI [FU12]	12.48 (9.26)	12.35 (9.16)	12.43 (8.76)	0.91		0.17 -0.7	2.52	0.74		0.26-0.84	2.33	-0.13		0.84-1.69	1.42
BDI [FU12]	11.15(10.79)	12.78(10.36)	12.56(10.79)	0.04		0.96-1.74	1.82	0.54		0.46 -1.2	2.28	0.49		0.49-1.21	2.2
PSS [FU12]	15.31 (7.95)	16.52 (7.12)	16.09 (7.77)	0.25		0.65-1.06	1.55	0.68		0.21-0.62	1.98	0.44		0.42-0.86	1.73
KES [FU12]	56.91(19.41)	60.69(19.05)	60.74(19.49)	0.14		0.94-4.59	4.87	2.65		0.17-2.03	7.33	2.55		0.19-2.13	7.23
DSQ-som. [FU12]	10.03 (7.15)	9.88 (6.5)	9.94 (6.38)	0.19		0.81-1.72	2.1	0.04		0.96-1.79	1.87	-0.13		0.87-1.97	1.71
DSQ-distr. [FU12]	11.95 (8.19)	13.57 (7.72)	13.27 (8.6)	-0.44		0.62-2.56	1.69	0.88		0.32-1.24	3	1.33		0.12-0.72	3.37
DSQ-anx. [FU12]	3.37 (4.14)	4.19 (5.21)	3.5 (4.51)	-0.41		0.5-1.85	1.04	0.12		0.84-1.26	1.5	0.55		0.35-0.86	1.96
DSQ-depr. [FU12]	1.44 (2.49)	1.91 (2.41)	2.12 (3.16)	0.12		0.73-0.71	0.94	0.4		0.25-0.43	1.22	0.27		0.4 -0.5	1.05
WSAS [FU12]	11.29 (9.45)	13.38(10.76)	11.89(10.02)	-0.1		0.89-1.93	1.72	0.51		0.49-1.26	2.27	0.61		0.4-1.14	2.37
SPS [FU12]	19.68 (3.4)	19.96 (3.09)	19.56 (4.01)	0.01		0.98-0.92	0.95	-0.31		0.4-1.21	0.58	-0.31		0.38-1.15	0.53
IPQ [FU12]	17.13 (4.31)	17.09 (3.97)	16.42 (3.99)	-0.55		0.25-1.69	0.59	-0.6		0.19-1.68	0.48	-0.05		0.91-1.11	1
GSS [FU12]	28.52 (7.05)	27.23 (7.17)	27.07 (7.82)	-0.2		0.82-2.24	1.84	-1.21		0.16-3.25	0.83	-1.02		0.21-2.96	0.92
RTW-SE [FU12]	28.49 (9.27)	26.3 (9.9)	28.07 (8.75)	1.07		0.3-1.39	3.53	-0.7		0.49-3.16	1.75	-1.8		0.07-4.17	0.58
QoLs [FU12]	74.13(15.82)	71.16 (16.3)	70.65(16.39)	-0.37		0.83-4.55	3.81	-2.04		0.24-6.19	2.11	-1.69		0.33-5.89	2.5
EQ5 [FU12]	0.8 (0.17)	0.77 (0.17)	0.78 (0.17)	0.01		0.57-0.03	0.05	-0.01		0.59-0.05	0.03	-0.02		0.27-0.06	0.02

Analyses regarding: >vac<

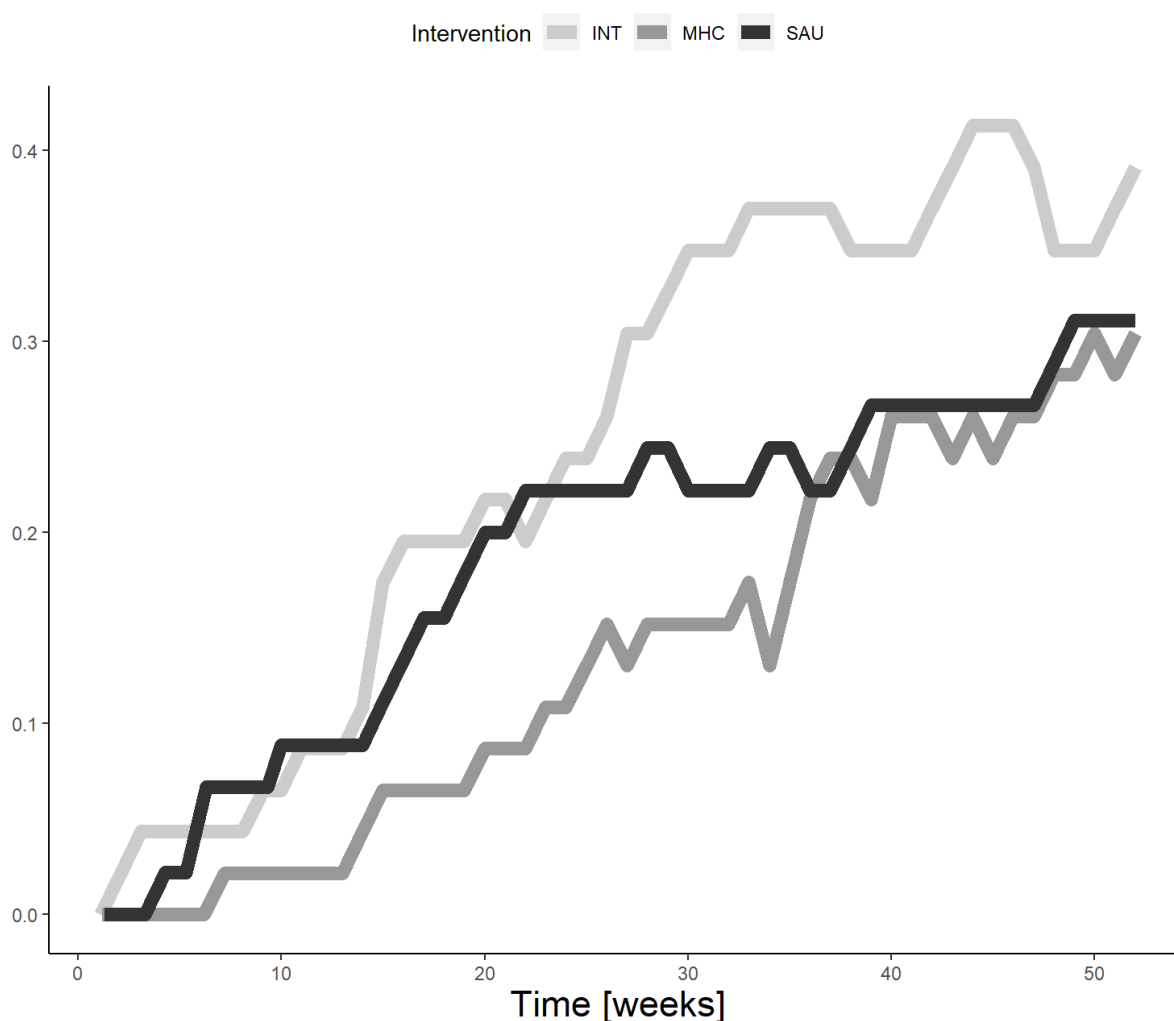
Kaplan Meier-curve at 12-month follow-up regarding: vac

Time to stable return-to-work



Proportion over time-curve at 12-month follow-up regarding: vac<

Proportion in stable work, per week



Vocational outcomes at 12-month follow-up from subgroup >vac< in RCT1

	Group values			SAU-MHC			SAU-INT			MHC-INT		
	INT	MHC	SAU	Est.	p	low CI:high CI	Est.	p	low CI:high CI	Est.	p	low CI:high CI
RTW, FU12 [weeks, HR]	48			1.36	0.38	0.57 3.24	0.79	0.45	0.36 1.7	0.57	0.08	0.26 1.25
RTW, FU6 [HR]				2.18	0.12	0.65 7.35	0.97	0.95	0.35 2.68	0.49	0.13	0.16 1.54
PROP, FU12 [% ,OR]	40	31.1	31.1	1	1	0.32 3.08	0.66	0.36	0.21 2.03	0.67	0.38	0.22 2.02
WEEKS, FU12 [weeks, RR]	13	7.4	10	1.34	0.37	0.6 2.99	0.79	0.38	0.4 1.53	0.57	0.06	0.28 1.19

Self-reported outcomes at 6- and 12-month follow-up regarding: vac

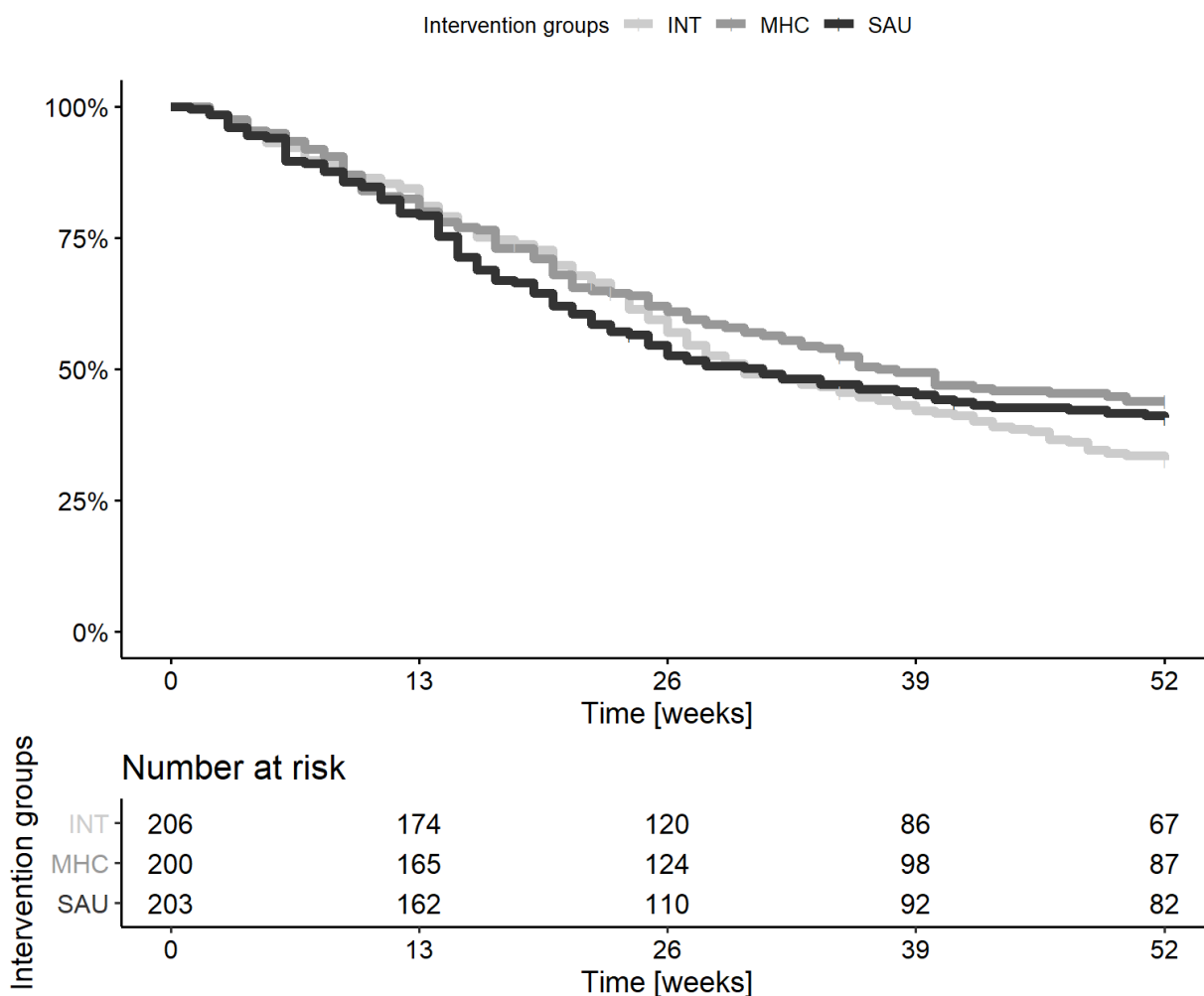
	Group values			SAU-MHC				SAU-INT				MHC-INT			
	INT (SD)	MHC (SD)	SAU (SD)	Est.	p	low CI	high CI	Est.	p	low CI	high CI	Est.	p	low CI	high CI
BAI [FU6]	11.8 (8.42)	13.72(10.12)	15.22(10.23)	1.91	0.39	-3.48	7.29	3.62	0.09	-1.44	8.68	1.72	0.39	-3.15	6.58
BDI [FU6]	12.58 (8.9)	14.43 (10.2)	15.22 (11.6)	1.05	0.62	-4.11	6.22	2.14	0.28	-2.59	6.87	1.12	0.57	-3.68	5.92
PSS [FU6]	17.91 (7.47)	16.56 (7.76)	18.68 (7.72)	1.95	0.2	-1.73	5.63	0.92	0.52	-2.57	4.4	-1.02	0.48	-4.54	2.5
KES [FU6]	67.85(16.56)	69.89(20.87)	72.78 (20.8)	2.52	0.48	-6	11.04	4.57	0.17	-3.49	12.64	2.18	0.5	-5.66	10.02
DSQ-som. [FU6]	8.56 (5.9)	10.14 (7)	10.08 (7.1)	0.32	0.84	-3.38	4.02	0.99	0.51	-2.69	4.68	0.73	0.61	-2.76	4.22
DSQ-distr. [FU6]	14.71 (8.2)	14.37 (8.76)	14.79 (9.01)	0.58	0.72	-3.3	4.47	0.4	0.8	-3.36	4.15	-0.13	0.93	-3.9	3.65

	Group values			SAU-MHC				SAU-INT				MHC-INT			
	INT (SD)	MHC (SD)	SAU (SD)	Est.	p	low CI	high CI	Est.	p	low CI	high CI	Est.	p	low CI	high CI
DSQ-anx. [FU6]	4.54 (5.22)	4.4 (5.38)	5.86 (5.95)	1.54	0.24	-1.61	4.68	1.48	0.25	-1.6	4.56	-0.07	0.95	-2.93	2.78
DSQ-depr. [FU6]	2.26 (3.35)	2.31 (3.06)	3.5 (3.98)	0.89	0.21	-0.83	2.61	0.96	0.18	-0.77	2.68	0.08	0.91	-1.63	1.79
WSAS [FU6]	14.86(10.89)	15.56(10.39)	17.33(12.66)	1.17	0.58	-3.92	6.25	1.72	0.41	-3.3	6.73	0.63	0.76	-4.24	5.49
SPS [FU6]	19.89 (3.46)	19.69 (2.14)	18.46 (4.99)	0.11	0.72	-0.64	0.87	0.12	0.68	-0.6	0.85	0	1	-0.67	0.67
IPQ [FU6]	16.71 (3.6)	16.77 (3.44)	15.15 (4.29)	-1.06	0.2	-3.06	0.93	-1.34	0.11	-3.39	0.71	-0.21	0.8	-2.25	1.82
GSS [FU6]	26.64 (6.44)	25.5 (6.9)	24.14 (7.21)	-0.58	0.69	-4.06	2.91	-2.36	0.1	-5.78	1.06	-1.69	0.24	-5.15	1.78
RTW-SE [FU6]	25.49 (8.95)	21.8 (9.66)	23.32(11.04)	1.26	0.5	-3.22	5.74	-1.8	0.33	-6.25	2.66	-3.04	0.09	-7.35	1.27
QoLs [FU6]	69.3(15.35)	68.94(14.66)	66.46 (17.4)	-1.52	0.62	-8.85	5.82	-1.65	0.58	-8.9	5.6	-0.24	0.93	-7.18	6.7
EQ5 [FU6]	0.78 (0.15)	0.77 (0.11)	0.74 (0.17)	-0.03	0.42	-0.11	0.06	-0.03	0.32	-0.12	0.05	-0.01	0.86	-0.09	0.07
IS [FU6]	26.69 (5.12)	24.6 (4.66)	18.35 (6.55)	-4.73	**9e-04	-8.08	-1.38	-6.32	**0	-9.77	-2.86	-1.62	0.2	-4.68	1.43
BAI [FU12]	10.27 (7.9)	10.26 (7.75)	12(10.94)	1.62	0.31	-2.19	5.44	1.57	0.3	-2.05	5.19	-0.11	0.94	-3.64	3.42
BDI [FU12]	11.07 (9.83)	8.98 (7.19)	12.43(14.29)	0.26	0.88	-3.85	4.38	-0.06	0.97	-4.02	3.91	-0.28	0.86	-4.2	3.63
PSS [FU12]	16.4 (7.35)	13.81 (7.36)	15.32 (7.22)	0.55	0.66	-2.49	3.58	0.19	0.87	-2.66	3.05	-0.38	0.76	-3.44	2.67
KES [FU12]	61.14(17.41)	55.15(18.35)	60.19(22.09)	3.6	0.36	-5.86	13.07	0.15	0.97	-8.68	8.99	-3.34	0.34	-11.73	5.05
DSQ-som. [FU12]	9.07 (6.31)	7.41 (5.51)	8.33 (7.42)	1.15	0.45	-2.54	4.83	0.33	0.83	-3.26	3.91	-0.78	0.58	-4.23	2.67
DSQ-distr. [FU12]	14.03 (7.62)	11 (6.95)	11.61 (9.03)	0.57	0.73	-3.48	4.62	-1.16	0.48	-5.07	2.75	-1.69	0.28	-5.48	2.1
DSQ-anx. [FU12]	3.48 (4.25)	3.04 (3.66)	3.89 (5.51)	1.01	0.41	-1.97	3.99	0.92	0.45	-2.02	3.86	-0.11	0.92	-2.79	2.57
DSQ-depr. [FU12]	2.21 (3.17)	1.22 (2.29)	2.11 (3.65)	0.67	0.35	-1.05	2.38	0.11	0.88	-1.63	1.84	-0.53	0.42	-2.13	1.07
WSAS [FU12]	14.21(11.07)	10.3 (9.68)	13.5(12.52)	-0.5	0.77	-4.72	3.71	-1.11	0.51	-5.22	2.99	-0.59	0.73	-4.65	3.47
SPS [FU12]	18.85 (3.08)	19.43 (4.13)	18.44 (1.55)	0.01	0.98	-0.92	0.95	-0.31	0.4	-1.21	0.58	-0.31	0.38	-1.15	0.53
IPQ [FU12]	17.54 (3.68)	16.8 (4.63)	16.21 (4.22)	-0.4	0.65	-2.54	1.74	-1.2	0.19	-3.4	1	-0.74	0.41	-2.9	1.41
GSS [FU12]	26.93 (6.37)	28.44 (7.34)	27.71 (8.16)	-0.61	0.7	-4.42	3.2	-0.67	0.65	-4.27	2.93	0.01	0.99	-3.68	3.7
RTW-SE [FU12]	26.46 (9.06)	26.12 (8.98)	25.11 (10.7)	0.11	0.96	-4.78	5	-0.83	0.67	-5.6	3.94	-0.97	0.61	-5.58	3.65
QoLs [FU12]	69.29(14.69)	74.59(14.58)	73.21 (17.8)	-0.77	0.82	-8.8	7.25	1.57	0.64	-6.55	9.68	2.29	0.45	-5.05	9.63
EQ5 [FU12]	0.79 (0.14)	0.83 (0.1)	0.82 (0.13)	-0.02	0.58	-0.1	0.07	0	0.91	-0.08	0.09	0.02	0.48	-0.06	0.1

Analyses regarding: >intempl<

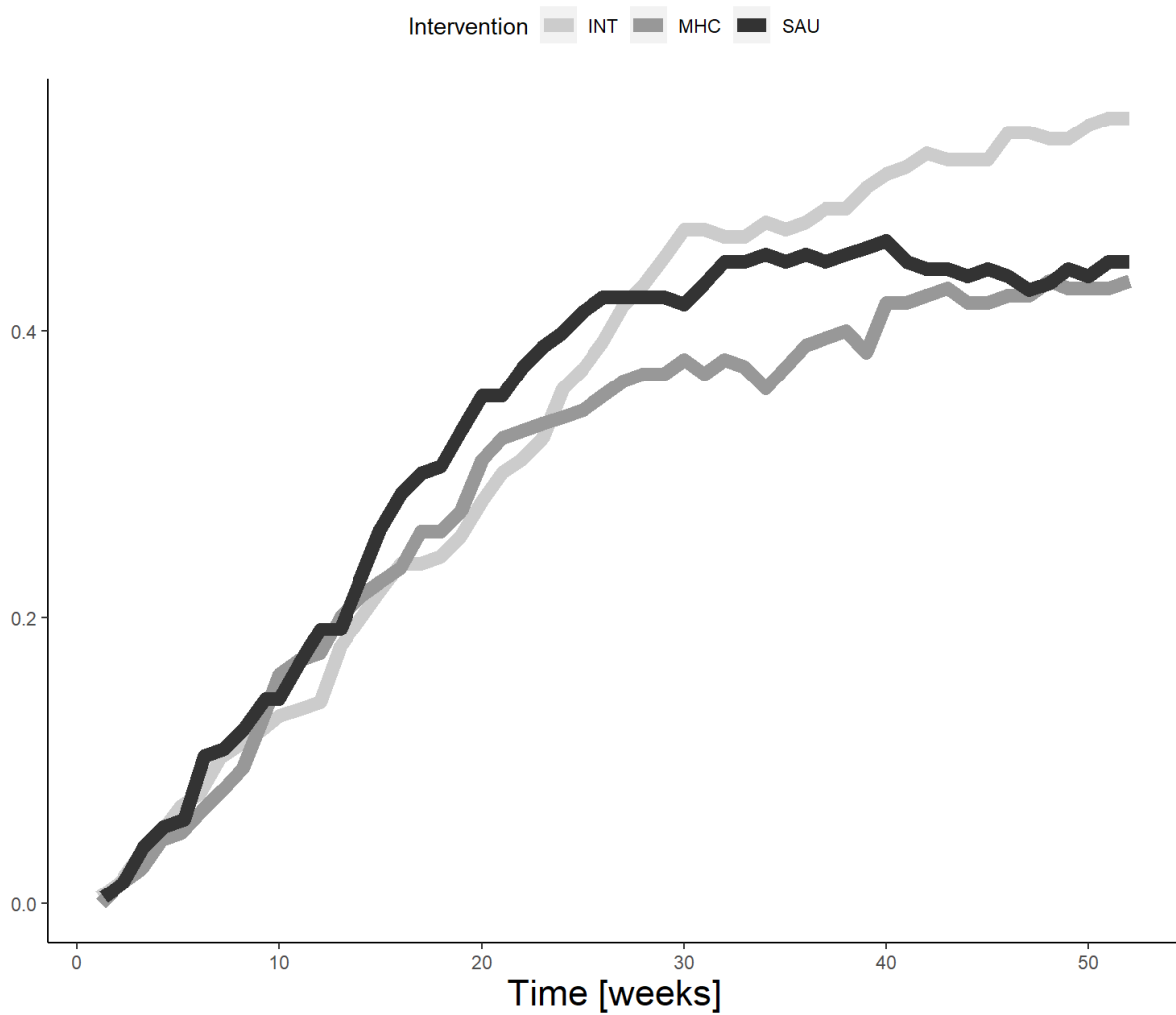
Kaplan Meier-curve at 12-month follow-up regarding: intempl

Time to stable return-to-work



Proportion over time-curve at 12-month follow-up regarding: intempl<

Proportion in stable work, per week



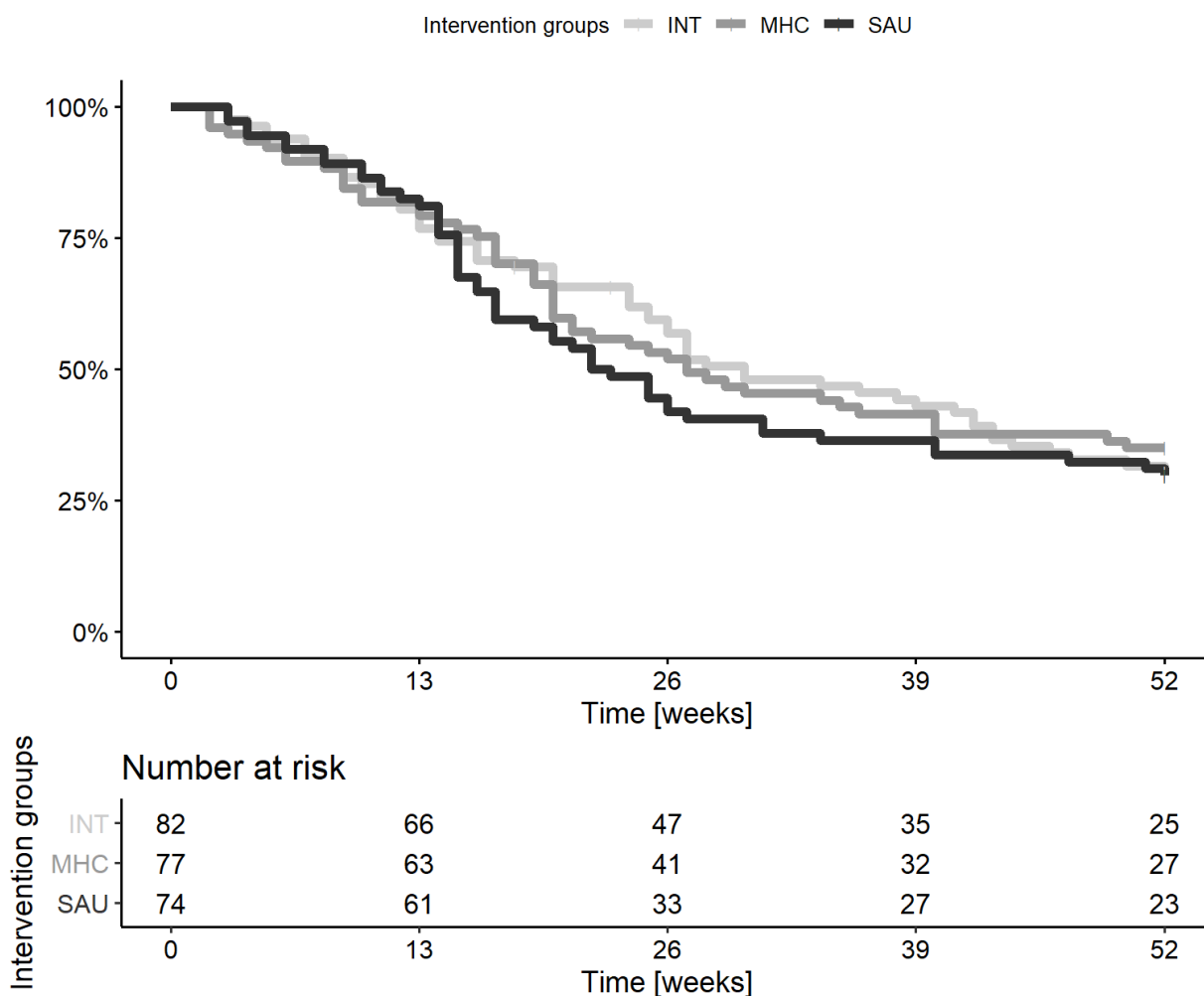
Vocational outcomes at 12-month follow-up from subgroup >intempl< in RCT1

	Group values			SAU-MHC			SAU-INT			MHC-INT		
	INT	MHC	SAU	Est.	p	low CI : high CI	Est.	p	low CI : high CI	Est.	p	low CI : high CI
RTW, FU12 [weeks, HR]	30.0	37.0	31.0	1.11	0.46	0.79 1.57	1.00	1	0.72 1.39	0.88	0.35	0.63 1.23
RTW, FU12 [weeks, HR]:stratlabormarketvac				1.19	0.63		0.75	0.41		0.65	0.23	
RTW, FU6 [HR]				1.24	0.18	0.84 1.83	1.28	0.13	0.87 1.87	1.02	0.90	0.69 1.52
RTW, FU6 [HR]:stratlabormarketvac				1.49	0.43		0.69	0.4		0.48	0.14	
PROP, FU12 [% , OR]	56.2	43.7	45.0	1.09	0.70	0.63 1.91	0.62*	0.04	0.35 1.09	0.57**	0.01	0.32 1.00
PROP, FU12 [% , OR]:stratlabormarketvac				-0.08	0.88		0.12	0.81		0.19	0.71	
WEEKS, FU12 [weeks, RR]	18.3	15.8	17.6	1.09	0.42	0.85 1.40	1.01	0.93	0.80 1.27	0.93	0.45	0.73 1.18
WEEKS, FU12 [weeks, RR]:stratlabormarketvac				0.22	0.52		-0.26	0.38		-0.47	0.14	

Analyses regarding: >north<

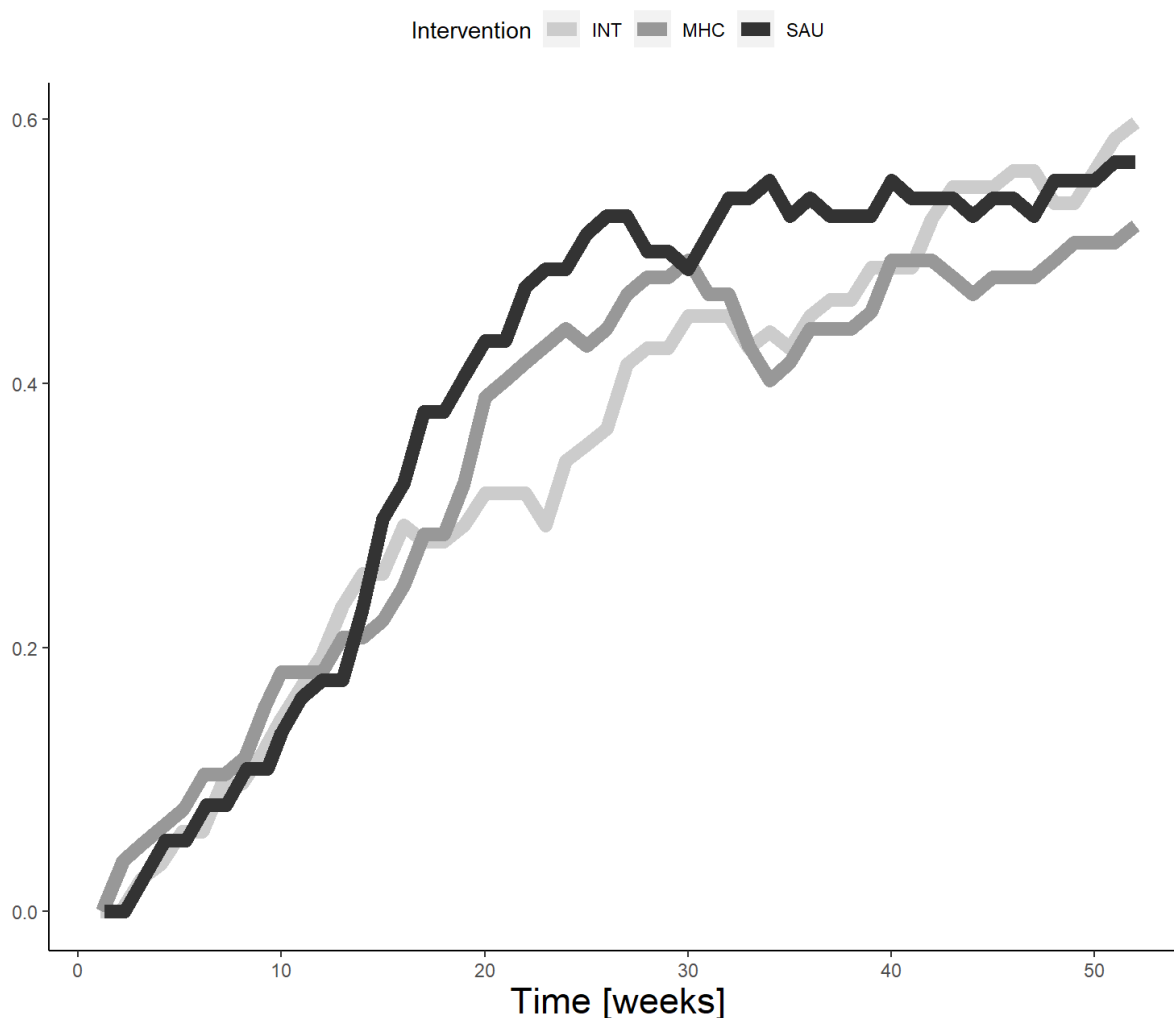
Kaplan Meier-curve at 12-month follow-up regarding: north

Time to stable return-to-work



Proportion over time-curve at 12-month follow-up regarding: north<

Proportion in stable work, per week



Vocational outcomes at 12-month follow-up from subgroup >north< in RCT1

	Group values			SAU-MHC			SAU-INT			MHC-INT					
	INT	MHC	SAU	Est.	p	low CI:high CI	Est.	p	low CI:high CI	Est.	p	low CI:high CI			
RTW, FU12 [weeks, HR]	30	27	23	1.13	0.54	0.7	1.83	1.16	0.44	0.73	1.86	1.02	0.93	0.64	1.63
RTW, FU6 [HR]				1.26	0.3	0.73	2.18	1.5	0.07	0.86	2.62	1.2	0.45	0.68	2.12
PROP, FU12 [% , OR]	61.2	51.9	56.8	1.23	0.54	0.54	2.81	0.81	0.54	0.35	1.86	0.65	0.2	0.29	1.47
WEEKS, FU12 [weeks, RR]	18.6	18.6	20.6	1.11	0.43	0.8	1.55	1.12	0.42	0.81	1.54	0.99	0.96	0.7	1.4

Self-reported outcomes at 6- and 12-month follow-up regarding: north

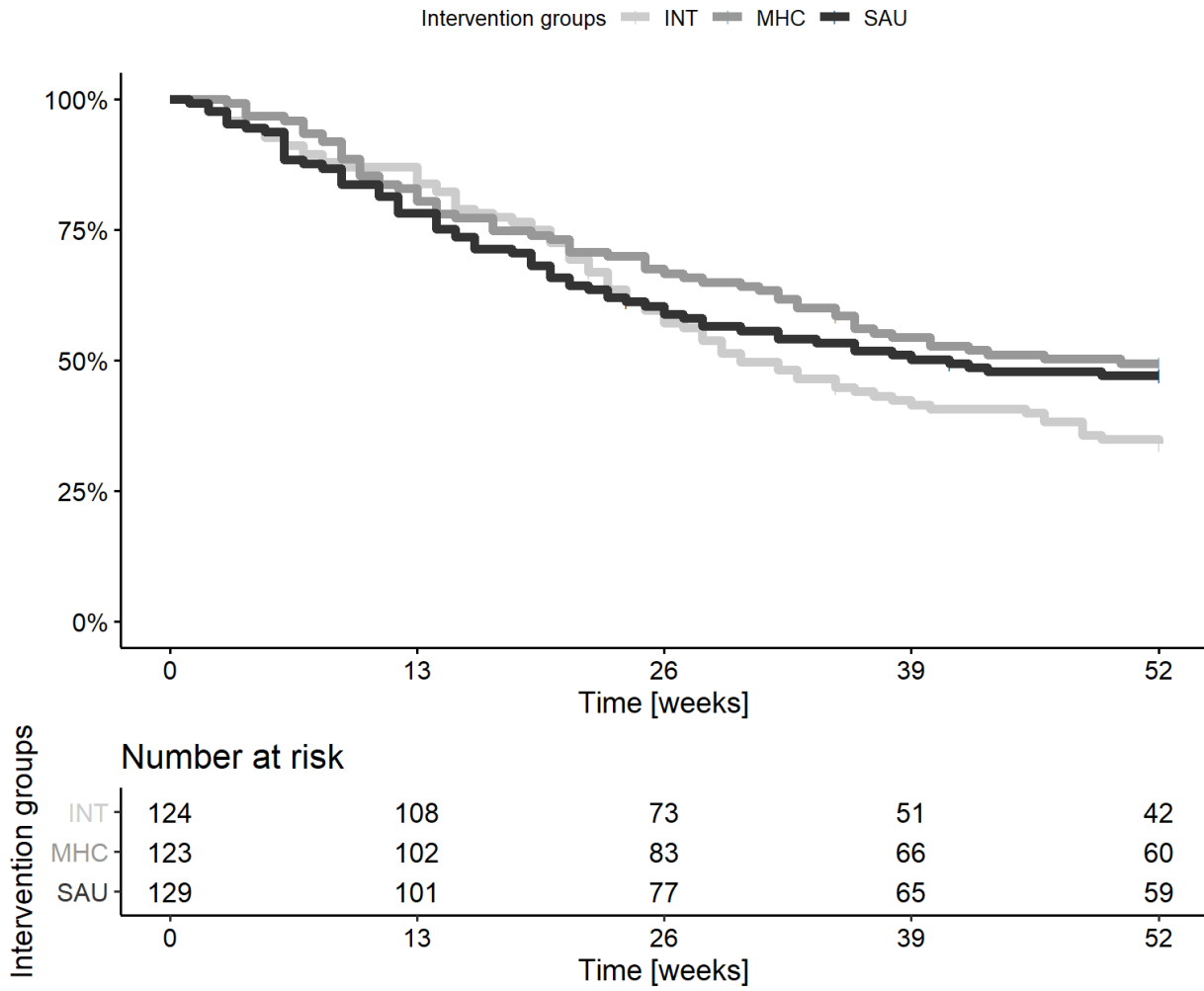
	Group values			SAU-MHC			SAU-INT			MHC-INT					
	INT (SD)	MHC (SD)	SAU (SD)	Est.	p	low CI	high CI	Est.	p	low CI	high CI	Est.	p	low CI	high CI
BAI [FU6]	12.46 (8.65)	13.89 (8.99)	12.66 (8.33)	-0.99	0.5	-4.52	2.53	-0.18	0.9	-3.71	3.35	0.8	0.57	-2.59	4.19
BDI [FU6]	12.71 (7.76)	12.82 (10.3)	13.67 (9.89)	0.75	0.63	-2.98	4.47	0.54	0.7	-2.88	3.96	-0.25	0.86	-3.76	3.26
PSS [FU6]	16.58 (7.15)	15.94 (6.84)	17.08 (6.45)	0.89	0.39	-1.57	3.34	0.2	0.84	-2.21	2.6	-0.7	0.48	-3.1	1.7
KES [FU6]	67.26(16.61)	66.83(18.14)	66.69(17.13)	-0.27	0.91	-6.29	5.74	-0.32	0.9	-6.15	5.52	-0.1	0.97	-5.82	5.63
DSQ-som. [FU6]	9.06 (5.61)	10.39 (6.39)	8.44 (5.48)	-1.47	0.17	-4.04	1.1	-1.08	0.3	-3.59	1.43	0.35	0.74	-2.19	2.89
DSQ-distr. [FU6]	13.27 (7.6)	13.85 (7.97)	13.55 (8)	-0.55	0.64	-3.36	2.26	-0.02	0.99	-2.74	2.7	0.51	0.65	-2.2	3.23

	Group values			SAU-MHC			SAU-INT			MHC-INT						
	INT	MHC	SAU	Est.	p	low CI	high CI	Est.	p	low CI	high CI	Est.	p	low CI	high CI	
	(SD)	(SD)	(SD)													
DSQ-anx. [FU6]	3.56 (4.39)	4.43 (5.24)	3.48 (3.93)	-0.56		0.5	-2.58	1.46	-0.03	0.97	-1.95	1.89	0.56	0.5	-1.45	2.57
DSQ-depr. [FU6]	1.9 (2.49)	1.57 (2.39)	2.03 (2.91)	0.21		0.66	-0.94	1.35	0.05	0.91	-1.07	1.18	-0.17	0.71	-1.27	0.94
WSAS [FU6]	14.7(10.39)	13.92 (10.5)	14(11.48)	-0.07		0.96	-3.79	3.65	-0.8	0.59	-4.4	2.79	-0.74	0.62	-4.29	2.82
SPS [FU6]	19.41 (2.7)	20.07 (2.33)	19.59 (4.87)	0.14		0.66	-0.62	0.9	0.16	0.59	-0.56	0.89	0.04	0.88	-0.63	0.71
IPQ [FU6]	16.79 (3.33)	17 (3.54)	15.83 (3.86)	-0.91		0.13	-2.37	0.55	-0.88	0.13	-2.27	0.51	0.03	0.96	-1.34	1.4
GSS [FU6]	26.32 (5.95)	26.05 (6.23)	26.07 (6.93)	0.33		0.76	-2.27	2.93	-0.1	0.92	-2.65	2.45	-0.44	0.67	-2.87	2
RTW-SE [FU6]	25.51 (8.4)	23.69 (9.22)	24.45 (9.46)	0.76		0.58	-2.54	4.05	-0.88	0.51	-4.06	2.31	-1.63	0.2	-4.67	1.42
QoLs [FU6]	71.22(15.05)	71.12(14.94)	70.72(15.67)	0.05		0.98	-5.54	5.63	0.04	0.99	-5.38	5.45	-0.02	0.99	-5.32	5.29
EQ5 [FU6]	0.79 (0.13)	0.76 (0.19)	0.77 (0.16)	0.01		0.62	-0.05	0.07	-0.01	0.72	-0.06	0.05	-0.02	0.41	-0.08	0.04
IS [FU6]	27.12 (4.69)	25.23 (4.69)	21.83 (6.3)	-2.78	**0.0055	-5.17	-0.39	-4.47	**0	-6.84	-2.11	-1.62	0.06	-3.69	0.45	
BAI [FU12]	11.78 (8.28)	12.96 (9.09)	12.2 (9.66)	-0.5		0.6	-2.73	1.74	0.29	0.76	-1.96	2.54	0.82	0.37	-1.39	3.03
BDI [FU12]	10.58(10.03)	11.81 (9.31)	11.47 (9.66)	-0.66		0.53	-3.17	1.84	-0.12	0.9	-2.58	2.34	0.56	0.58	-1.88	3
PSS [FU12]	15.48 (7.76)	14.98 (7.19)	14.46 (6.99)	-0.74		0.34	-2.6	1.13	-0.37	0.64	-2.27	1.52	0.37	0.64	-1.52	2.25
KES [FU12]	58.34(18.51)	57.94(18.99)	58.52(18.18)	-0.32		0.91	-7.03	6.39	-0.24	0.93	-6.81	6.33	0.07	0.98	-6.27	6.41
DSQ-som. [FU12]	10.11 (7.25)	10.51 (6.55)	8.51 (6.16)	-1.54		0.15	-4.14	1.05	-1.19	0.27	-3.8	1.42	0.33	0.76	-2.26	2.92
DSQ-distr. [FU12]	12.6 (8.33)	12.31 (6.74)	11.4 (7.75)	-0.84		0.49	-3.79	2.11	-0.7	0.57	-3.66	2.27	0.13	0.91	-2.67	2.94
DSQ-anx. [FU12]	3.62 (4.55)	3.87 (5.31)	3.17 (4.19)	-0.51		0.52	-2.45	1.42	-0.55	0.48	-2.45	1.35	0.01	0.99	-1.97	1.98
DSQ-depr. [FU12]	1.7 (2.57)	1.6 (2.1)	1.21 (2.22)	-0.33		0.48	-1.44	0.78	-0.37	0.42	-1.48	0.74	-0.05	0.91	-1.12	1.02
WSAS [FU12]	12.59(10.26)	12.56(11.43)	11.56(10.54)	-0.96		0.38	-3.56	1.64	-0.24	0.82	-2.8	2.32	0.77	0.46	-1.73	3.26
SPS [FU12]	19.5 (3.31)	19.62 (2.77)	19.94 (2.57)	0.06		0.87	-0.86	0.99	-0.34	0.37	-1.23	0.56	-0.37	0.29	-1.21	0.47
IPQ [FU12]	16.52 (3.98)	17.19 (3.85)	16.54 (4.05)	-0.5		0.47	-2.16	1.16	-0.14	0.83	-1.74	1.45	0.36	0.57	-1.17	1.89
GSS [FU12]	28.6 (6.43)	27.76 (7.28)	28.42 (6.69)	0.64		0.59	-2.21	3.49	-0.13	0.91	-2.86	2.6	-0.77	0.48	-3.37	1.83
RTW-SE [FU12]	27.65 (9.21)	25.62(10.88)	28.5 (8.73)	2.56		0.09	-1.02	6.14	0.62	0.67	-2.82	4.05	-1.96	0.16	-5.32	1.4
QoLs [FU12]	73.2(15.53)	74.63(14.57)	71.92(17.72)	-1.66		0.5	-7.52	4.2	-0.8	0.75	-6.78	5.19	0.82	0.73	-4.84	6.48
EQ5 [FU12]	0.79 (0.19)	0.79 (0.17)	0.81 (0.14)	0.01		0.62	-0.05	0.08	0.01	0.56	-0.05	0.08	0	0.96	-0.06	0.07

Analyses regarding: >city<

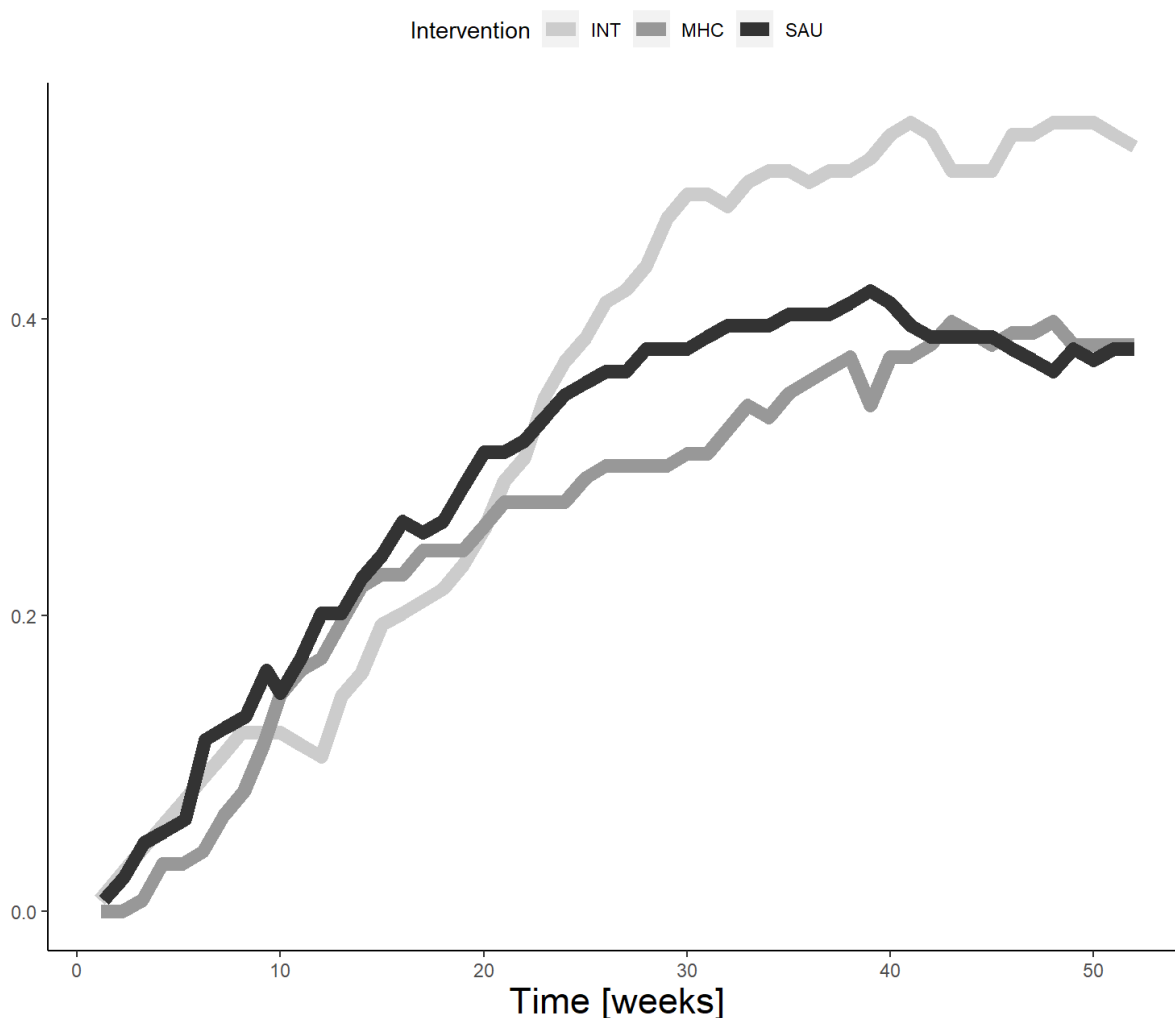
Kaplan Meier-curve at 12-month follow-up regarding: city

Time to stable return-to-work



Proportion over time-curve at 12-month follow-up regarding: city<

Proportion in stable work, per week



Vocational outcomes at 12-month follow-up from subgroup >city< in RCT1

	Group values			SAU-MHC				SAU-INT				MHC-INT				
	INT	MHC	SAU	Est.	p	low CI	high CI	Est.	p	low CI	high CI	Est.	p	low CI	high CI	
RTW, FU12 [weeks, HR]	30.0	50.0	41.0	1.15	0.44	0.75	1.75	0.82	0.23	0.55	1.22	0.70	*0.03	0.24	0.46	1.05
RTW, FU6 [HR]				1.33	0.17	0.81	2.20	1.04	0.84	0.65	1.66	0.78	0.22	0.47	1.28	
PROP, FU12 [%, OR]	52.9	38.5	38.3	0.99	0.98	0.53	1.87	0.54	*0.01	0.18	0.28	1.02	0.55	*0.02	0.27	1.04
WEEKS, FU12 [weeks, RR]	18.1	14.1	15.9	1.12	0.43	0.80	1.57	0.88	0.33	0.65	1.20	0.79	0.08	0.57	1.09	

Self-reported outcomes at 6- and 12-month follow-up regarding: city

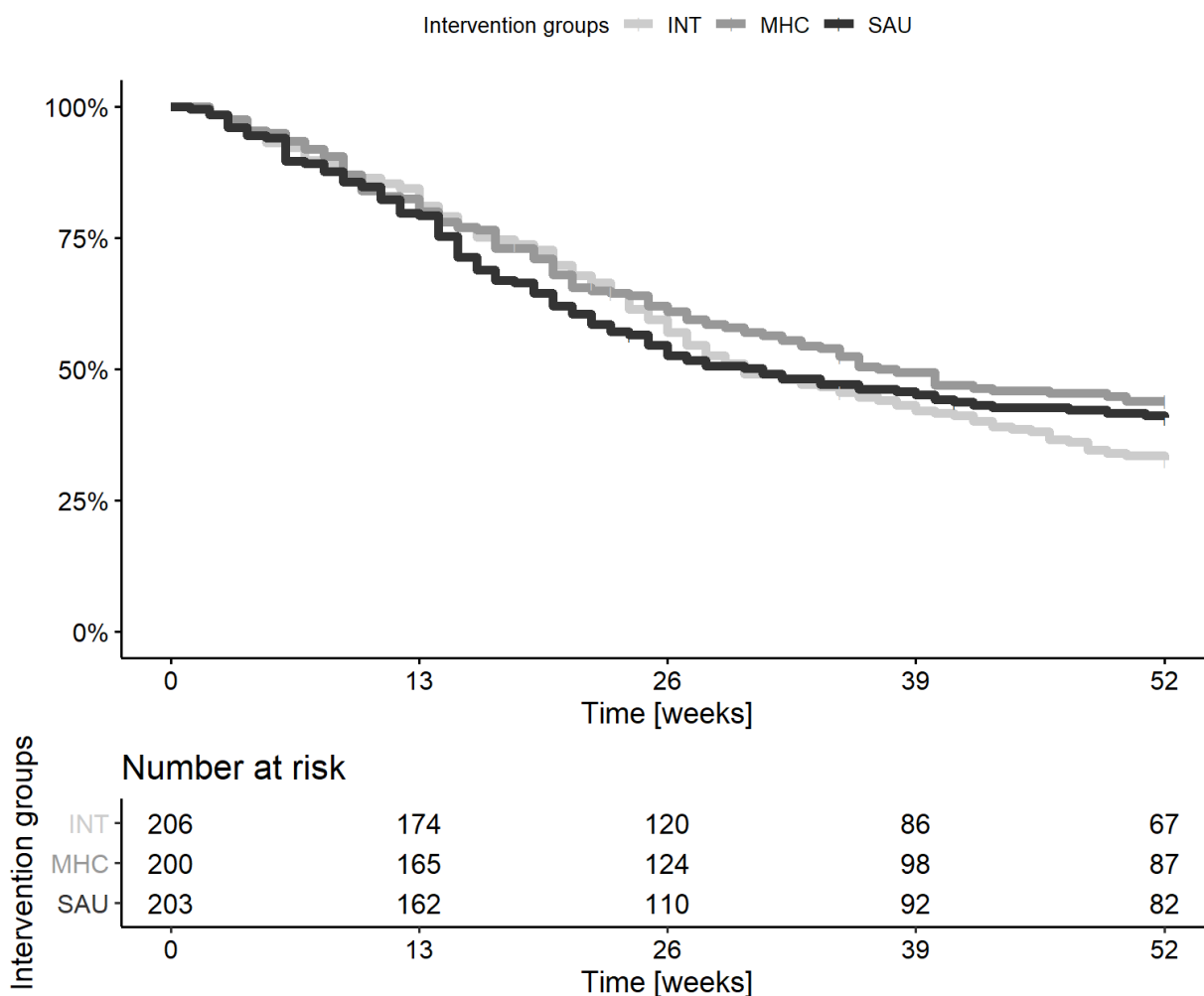
	Group values			SAU-MHC				SAU-INT				MHC-INT					
	INT (SD)	MHC (SD)	SAU (SD)	Est.	p	low CI	high CI	Est.	p	low CI	high CI	Est.	p	low CI	high CI		
BAI [FU6]	12.64 (8.54)	12.27 (9.09)	15.15 (9.96)	2.44	0.06	-0.69	5.56	2.16	0.08	-0.78	5.1	-0.26	0.83	-3.16	2.65		
BDI [FU6]	12.37 (9.8)	12.83 (9.53)	14.86(11.83)	1.63	0.22	-1.58	4.85	1.91	0.15	-1.29	5.1	0.28	0.83	-2.75	3.3		
PSS [FU6]	16.47 (7.57)	16.58 (7.16)	19.14 (7.77)	2.13	*0.01	0.76	-0.02	4.28	2.23	*0.01	0.58	0.02	4.43	0.09	0.92	-2.03	2.22
KES [FU6]	64.91(18.56)	67.74(17.79)	72.05(19.65)	3.39	0.1	-1.51	8.29	5.95	*0.00	0.42	0.99	10.91	2.58	0.21	-2.4	7.57	
DSQ-som. [FU6]	9.32 (6.64)	8.79 (6.53)	11.25 (7.25)	2.01	*0.02	0.81	-0.18	4.19	1.75	*0.04	-0.34	3.84	-0.25	0.78	-2.38	1.88	

	Group values			SAU-MHC				SAU-INT				MHC-INT			
	INT (SD)	MHC (SD)	SAU (SD)	Est.	p	low CI	high CI	Est.	p	low CI	high CI	Est.	p	low CI	high CI
DSQ-distr. [FU6]	12.9 (8.06)	13.68 (7.63)	14.59 (8.97)	0.84		0.38	-1.47 3.14	1.47		0.14	-0.9 3.84	0.63		0.5	-1.59 2.85
DSQ-anx. [FU6]	4.1 (4.77)	4.22 (4.85)	5.15 (5.94)	0.87		0.25	-0.94 2.68	0.94		0.21	-0.84 2.72	0.09		0.9	-1.61 1.79
DSQ-depr. [FU6]	1.61 (2.7)	1.98 (2.76)	3.04 (3.6)	0.78		0.06	-0.22 1.79	1.04	**0.0142	0.03	2.06	0.26		0.52	-0.72 1.24
WSAS [FU6]	12.61 (9.62)	15.6(10.68)	15.74(10.17)	-0.06		0.96	-3.03 2.92	2.46	*0.0412	-0.43	5.35	2.53	*0.0338	-0.33	5.39
SPS [FU6]	19.69 (3.1)	19.69 (2.85)	19.56 (2.68)	0.14		0.66	-0.62 0.9	0.16		0.59	-0.56 0.89	0.04		0.88	-0.63 0.71
IPQ [FU6]	17.69 (3.24)	16.81 (3.8)	15.87 (4.24)	-0.7		0.17	-1.92 0.52	-1.49	**0.0022	-2.66	-0.33	-0.79		0.1	-1.93 0.35
GSS [FU6]	27 (7.16)	26.44 (7.06)	25.28 (7.27)	-1.09		0.22	-3.22 1.05	-1.7		0.06	-3.86 0.47	-0.62		0.49	-2.77 1.52
RTW-SE [FU6]	25.83 (9.52)	24.14 (9.13)	23.78(10.04)	-0.05		0.96	-2.61 2.51	-1.67		0.13	-4.31 0.97	-1.62		0.13	-4.18 0.94
QoLs [FU6]	69.05(14.56)	68.69(15.08)	66.43(16.11)	-1.51		0.42	-5.97 2.95	-1.7		0.35	-6.05 2.65	-0.22		0.91	-4.63 4.2
EQ5 [FU6]	0.79 (0.16)	0.79 (0.13)	0.76 (0.16)	-0.02		0.22	-0.07 0.02	-0.02		0.3	-0.07 0.03	0		0.87	-0.05 0.05
IS [FU6]	26.65 (4.36)	25.44 (5.33)	18.8 (5.67)	-4.74		**0	-6.75 -2.72	-5.78		**0	-7.68 -3.87	-1.05		0.13	-2.73 0.64
BAI [FU12]	12.24 (9.57)	11.33 (8.81)	12.42 (9.02)	2.03	**0.014	0.05	4	1.24		0.12	-0.7 3.18	-0.8		0.31	-2.68 1.09
BDI [FU12]	11.53(10.99)	12.2(10.34)	13.12(12.49)	0.56		0.54	-1.6 2.71	0.75		0.4	-1.38 2.87	0.19		0.82	-1.86 2.23
PSS [FU12]	15.54 (7.91)	16.66 (7.2)	16.74 (7.89)	0.96		0.15	-0.64 2.55	1.17		0.07	-0.39 2.73	0.21		0.75	-1.35 1.77
KES [FU12]	57.31(19.51)	60.75(19.01)	61.77 (20.9)	1.64		0.47	-3.85 7.14	3.52		0.12	-1.87 8.91	1.89		0.4	-3.5 7.28
DSQ-som. [FU12]	9.65 (6.82)	8.74 (6.21)	10.15 (6.8)	1.59		0.08	-0.59 3.77	0.9		0.3	-1.2 3.01	-0.68		0.43	-2.77 1.41
DSQ-distr. [FU12]	12.18 (7.98)	13.55 (8.14)	13.78 (9.1)	0.15		0.88	-2.3 2.61	1.08		0.29	-1.38 3.54	0.93		0.34	-1.42 3.28
DSQ-anx. [FU12]	3.23 (3.86)	4.05 (4.76)	3.81 (5)	0.16		0.82	-1.59 1.92	0.79		0.26	-0.91 2.5	0.63		0.35	-0.99 2.26
DSQ-depr. [FU12]	1.51 (2.7)	1.89 (2.57)	2.63 (3.62)	0.57		0.17	-0.43 1.58	0.76		0.07	-0.25 1.76	0.18		0.64	-0.76 1.12
WSAS [FU12]	11.33 (9.5)	12.94(10.13)	12.58(10.61)	0.32		0.72	-1.83 2.48	0.46		0.6	-1.67 2.59	0.1		0.91	-1.99 2.19
SPS [FU12]	19.56 (3.4)	20.02 (3.5)	19 (4.22)	0.06		0.87	-0.86 0.99	-0.34		0.37	-1.23 0.56	-0.37		0.29	-1.21 0.47
IPQ [FU12]	17.69 (4.29)	16.94 (4.25)	16.28 (4.03)	-0.5		0.36	-1.81 0.81	-1.09	*0.041	-2.36	0.19	-0.59		0.25	-1.82 0.64
GSS [FU12]	27.95 (7.29)	27.28 (7.17)	26.51 (8.43)	-0.81		0.4	-3.12 1.5	-1.59		0.1	-3.93 0.74	-0.79		0.4	-3.04 1.47
RTW-SE [FU12]	28.44 (9.29)	26.67 (8.91)	26.79 (9.53)	-0.12		0.92	-2.93 2.68	-1.5		0.2	-4.32 1.32	-1.38		0.23	-4.13 1.37
QoLs [FU12]	73.19(15.87)	70.13(16.65)	70.79(16.11)	0.29		0.88	-4.54 5.13	-1.52		0.44	-6.3 3.25	-1.83		0.36	-6.6 2.94
EQ5 [FU12]	0.8 (0.13)	0.77 (0.15)	0.78 (0.17)	0		0.93	-0.05 0.05	-0.02		0.37	-0.07 0.03	-0.02		0.39	-0.07 0.03

Analyses regarding: >intteams<

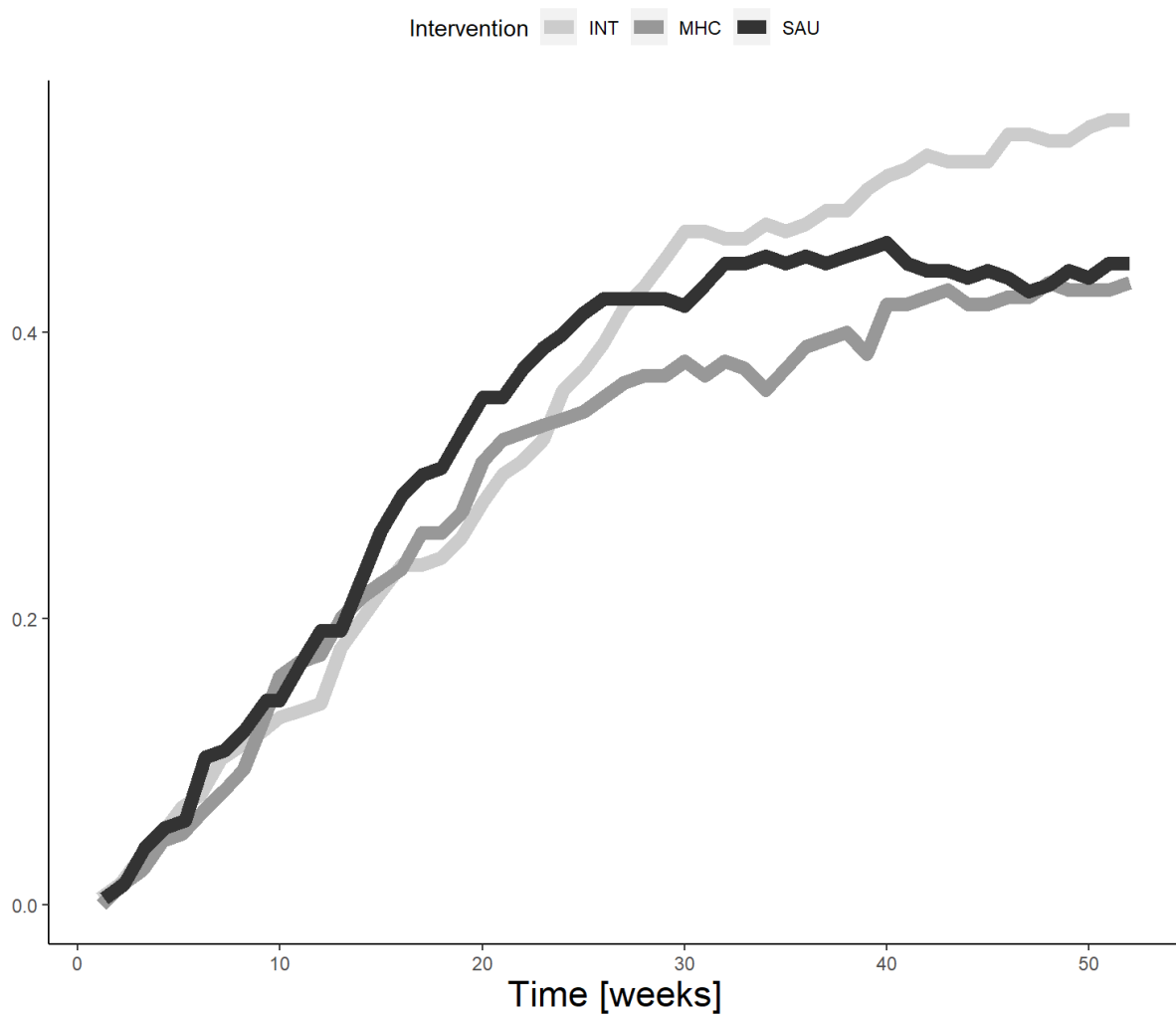
Kaplan Meier-curve at 12-month follow-up regarding: intteams

Time to stable return-to-work



Proportion over time-curve at 12-month follow-up regarding: intteams<

Proportion in stable work, per week



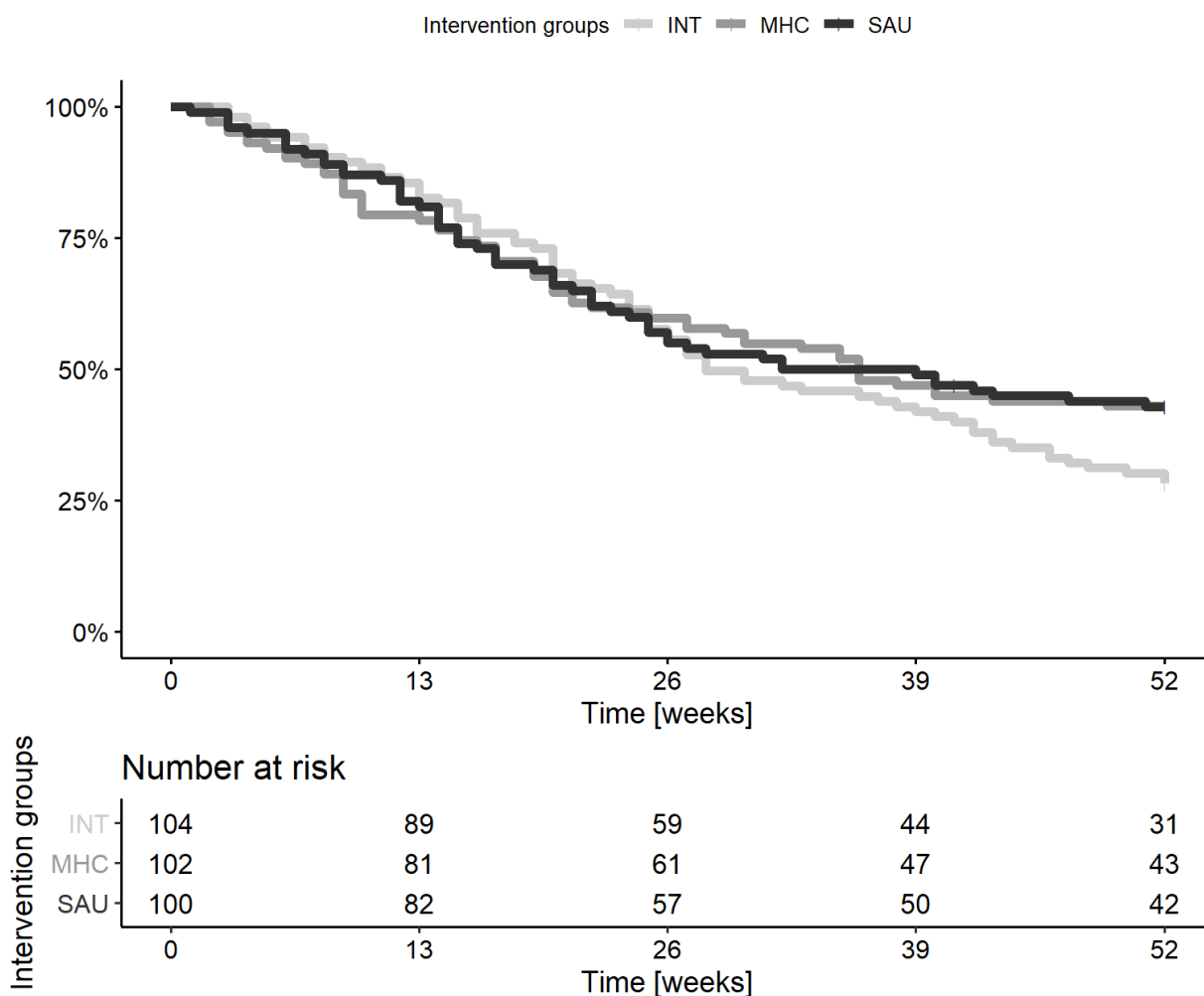
Vocational outcomes at 12-month follow-up from subgroup >intteams< in RCT1

	Group values			SAU-MHC				SAU-INT				MHC-INT				
	INT	MHC	SAU	Est.	p	low CI	high CI	Est.	p	low CI	high CI	Est.	p	low CI	high CI	
RTW, FU12 [weeks, HR]	30.0	37.0	31.0	1.15	0.43	0.75	1.75	0.82	0.22	0.55	1.21	0.70	*0.03	0.54	0.47	1.05
RTW, FU12 [weeks, HR]:teamnorth				0.98	0.95			1.46	0.14			1.45	0.15			
RTW, FU6 [HR]				1.34	0.16	0.81	2.21	1.04	0.85	0.65	1.66	0.78	0.23	0.47	1.28	
RTW, FU6 [HR]:teamnorth				0.93	0.81			1.46	0.21			1.54	0.17			
PROP, FU12 [% , OR]	56.2	43.7	45.0	0.99	0.98	0.53	1.88	0.54	*0.01	0.98	0.29	1.02	0.55	*0.02	0.47	1.04
PROP, FU12 [% , OR]:teamnorth				0.21	0.62			0.43	0.32			0.19	0.65			
WEEKS, FU12 [weeks, RR]	18.3	15.8	17.6	1.12	0.43	0.80	1.57	0.88	0.32	0.65	1.19	0.79	0.08	0.57	1.09	
WEEKS, FU12 [weeks, RR]:teamnorth				-0.01	0.98			0.23	0.2			0.23	0.23			

Analyses regarding: >first<

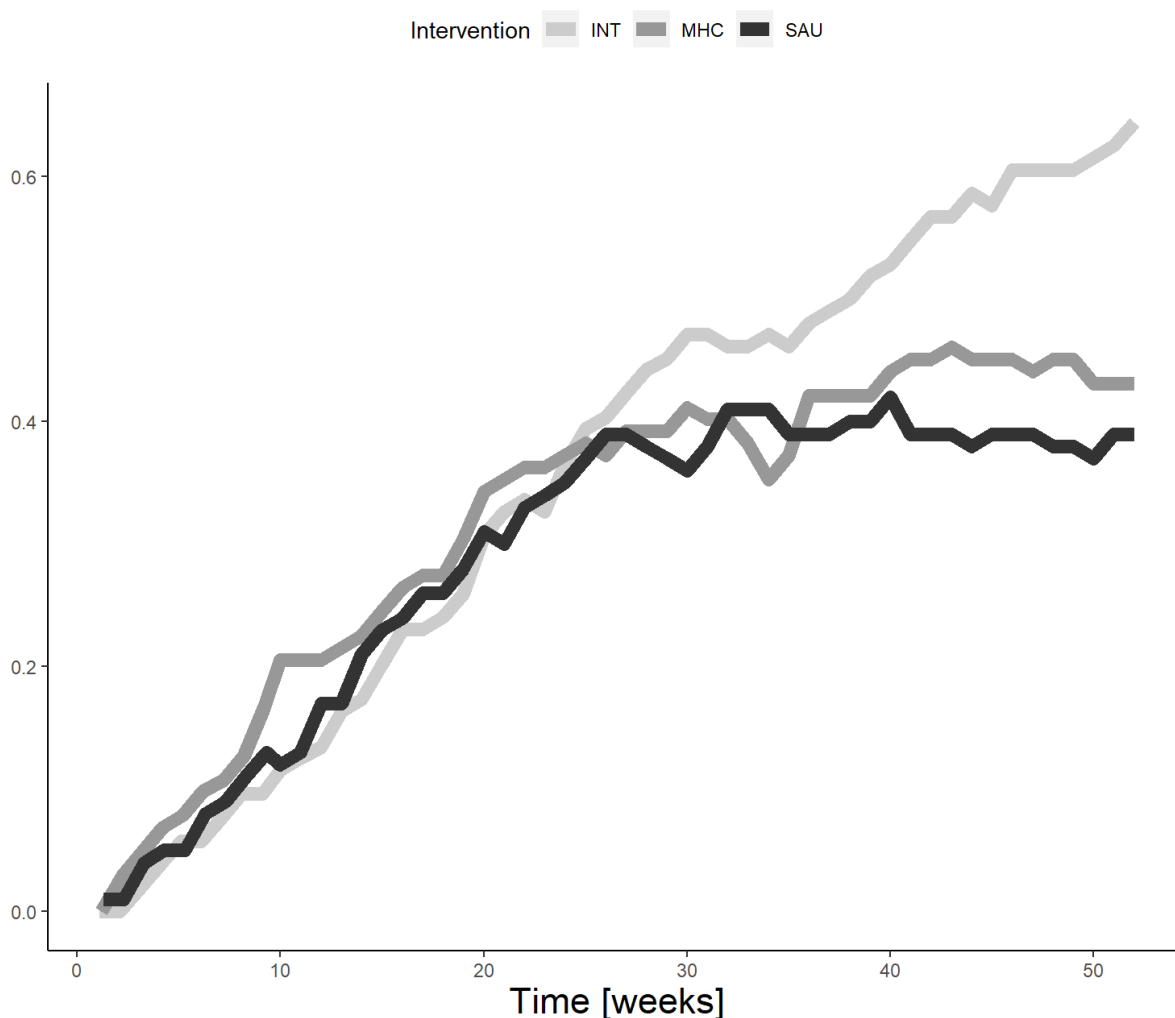
Kaplan Meier-curve at 12-month follow-up regarding: first

Time to stable return-to-work



Proportion over time-curve at 12-month follow-up regarding: first<

Proportion in stable work, per week



Vocational outcomes at 12-month follow-up from subgroup >first< in RCT1

	Group values			SAU-MHC				SAU-INT				MHC-INT			
	INT	MHC	SAU	Est.	p	low CI	high CI	Est.	p	low CI	high CI	Est.	p	low CI	high CI
RTW, FU12 [weeks, HR]	28.0	36.0	32.0	1.00	0.99	0.64	1.58	0.82	0.28	0.54	1.26	0.81	0.25	0.53	1.25
RTW, FU6 [HR]				1.13	0.58	0.67	1.90	1.08	0.71	0.65	1.80	0.96	0.84	0.57	1.61
PROP, FU12 [% , OR]	65.7	43.6	39.4	0.91	0.76	0.43	1.91	0.32	**2e-04	0.15	0.67	0.35	**7e-04	0.17	0.74
WEEKS, FU12 [weeks, RR]	18.9	17.0	15.5	0.95	0.74	0.68	1.34	0.83	0.17	0.60	1.15	0.89	0.35	0.65	1.21

Self-reported outcomes at 6- and 12-month follow-up regarding: first

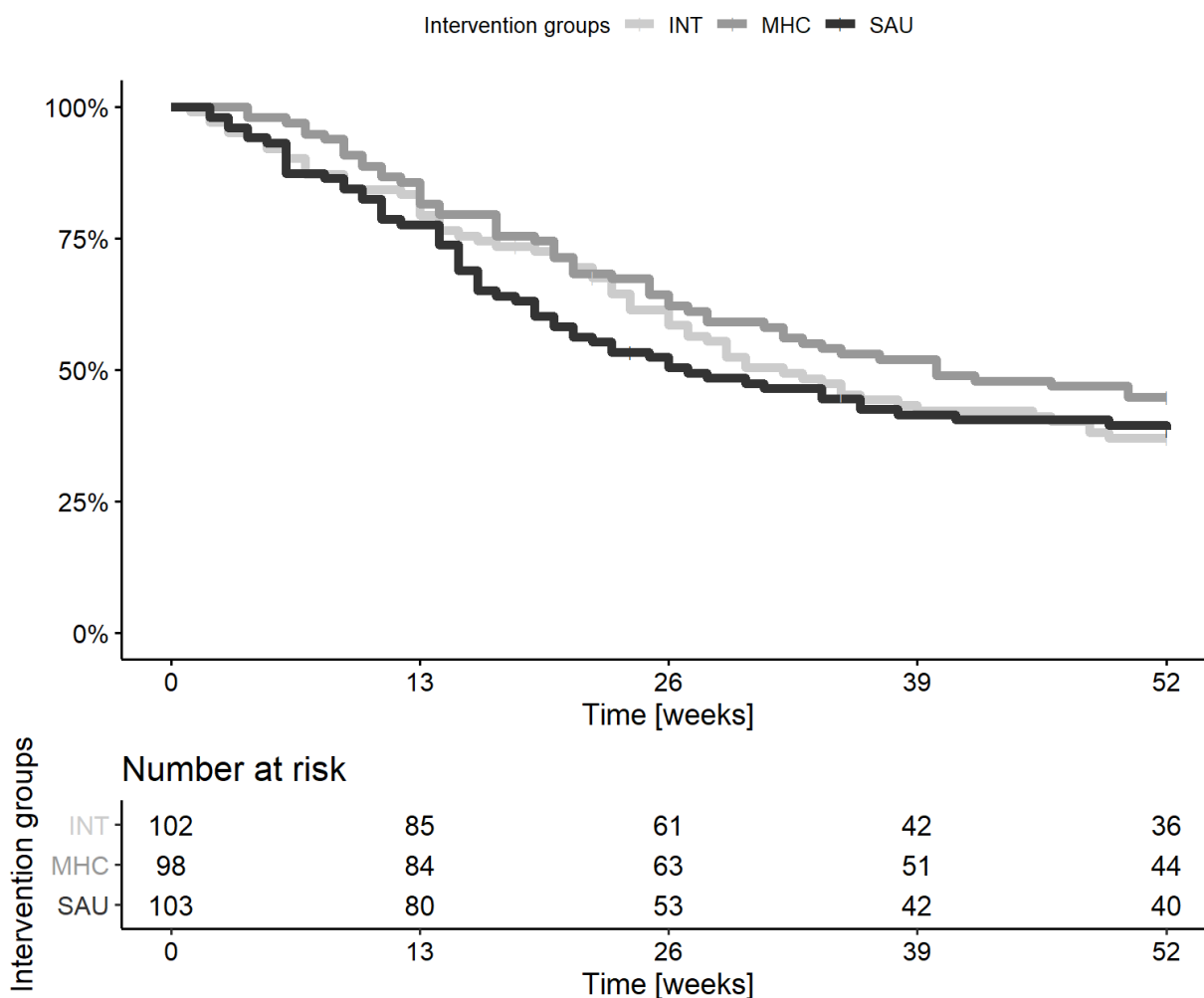
	Group values			SAU-MHC				SAU-INT				MHC-INT			
	INT (SD)	MHC (SD)	SAU (SD)	Est.	p	low CI	high CI	Est.	p	low CI	high CI	Est.	p	low CI	high CI
BAI [FU6]	13.54 (9.36)	13.25 (9.43)	15.26 (9.57)	1.46	0.27	-1.75	4.67	1.2	0.36	-1.98	4.38	-0.49	0.71	-3.65	2.67
BDI [FU6]	12.9 (9.34)	12.26(10.07)	15.68(12.13)	2.58	0.08	-0.92	6.08	2.05	0.15	-1.35	5.46	-0.62	0.65	-3.87	2.64
PSS [FU6]	16.49 (7.69)	16.39 (6.71)	19.26 (7.63)	2.14	*0.0255	-0.16	4.44	2.24	*0.0247	-0.15	4.64	-0.02	0.98	-2.26	2.22
KES [FU6]	67.87(18.85)	65.84 (18.4)	74.04(19.01)	5.91	**0.01	0.42	11.39	4.88	*0.0358	-0.69	10.45	-1.41	0.53	-6.79	3.96
DSQ-som. [FU6]	9.84 (5.86)	9.56 (6.31)	10.2 (6.81)	0.44	0.65	-1.92	2.81	0.01	0.99	-2.21	2.22	-0.55	0.57	-2.89	1.79

	Group values			SAU-MHC			SAU-INT			MHC-INT					
	INT (SD)	MHC (SD)	SAU (SD)	Est.	p	low CI	high CI	Est.	p	low CI	high CI	Est.	p	low CI	high CI
DSQ-distr. [FU6]	13.64 (7.83)	12.96 (7.6)	15.45 (8.88)	1.77	0.09	-0.76	4.31	1.2	0.26	-1.37	3.77	-0.68	0.5	-3.09	1.72
DSQ-anx. [FU6]	4.11 (4.93)	4.16 (4.56)	5.17 (5.56)	0.78	0.3	-1.03	2.58	0.74	0.34	-1.11	2.59	-0.14	0.85	-1.93	1.66
DSQ-depr. [FU6]	1.61 (2.51)	1.67 (2.69)	2.97 (3.45)	0.88	0.05	-0.2	1.95	1.01	*0.0174	-0.01	2.03	0.09	0.83	-0.92	1.1
WSAS [FU6]	13.29(10.65)	15.36(10.72)	16.76(11.12)	0.72	0.6	-2.6	4.04	2.73	*0.0482	-0.58	6.05	1.87	0.16	-1.31	5.06
SPS [FU6]	19.61 (3.07)	20.09 (2.57)	20 (3.93)	0.13	0.68	-0.62	0.89	0.12	0.68	-0.6	0.85	0	0.99	-0.67	0.66
IPQ [FU6]	17.04 (3.28)	16.55 (3.79)	14.84 (4.15)	-1.28	*0.0218	-2.61	0.06	-1.84	**6e-04	-3.11	-0.57	-0.48	0.35	-1.71	0.75
GSS [FU6]	26.22 (6.86)	26.89 (6.23)	24.32 (7.31)	-1.87	0.06	-4.27	0.52	-1.48	0.13	-3.83	0.88	0.47	0.62	-1.77	2.71
RTW-SE [FU6]	25.47 (9.4)	24.39 (8.94)	22.99(10.26)	-0.89	0.46	-3.76	1.98	-2.1	0.09	-5.04	0.83	-1.12	0.33	-3.87	1.63
QoLs [FU6]	70.62(14.62)	71.92(13.21)	65.73(16.78)	-3.99	0.05	-8.88	0.9	-3.28	0.11	-8.19	1.63	0.89	0.65	-3.79	5.57
EQ5 [FU6]	0.78 (0.14)	0.79 (0.16)	0.74 (0.18)	-0.03	0.19	-0.08	0.02	-0.03	0.13	-0.09	0.02	0	1	-0.05	0.05
IS [FU6]	27.21 (4.44)	25.15 (5.15)	20.38 (5.57)	-3.6	**0	-5.66	-1.54	-5.41	**0	-7.39	-3.43	-1.76	*0.02	-3.58	0.05
BAI [FU12]	12.82 (9.93)	12.13 (8.39)	12.67 (9.83)	1.27	0.14	-0.79	3.34	0.25	0.78	-1.86	2.35	-1.05	0.22	-3.08	0.99
BDI [FU12]	11.99(11.59)	9.99 (7.78)	13.11 (12.4)	0.71	0.47	-1.65	3.07	0.2	0.84	-2.12	2.51	-0.52	0.57	-2.74	1.69
PSS [FU12]	15.13 (7.65)	14.77 (6.31)	15.09 (8.18)	0.02	0.98	-1.68	1.72	-0.07	0.92	-1.78	1.64	-0.12	0.86	-1.76	1.52
KES [FU12]	58.36 (19.9)	56(17.09)	61.91(20.81)	3.6	0.15	-2.44	9.65	1.86	0.47	-4.28	7.99	-2.1	0.4	-8.04	3.85
DSQ-som. [FU12]	10.32 (7.58)	9.46 (6.41)	9.75 (7.15)	0.02	0.99	-2.4	2.44	-0.46	0.64	-2.83	1.9	-0.6	0.55	-2.97	1.78
DSQ-distr. [FU12]	12.32 (8.45)	11.06 (6.15)	12.26 (8.81)	0.61	0.58	-2.05	3.27	0.1	0.93	-2.62	2.83	-0.63	0.55	-3.15	1.9
DSQ-anx. [FU12]	3.39 (4.41)	3.47 (4.3)	3.42 (4.46)	0.05	0.94	-1.7	1.81	0.01	0.99	-1.81	1.84	-0.13	0.86	-1.87	1.61
DSQ-depr. [FU12]	1.68 (2.66)	1.27 (1.85)	1.9 (2.73)	0.44	0.31	-0.6	1.48	0.19	0.65	-0.83	1.22	-0.29	0.47	-1.24	0.66
WSAS [FU12]	11.97(10.18)	11.57 (9.88)	12.31(10.45)	0.24	0.8	-2.09	2.57	-0.22	0.82	-2.56	2.13	-0.48	0.61	-2.74	1.79
SPS [FU12]	19.31 (3.82)	20 (3.03)	19.62 (2.51)	0.03	0.93	-0.9	0.97	-0.32	0.4	-1.21	0.58	-0.31	0.37	-1.15	0.53
IPQ [FU12]	16.9 (4.79)	17.45 (4.2)	16.48 (3.77)	-0.72	0.22	-2.14	0.7	-0.51	0.37	-1.9	0.87	0.29	0.62	-1.12	1.7
GSS [FU12]	28.48 (7.29)	28.09 (6.31)	27.48 (8.35)	-0.73	0.5	-3.34	1.88	-0.84	0.43	-3.37	1.69	-0.04	0.97	-2.43	2.36
RTW-SE [FU12]	28.25 (9.97)	27.02 (9.05)	28.24 (9.24)	0.81	0.52	-2.23	3.86	-0.34	0.79	-3.49	2.81	-1.05	0.39	-3.98	1.88
QoLs [FU12]	74.43(15.19)	75.34(12.35)	70.81(15.89)	-3	0.16	-8.08	2.08	-2.13	0.33	-7.43	3.17	1.04	0.61	-3.92	6.01
EQ5 [FU12]	0.8 (0.15)	0.8 (0.14)	0.79 (0.19)	-0.01	0.59	-0.07	0.04	-0.01	0.53	-0.07	0.04	0	0.93	-0.05	0.05

Analyses regarding: >last<

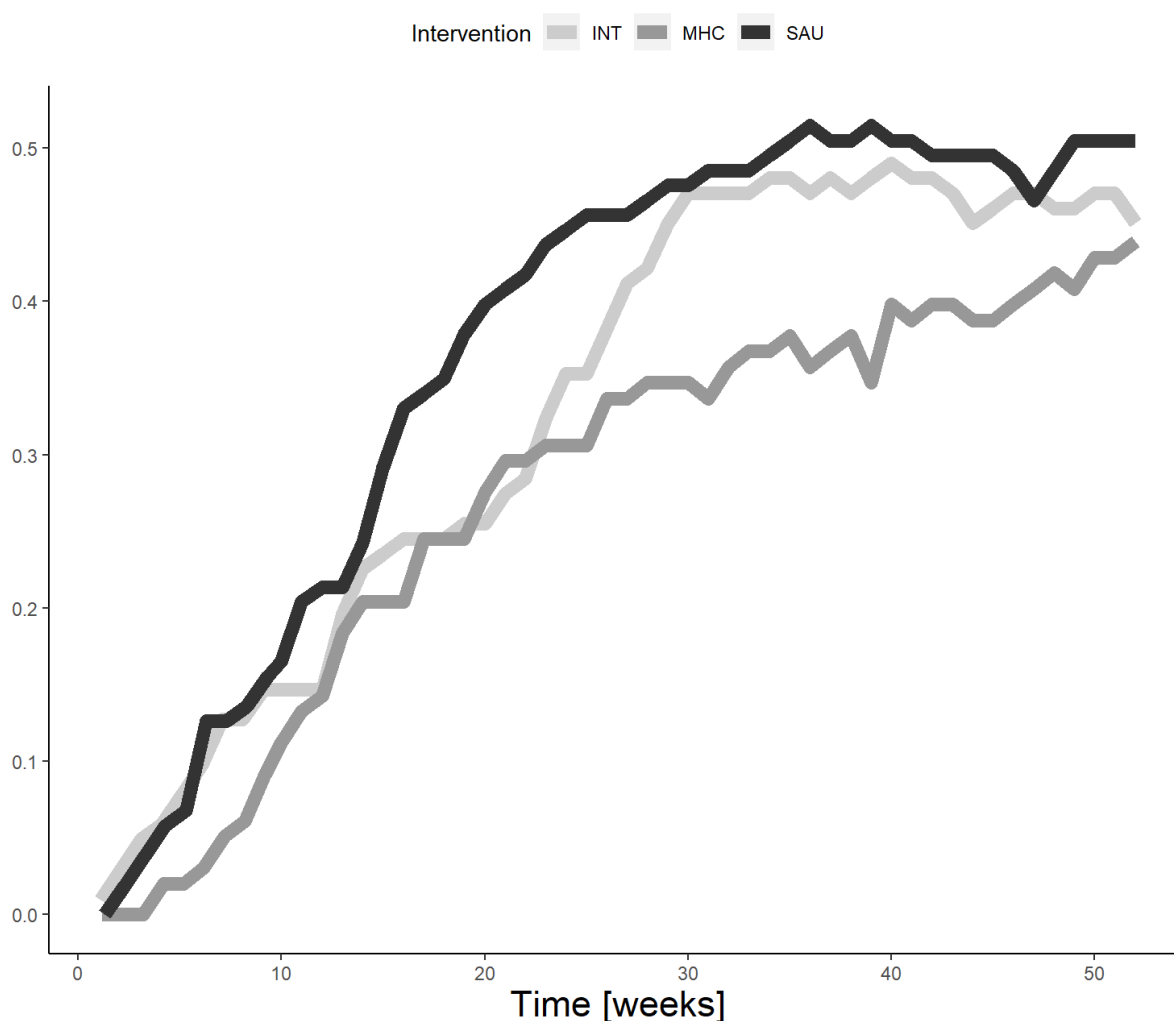
Kaplan Meier-curve at 12-month follow-up regarding: last

Time to stable return-to-work



Proportion over time-curve at 12-month follow-up regarding: last<

Proportion in stable work, per week



Vocational outcomes at 12-month follow-up from subgroup >last< in RCT1

	Group values			SAU-MHC				SAU-INT				MHC-INT			
	INT	MHC	SAU	Est.	p	low CI	high CI	Est.	p	low CI	high CI	Est.	p	low CI	high CI
RTW, FU12 [weeks, HR]	32.0	40.0	27.0	1.35	0.11	0.86	2.13	1.13	0.49	0.73	1.75	0.82	0.28	0.52	1.28
RTW, FU6 [HR]				1.58	*0.0364	0.93	2.68	1.38	0.13	0.83	2.29	0.89	0.60	0.51	1.53
PROP, FU12 [% , OR]	46.5	43.9	50.5	1.32	0.34	0.65	2.67	1.24	0.47	0.60	2.57	0.92	0.79	0.45	1.88
WEEKS, FU12 [weeks, RR]	17.7	14.6	19.7	1.36	*0.0323	0.96	1.92	1.14	0.29	0.84	1.55	0.83	0.21	0.59	1.18

Self-reported outcomes at 6- and 12-month follow-up regarding: last

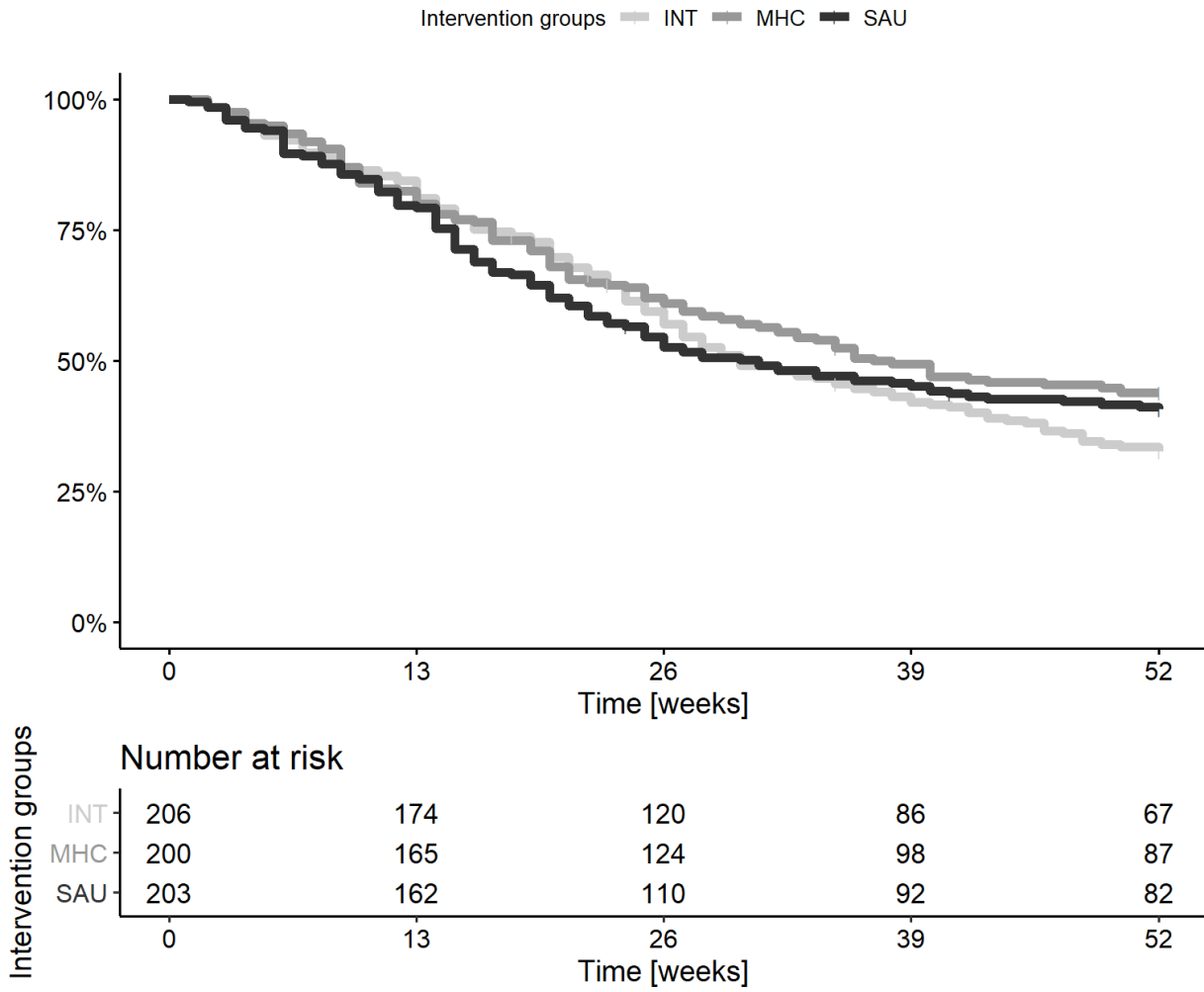
	Group values			SAU-MHC				SAU-INT				MHC-INT			
	INT (SD)	MHC (SD)	SAU (SD)	Est.	p	low CI	high CI	Est.	p	low CI	high CI	Est.	p	low CI	high CI
BAI [FU6]	11.57 (7.58)	12.54 (8.71)	13.07 (9.16)	0.64	0.65	-2.79	4.07	1.35	0.32	-1.91	4.62	0.85	0.52	-2.29	3.98
BDI [FU6]	12.1 (8.73)	13.4 (9.55)	13.11 (9.86)	-0.19	0.89	-3.54	3.17	0.67	0.63	-2.65	3.98	0.83	0.53	-2.32	3.98
PSS [FU6]	16.53 (7.1)	16.27 (7.38)	17.4 (6.94)	1.12	0.24	-1.18	3.41	0.69	0.47	-1.61	2.99	-0.41	0.66	-2.68	1.86
KES [FU6]	63.84(16.63)	68.89(17.32)	65.74(17.77)	-2.31	0.29	-7.51	2.88	2.16	0.32	-3.02	7.33	4.47	*0.0364	0.65	9.59
DSQ-som. [FU6]	8.64 (6.58)	9.23 (6.72)	10.04 (6.67)	0.8	0.42	-1.58	3.17	1.31	0.18	-1.02	3.64	0.54	0.56	-1.72	2.8
DSQ-distr. [FU6]	12.42 (7.9)	14.52 (7.84)	12.89 (8.13)	-1.32	0.2	-3.78	1.14	0.58	0.57	-1.89	3.05	1.85	0.07	-0.58	4.28

	Group values			SAU-MHC				SAU-INT				MHC-INT				
	INT (SD)	MHC (SD)	SAU (SD)	Est.	p	low CI	high CI	Est.	p	low CI	high CI	Est.	p	low CI	high CI	
DSQ-anx. [FU6]	3.67 (4.3)	4.44 (5.41)	3.8 (4.94)	-0.26	0.75	-2.26	1.74	0.39	0.62	-1.49	2.27	0.73		0.35	-1.13	2.6
DSQ-depr. [FU6]	1.84 (2.73)	1.99 (2.57)	2.28 (3.27)	0.19	0.67	-0.87	1.25	0.3	0.51	-0.79	1.39	0.1		0.82	-0.96	1.15
WSAS [FU6]	13.6 (9.24)	14.56(10.54)	13.28(10.03)	-0.99	0.45	-4.19	2.2	-0.3	0.81	-3.38	2.78	0.72		0.57	-2.32	3.77
SPS [FU6]	19.53 (2.78)	19.51 (2.8)	19.16 (3.61)	0.13	0.68	-0.62	0.89	0.12	0.68	-0.6	0.85	0		0.99	-0.67	0.66
IPQ [FU6]	17.66 (3.3)	17.21 (3.59)	16.88 (3.76)	-0.29	0.59	-1.59	1.01	-0.69	0.19	-1.97	0.58	-0.43		0.41	-1.69	0.83
GSS [FU6]	27.27 (6.56)	25.72 (7.18)	26.92 (6.73)	0.81	0.4	-1.51	3.14	-0.73	0.45	-3.07	1.61	-1.6		0.1	-3.96	0.76
RTW-SE [FU6]	25.94 (8.76)	23.55 (9.36)	25.11 (9.23)	1.58	0.17	-1.21	4.37	-0.71	0.55	-3.55	2.13	-2.21		0.05	-4.93	0.52
QoLs [FU6]	69.13(14.93)	67.39(16.35)	70.55(14.95)	2.66	0.18	-2.15	7.47	1.26	0.51	-3.35	5.88	-1.21		0.55	-6.08	3.66
EQ5 [FU6]	0.79 (0.16)	0.77 (0.15)	0.79 (0.13)	0.01	0.59	-0.04	0.06	0	0.99	-0.05	0.05	-0.01		0.64	-0.07	0.05
IS [FU6]	26.44 (4.52)	25.57 (5.04)	19.68 (6.6)	-4.42	**0	-6.69	-2.14	-5.15	**0	-7.3	-3.01	-0.82		0.29	-2.7	1.06
BAI [FU12]	11.29 (8.04)	11.8 (9.46)	12.04 (8.68)	0.78	0.38	-1.36	2.92	1.52	0.07	-0.52	3.55	0.79		0.34	-1.19	2.77
BDI [FU12]	10.3 (9.49)	14.01 (11.3)	12.01(10.78)	-0.58	0.54	-2.9	1.73	0.6	0.52	-1.61	2.8	1.24		0.19	-1	3.47
PSS [FU12]	15.9 (8.02)	17.2 (7.85)	16.68 (7.1)	0.51	0.47	-1.19	2.21	1.2	0.09	-0.5	2.89	0.7		0.33	-1.04	2.45
KES [FU12]	57.16(18.36)	62.93(20.09)	59.58(19.35)	-2.34	0.34	-8.19	3.52	2.17	0.35	-3.39	7.73	4.56		0.05	-1.08	10.19
DSQ-som. [FU12]	9.4 (6.41)	9.36 (6.4)	9.49 (6.22)	0.63	0.51	-1.67	2.94	0.65	0.49	-1.61	2.9	0.06		0.95	-2.16	2.29
DSQ-distr. [FU12]	12.38 (7.8)	14.85 (8.38)	13.5 (8.6)	-1.26	0.26	-3.93	1.4	0.66	0.53	-1.88	3.2	1.89		0.07	-0.65	4.42
DSQ-anx. [FU12]	3.39 (3.92)	4.45 (5.51)	3.72 (4.96)	-0.38	0.64	-2.33	1.56	0.51	0.49	-1.25	2.27	0.98		0.19	-0.82	2.77
DSQ-depr. [FU12]	1.49 (2.63)	2.26 (2.75)	2.31 (3.65)	-0.04	0.93	-1.12	1.04	0.45	0.32	-0.63	1.53	0.49		0.25	-0.53	1.51
WSAS [FU12]	11.73 (9.5)	13.96(11.19)	12.14(10.72)	-0.66	0.5	-3.01	1.68	0.59	0.53	-1.66	2.83	1.26		0.18	-0.99	3.51
SPS [FU12]	19.78 (2.76)	19.74 (3.51)	19.12 (4.48)	0.03	0.93	-0.9	0.97	-0.32	0.4	-1.21	0.58	-0.31		0.37	-1.15	0.53
IPQ [FU12]	17.49 (3.55)	16.64 (3.96)	16.29 (4.26)	-0.25	0.68	-1.67	1.18	-0.93	0.09	-2.27	0.4	-0.7		0.2	-2.01	0.61
GSS [FU12]	27.97 (6.62)	26.86 (7.94)	26.97 (7.47)	0.27	0.8	-2.25	2.78	-1.25	0.21	-3.67	1.16	-1.56		0.13	-4.06	0.94
RTW-SE [FU12]	27.96 (8.54)	25.56(10.29)	26.74 (9.26)	1.22	0.36	-2	4.44	-1.1	0.39	-4.15	1.95	-2.27		0.07	-5.27	0.73
QoLs [FU12]	72.04(16.13)	68.68(18.18)	71.54 (17.4)	2.66	0.24	-2.74	8.06	-0.19	0.93	-5.29	4.91	-2.67		0.23	-7.97	2.63
EQ5 [FU12]	0.8 (0.18)	0.76 (0.18)	0.8 (0.14)	0.02	0.28	-0.03	0.08	0	0.93	-0.05	0.06	-0.02		0.37	-0.08	0.04

Analyses regarding: >inttemp<

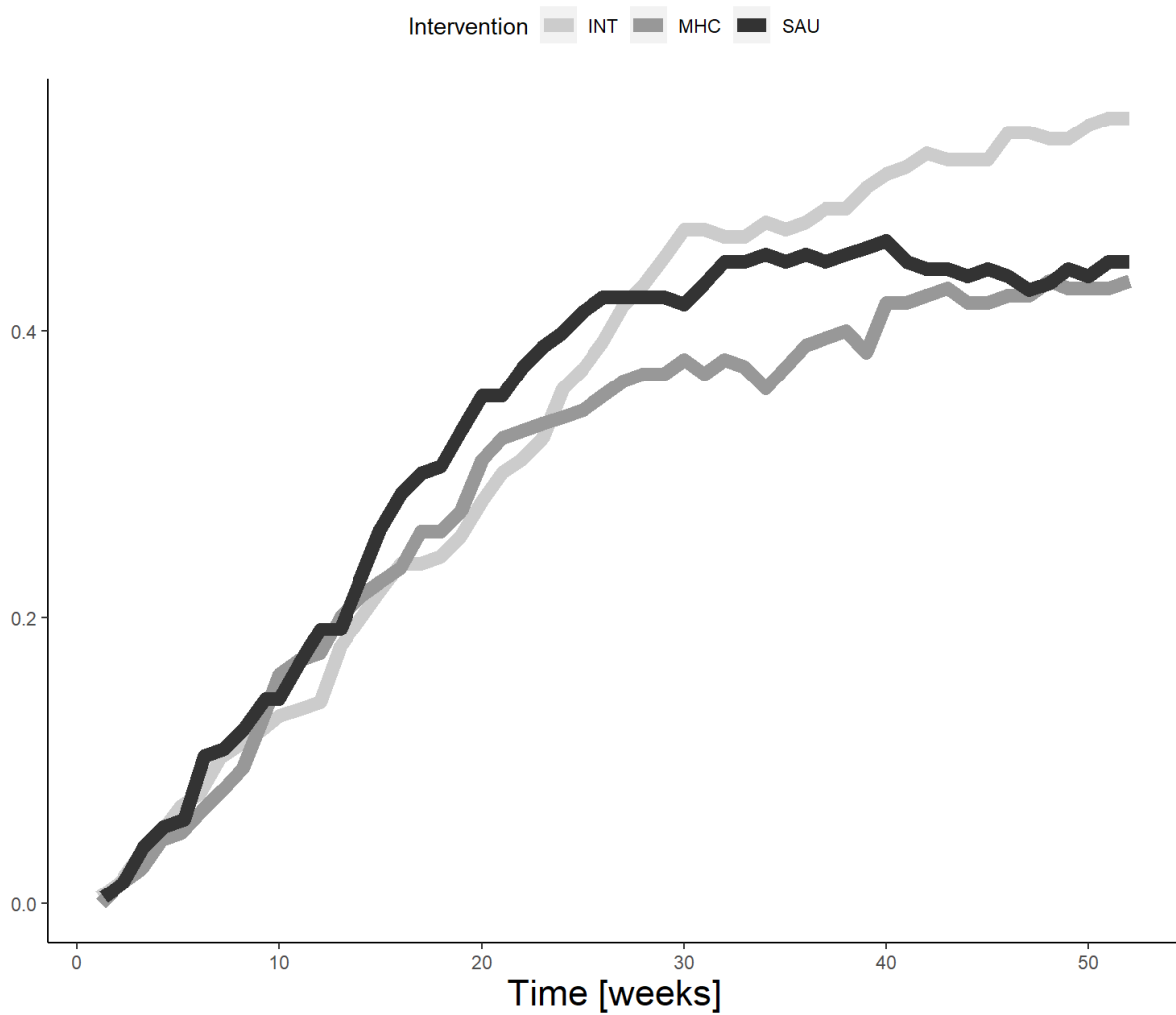
Kaplan Meier-curve at 12-month follow-up regarding: inttemp

Time to stable return-to-work



Proportion over time-curve at 12-month follow-up regarding: inttemp<

Proportion in stable work, per week



Vocational outcomes at 12-month follow-up from subgroup >inttemp< in RCT1

	Group values			SAU-MHC				SAU-INT				MHC-INT			
	INT	MHC	SAU	Est.	p	low CI	high CI	Est.	p	low CI	high CI	Est.	p	low CI	high CI
RTW, FU12 [weeks, HR]	30.0	37.0	31.0	1.00	0.98	0.64	1.57	0.83	0.29	0.54	1.27	0.81	0.23	0.53	1.23
RTW, FU12 [weeks, HR]:temp _{half} fast				1.29	0.33			1.33	0.25			1.03	0.89		
RTW, FU6 [HR]				1.12	0.61	0.66	1.88	1.10	0.66	0.66	1.82	0.97	0.88	0.58	1.63
RTW, FU6 [HR]:temp _{half} fast				1.34	0.33			1.23	0.49			0.93	0.82		
PROP, FU12 [% , OR]	56.2	43.7	45.0	0.89	0.68	0.43	1.81	0.32	**2e-04	0.15	0.66	0.37	**8e-04	0.18	0.75
PROP, FU12 [% , OR]:temp _{half} fast				0.38	0.37			1.36	**0.0013			0.96	*0.0235		
WEEKS, FU12 [weeks, RR]	18.3	15.8	17.6	0.93	0.60	0.67	1.30	0.82	0.15	0.60	1.14	0.89	0.38	0.65	1.22
WEEKS, FU12 [weeks, RR]:temp _{half} fast				0.35	0.08			0.32	0.09			-0.05	0.79		