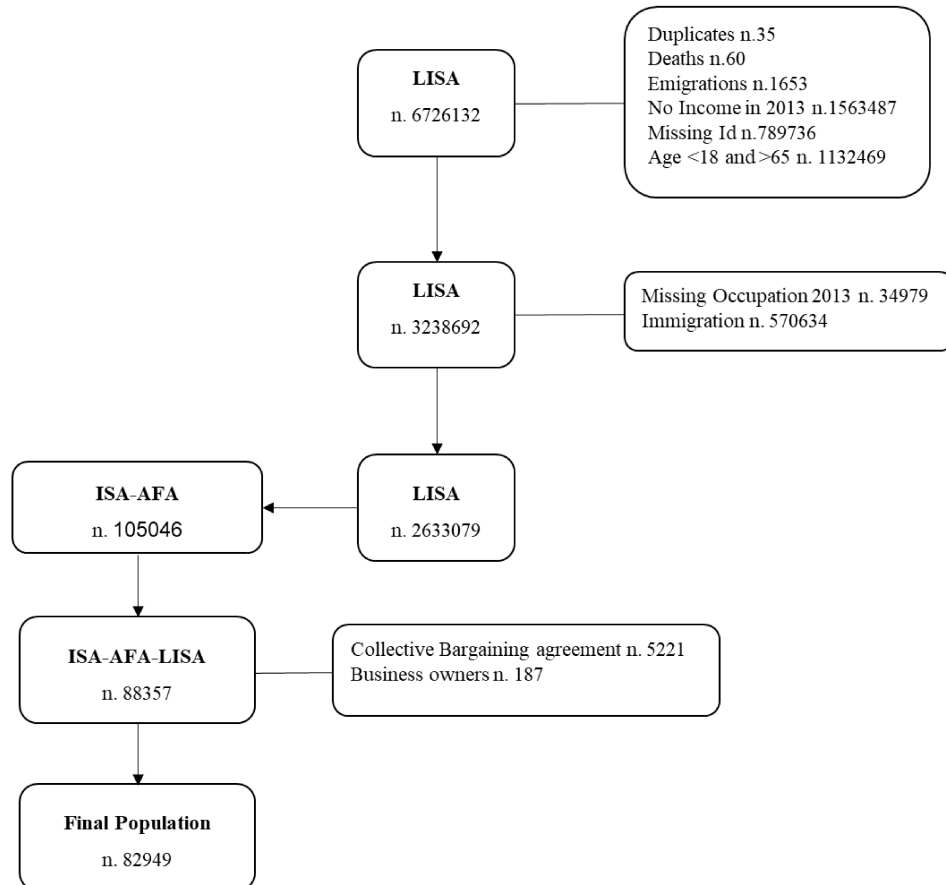


**Supplementary Material 1.** Flow chart total population included in the study in 2013.

**Supplementary material 2.** Capture–recapture estimates of under-reported non-fatal occupational injuries by socio-demographic factors in 2013 in Sweden.

	Total observed*	Under-report % (95% CI)
<b>Gender</b>		
<i>male</i>	41291	14.4 (14-14.7)
<i>female</i>	41658	17.8 (17.4-18.3)
<b>Age</b>		
<i>18-24</i>	6015	19.8 (18.6-21)
<i>25-34</i>	17066	16.5 (15.9-17.1)
<i>35-54</i>	41271	15.9 (15.5-16.3)
<i>55-65</i>	18597	15.5 (14.9-16)
<b>Country of birth</b>		
<i>Sweden</i>	68115	16.0 (15.7-16.3)
<i>Nordic countries</i>	2098	15.1 (13.5-16.8)
<i>EU-28</i>	5549	16.8 (15.8-17.8)
<i>Non EU-28</i>	6839	18.2 (17.2-19.2)
<b>Educational Level</b>		
<i>Primary school</i>	9669	14.7 (14-15.4)
<i>Secondary school</i>	50818	16.4 (16-16.7)
<i>Tertiary education &lt;3y</i>	10962	12.6 (12-13.3)
<i>Tertiary education ≥3y</i>	11300	20.9 (20-21.9)
<b>Family composition</b>		
<i>single</i>	28039	16.1 (15.6-16.5)
<i>single with children</i>	8316	18.1 (17.1-19.0)
<i>couple with children</i>	33937	16.3 (15.9-16.7)
<i>couple with no children</i>	12657	15.3 (14.6-15.9)
*Total observed is the total of those injuries reported to ISA only, AFA only and their overlap.		

**Supplementary Material 3.** Capture–recapture estimates of under-reported non-fatal occupational injuries by severity and employment relationship in 2013 in Sweden adjusted by sex, age and country of birth.

<b>Injury Severity</b>	<b>Total observed</b>	<b>Underreport % (95% CI)</b>	<b>Captured ISA % (95% CI)</b>	<b>Captured AFA % (95% CI)</b>
<b>Total</b>				
<i>no healthcare</i>	67441	18.0 (17.7-18.3)	70.3 (69.8-70.7)	39.3 (39.0-39.7)
<i>outpatient</i>	13448	9.04 (8.63-9.46)	71.5 (70.7-72.3)	68.4 (67.6-69.39)
<i>hospitalized</i>	1712	3.6 (2.97-4.24)	78.8 (76.8-80.8)	83.5 (81.5-85.4)
<b>Precarious</b>				
<i>no healthcare</i>	5001	25.4 (23.9-26.8)	62.1 (60.3-63.8)	33.0 (31.8-34.2)
<i>outpatient</i>	1135	12.9 (11.1-14.7)	66.7 (63.6-69.7)	61.6 (58.7-64.6)
<i>hospitalized</i>	115	7.75 (3.26-12.2)	67.5 (58.8-76.2)	77.2 (68.7-85.7)
<b>Borderline Precarious</b>				
<i>no healthcare</i>	18902	19.4 (18.7-20.0)	68.7 (67.9-69.6)	37.8 (37.2-38.5)
<i>outpatient</i>	3665	9.86 (9.03-10.7)	69.8 (68.2-71.4)	67.5 (65.9-69.1)
<i>hospitalized</i>	508	4.09 (2.82-5.37)	78.0 (74.3-81.8)	81.2 (77.5-84.9)
<b>Non-Precarious</b>				
<i>no healthcare</i>	43538	16.7 (16.3-17.1)	71.8 (71.3-72.4)	40.7 (40.2-41.2)
<i>outpatient</i>	8648	8.26 (7.76-8.75)	72.8 (71.7-73.9)	69.7 (68.7-70.8)
<i>hospitalized</i>	1089	2.96 (2.26-3.65)	80.4 (77.9-82.9)	85.2 (82.9-87.5)
AFA= AFA Insurance ISA= the Information System on occupational injuries.				

**Supplementary material 4.** Capture–recapture estimates of under-reported non-fatal occupational injuries by severity and employment relationship in 2013 in Sweden using company size cut-off of ≥50 employees as Orellana et al (2020).

	Total observed	Underreport % (95% CI)	Captured ISA % (95% CI)	Captured AFA % (95% CI)
<b>Total</b>				
<i>no healthcare</i>	62319	16.6 (16.3-17.0)	72.7 (72.3-73.2)	39.0 (38.6-39.3)
<i>outpatient</i>	10809	7.95 (7.54-8.35)	74.4 (73.5-75.3)	69.0 (68.1-69.9)
<i>hospitalized</i>	1236	3.56 (2.85-4.26)	80.0 (77.5-82.5)	82.2 (80.0-84.5)
<b>Precarious</b>				
<i>no healthcare</i>	4364	22.8 (21.3-24.2)	66 (64.2-67.8)	32.9 (31.6-34.2)
<i>outpatient</i>	843	11.2 (9.25-13.1)	70.1 (66.7-73.5)	62.7 (59.3-66.1)
<i>hospitalized</i>	69	8 (1.99-14)	66.7 (54.7-78.6)	76 (63.9-88.1)
<b>Borderline Precarious</b>				
<i>no healthcare</i>	17303	17.9 (17.2-18.6)	71.4 (70.5-72.3)	37.4 (36.7-38.1)
<i>outpatient</i>	2839	8.7 (7.85-9.54)	73 (71.2-74.7)	67.8 (66-69.6)
<i>hospitalized</i>	358	4.52 (2.97-6.07)	77.1 (72.3-81.9)	80.3 (75.9-84.6)
<b>Non-Precarious</b>				
<i>no healthcare</i>	40652	15.6 (15.2-16)	73.9 (73.3-74.5)	40.3 (39.8-40.8)
<i>outpatient</i>	7127	7.34 (6.87-7.82)	75.4 (74.3-76.5)	70.2 (69.1-71.3)
<i>hospitalized</i>	809	2.91 (2.16-3.66)	82.3 (79.585.2)	83.5 (80.7-86.3)
AFA= AFA Insurance ISA= the Information System on occupational injuries.				