

Supplemental Material

Livestock-associated methicillin-resistant *Staphylococcus aureus* (LA-MRSA) colonization and infection among livestock workers and veterinarians: a systematic review and meta-analysis

Chen Chen, Felicia Wu

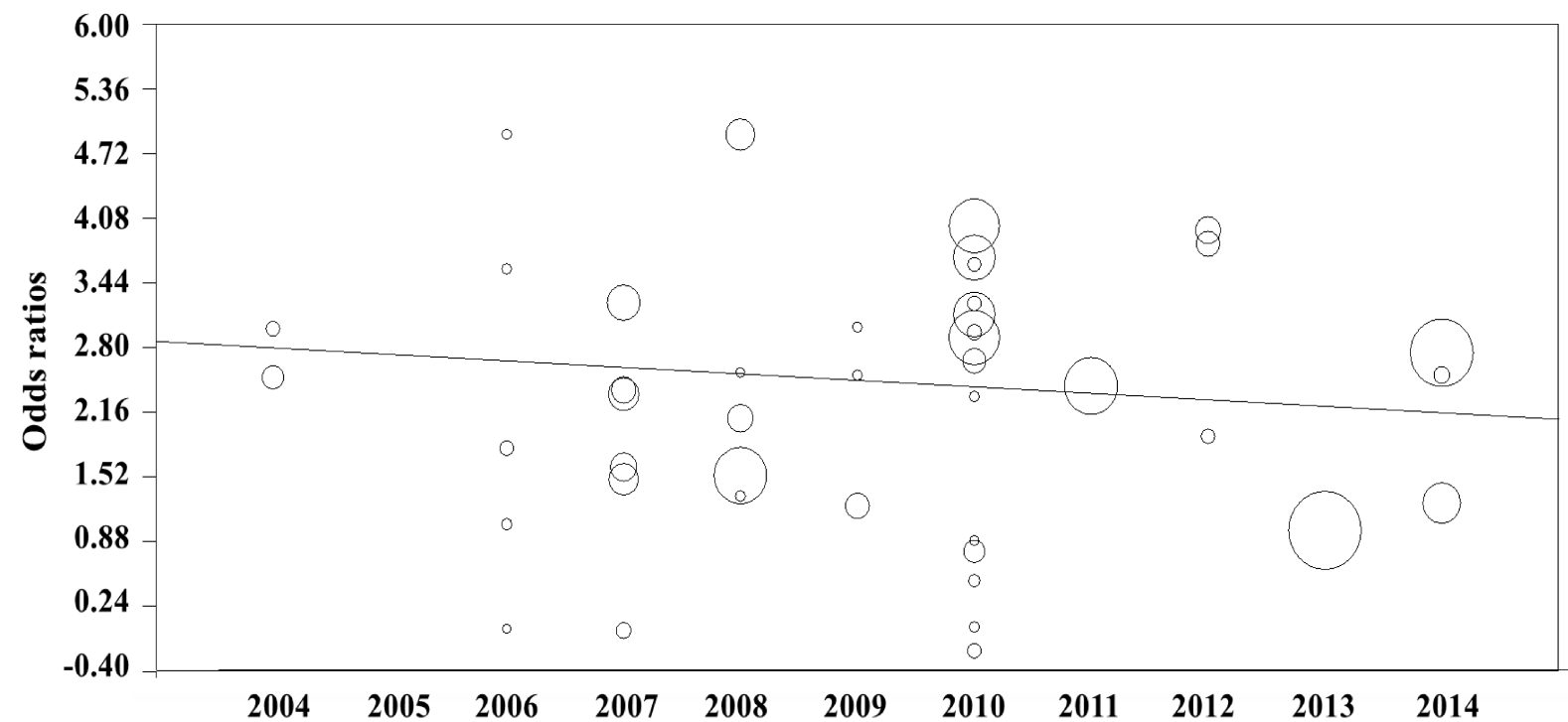
Table S1: Quality assessment of eligible studies.

Study	Selection				Comparability	Outcome			Score
	Representativeness of the exposed cohort	Selection of the non-exposed cohort	Ascertainment of exposure	Demonstration that outcome of interest was not present at start of study		Assessment of outcome	Follow-up long enough for outcomes to occur	Adequacy of follow-up of cohorts	
Angen et al (2017)	★	★	★	NA	NA	★	★	★	6
Bisdorff et al (2012)	★	★	★	NA	NA	★	★	NA	5
Bos et al (2016)	★	★	★	NA	NA	★	★	★	6
Cuny et al (2009)	★	★	★	NA	NA	★	★	NA	5
Denis et al (2009)	★	★	★	NA	NA	★	★	NA	5
Fang et al (2014)	★	★	★	NA	NA	★	★	NA	5
Geenen et al (2013)	★	★	★	NA	NA	★	★	NA	5
Gracia-Graells et al (2012)	★	★	★	NA	NA	★	★	NA	5
Gracia-Graells et al (2013)	★	★	★	NA	NA	★	★	★	6
Graveland et al 2010	★	★	★	NA	NA	★	★	NA	5
Hatcher et al (2017)	★	★	★	NA	NA	★	★	NA	5
Huber et al 2010	★	★	★	NA	NA	★	★	NA	5
Köck et al (2009)	★	★	★	NA	NA	★	★	NA	5
Lewis et al (2008)	★	★	★	NA	NA	★	★	NA	5
Moodley et al (2008)	★	★	★	NA	NA	★	★	NA	5
Mutters et al (2016)	★	★	★	NA	NA	★	★	NA	5
Nadimpalli et al (2016)	★	★	★	NA	NA	★	★	NA	5
Neyra et al (2014)	★	★	★	NA	NA	★	★	NA	5
Oppliger et al (2012)	★	★	★	NA	NA	★	★	NA	5
Pletinckx et al (2013)	★	★	★	NA	NA	★	★	NA	5

Richter et al (2012)	★	★	★	NA	NA	★	★	NA	5
Rinsky et al (2013)	★	★	★	NA	NA	★	★	NA	5
Sahibzada et al. (2018)	★	★	★	NA	NA	★	★	NA	5
Schmithausen et al (2015)	★	★	★	NA	NA	★	★	NA	5
van Cleef et al (2010)	★	★	★	NA	NA	★	★	NA	5
van Cleef et al (2014; 2015)	★	★	★	NA	NA	★	★	★	6
Vandendriessche et al (2013)	★	★	★	NA	NA	★	★	NA	5
van den Broek et al (2009)	★	★	★	NA	NA	★	★	NA	5
van Duijkeren et al (2016)	★	★	★	NA	NA	★	★	NA	5
van Loo et al (2007)	★	★	★	NA	NA	★	★	NA	5
Verkade et al (2014)	★	★	★	NA	NA	★	★	★	6
Walter et al (2016; 2017)	★	★	★	NA	NA	★	★	★	6
Wang et al (2017)	★	★	★	NA	NA	★	★	NA	5
Wulf et al (2008)	★	★	★	NA	NA	★	★	NA	5
Ye et al (2015)	★	★	★	NA	NA	★	★	NA	5

NA=not applicable.

*The Newcastle-Ottawa Scale (NOS) consists of three parameters to evaluate the quality of individual studies: selection (four stars), for comparability (two stars) and exposure/outcome (three stars).

Figure S1. Meta regression analysis of index year of odds ratio for eligible studies in Europe.

Circles represent the OR and size of circles is proportional to the precision of each study. The fitted regression line is depicted by the index year of the study. We used the index year that the study was conducted rather than the year of publication. If the study extended beyond one calendar year, the year that the sampling took place was assumed to be the index year. For studies that did not report the time frame, we assumed that the study period was two years before the publication year.

Figure S2. Funnel plot to assess publication bias for the association between livestock exposure and LA-MRSA carriage.

