

Personal Exposure to Static and Time-varying magnetic fields during MRI procedures in clinical practice in the United Kingdom

Evridiki Batistatou¹ (PhD), Anna Mölter (PhD)², Hans Kromhout (PhD)³, Martie van Tongeren (PhD)⁴, Stuart Crozier (PhD)⁵, Kristel Schaap (PhD)³, Penny Gowland (PhD)⁶, Stephen F Keevil (PhD)^{7,8}, Frank de Vocht (PhD)⁹

¹Centre for Occupational and Environmental Health, University of Manchester, Manchester, UK.

²Department of Environmental and Radiological Health Sciences, Colorado State University, Fort Collins, USA

³Institute for Risk Assessment Sciences (IRAS), Utrecht University, Utrecht, The Netherlands

⁴Centre for Human Exposure Science, Institute of Occupational Medicine, Edinburgh, UK

⁵School of Information Technology and Electrical Engineering, University of Queensland, Brisbane, Australia.

⁶School of Physics and Astronomy, The University of Nottingham, Nottingham, UK

⁷Department of Medical Physics, Guy's and St Thomas' NHS Foundation Trust, London, United Kingdom.

⁸Department of Biomedical Engineering, King's College London, London, United Kingdom.

⁹School of Social and Community Medicine, University of Bristol, Bristol, UK.

Online Supplementary Material

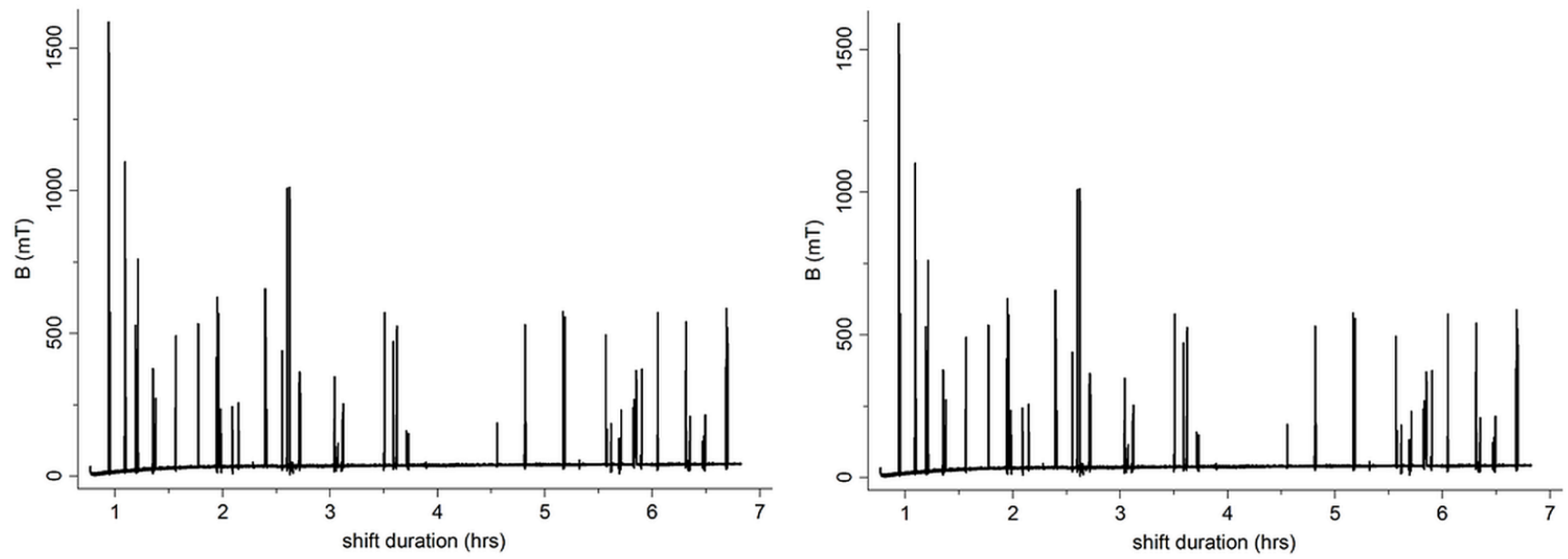


Figure 1. Example of static field ($|B|$) exposure pattern of two randomly selected radiographers; both working with 1.5 T scanners.

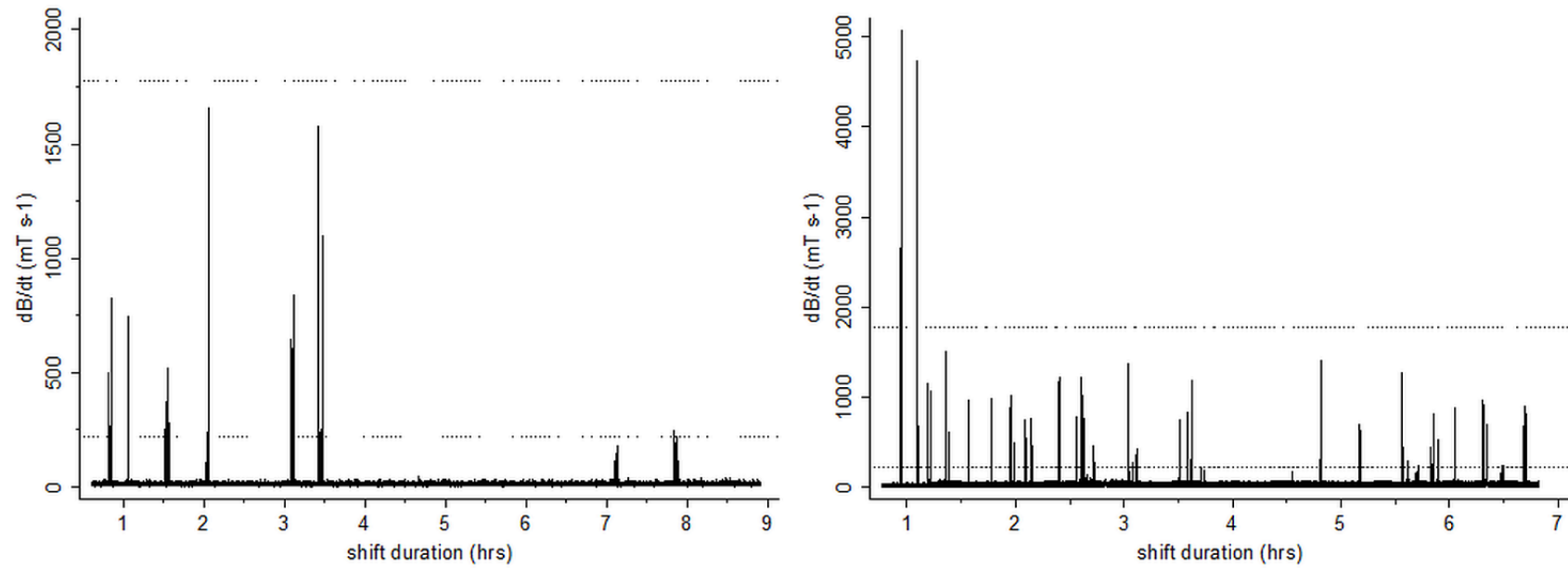


Figure 2. Example of motion-induced time-varying magnetic fields ($|dB/dt|$) exposure pattern of two randomly selected radiographers; both working with 1.5 T scanners. Dotted lines refer to the 222.5 $mT s^{-1}$ and 1,780 $mT s^{-1}$ thresholds.