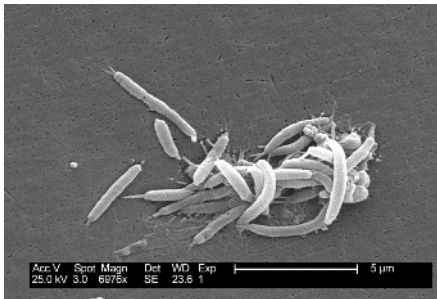


# Work in Brief

Dana Loomis, deputy editor

## Infection risks among sewage workers

The treatment of sewage is an important public health measure, but some recent research suggests that workers exposed to sewage may be at increased risk for occupationally-acquired infection, notably with hepatitis viruses and *Helicobacter pylori*, a cause of peptic ulcer and stomach cancer. Tschopp *et al*<sup>1</sup> address this concern with findings from a follow-up of Zurich municipal workers with and without exposure to sewage who participated in a previous cross-sectional study.<sup>2</sup> The authors found no difference between exposed and unexposed workers in rates of seroconversion for Hepatitis E virus or *H pylori*, or in the incidence of clinical endpoints associated with *H pylori*. The findings are reassuring, but the authors caution that they might not apply in areas of endemic infection.



## Chromosome aberrations and flying

Cosmic radiation is the major source of population exposure to ionizing radiation and is particularly important for aviation flight crews, who some studies suggest have increased risks for some cancers. In this issue, Yong *et al*<sup>3</sup> report on a study of chromosome translocations among airline pilots and non-flying referent subjects. The overall frequency of translocations was similar for pilots and the comparison group. Among pilots only, however, the frequency of translocations increased about 6% for each year of flying experience. When

pilots with over 23 years of flying experience were compared to pilots with 13 or fewer years experience, the adjusted translocation rate ratio was approximately 2.6. The authors interpret their results as an indication that pilots may receive biologically-significant ionizing radiation doses over the course of a career.



## Do sick leave benefits predict time away from work?

One of the more controversial questions about sickness absence has been whether more generous benefits lead to more frequent or longer sick leaves. Benavides *et al*<sup>4</sup> studied this question using data from the Spanish social security system, which provides higher benefit levels for sick leave classified as work-related than for non-work related leave. The authors hypothesized that higher benefits would



be associated with longer time off work, but this hypothesis was supported only for episodes shorter than 16 days, and then the effect was modest. With longer leave periods, workers receiving more generous benefits returned to work in about half the time. Data on diagnoses were not available, but the authors suggest that the length of absence might vary with illness severity.

## Elsewhere in the Journal

This month's journal also includes comments on the future approaches to work and to occupational medicine<sup>5,6</sup> and a review on mortality among pesticide manufacturing workers.<sup>7</sup>



## REFERENCES

1. Tschopp A, Joller H, Jeggli S, *et al*. Hepatitis E, *Helicobacter pylori*, and peptic ulcers in workers exposed to sewage: a prospective cohort study. *Occup Environ Med* 2009;**66**:45–50.
2. S Jeggli, D Steiner, H Joller, *et al*. *Helicobacter pylori*, and gastrointestinal symptoms in workers exposed to waste water. *Occup Environ Med* 2004;**61**:622–7.
3. Yong LC, Sigurdson AJ, Ward EM, *et al*. Increased frequency of chromosome translocations in airline pilots with long-term flying experience. *Occup Environ Med* 2009;**66**:56–62.
4. Benavides FG, Serra C, Domínguez R, *et al*. Does return to work occur earlier after work-related sick leave episodes than after non-work-related sick leave episodes? A retrospective cohort study in Spain. *Occup Environ Med* 2009;**66**:63–67.
5. Hulshof CTJ. Working for a healthier tomorrow. *Occup Environ Med* 2009;**66**:1–2.
6. Albin M, Broberg K, Jakobsson K. Research challenges in occupational and environmental medicine until 2030. *Occup Environ Med* 2009;**66**:3–5.
7. Jones DR, Sutton A, Abrams K, *et al*. Systematic review and meta-analysis of mortality in crop protection product manufacturing workers. *Occup Environ Med* 2009;**66**:7–15.



## Work in Brief

*Occup Environ Med* 2009 66: i

---

Updated information and services can be found at:

<http://oem.bmj.com/content/66/1/i.full.html>

---

*These include:*

**References**

This article cites 7 articles, 7 of which can be accessed free at:

<http://oem.bmj.com/content/66/1/i.full.html#ref-list-1>

**Email alerting  
service**

Receive free email alerts when new articles cite this article. Sign up in the box at the top right corner of the online article.

---

**Notes**

---

To request permissions go to:

<http://group.bmj.com/group/rights-licensing/permissions>

To order reprints go to:

<http://journals.bmj.com/cgi/reprintform>

To subscribe to BMJ go to:

<http://group.bmj.com/subscribe/>